

FORT EUSTIS, VIRGINIA

COPTER RNAV (GPS) RWY 14

| | | |
|----------|------------|------|
| APCH CRS | Rwy Idg | 3025 |
| 139° | TDZE | 12 |
| | Arprt Elev | 12 |

[USA]

FELKER AAF (KFAP)

RNP APCH - GPS

ODALS



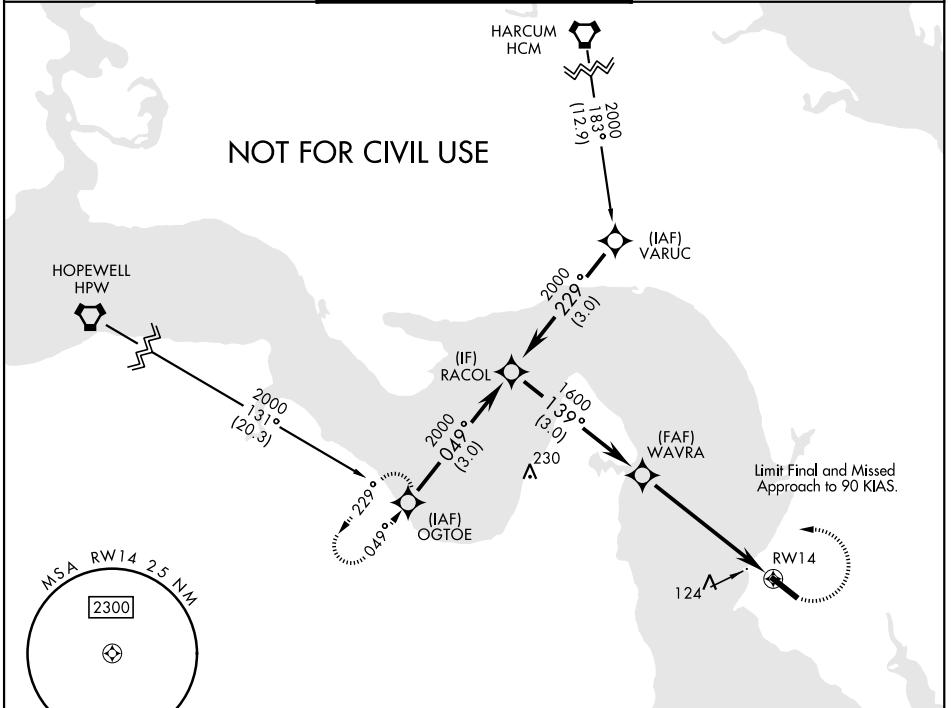
MISSED APPROACH: Climbing left turn to 2000 direct OGTOE and hold.

When local altimeter setting not received, use Newport News/Williamsburg Intl altimeter setting.
 VDP NA when using Newport News/Williamsburg Intl altimeter setting.
 Procedure NA at night.

NORFOLK APP CON
125.7 335.625

FELKER TOWER ★
126.3 (CTAF) 0 269.25

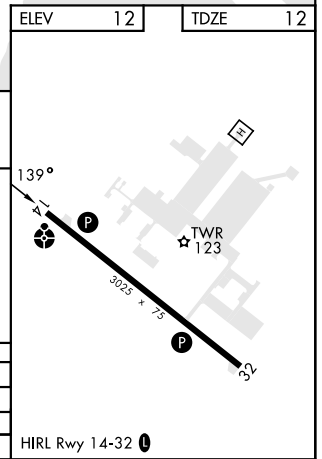
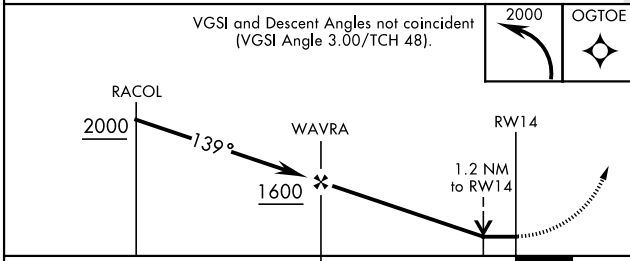
GND CON
121.35 229.4



NE-3, 11 JUL 2024 to 08 AUG 2024

NE-3, 11 JUL 2024 to 08 AUG 2024

| | | | |
|------|----|------|----|
| ELEV | 12 | TDZE | 12 |
|------|----|------|----|



| | | | |
|--|--------|-----|---------|
| CATEGORY | COPTER | | |
| LNAV MDA | 420-¾ | 409 | (500-¾) |
| NEWPORT NEWS / WILLIAMSBURG INTL ALTIMETER | | | |
| LNAV MDA | 440-¾ | 429 | (500-¾) |

HIRL Rwy 14-32

FORT EUSTIS, VIRGINIA

37°08'N-76°37'W

FELKER AAF (KFAP)

Amdt 1 30NOV23

COPTER RNAV (GPS) RWY 14