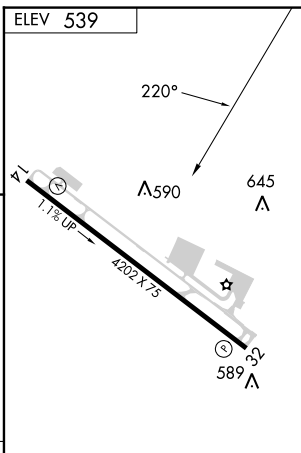
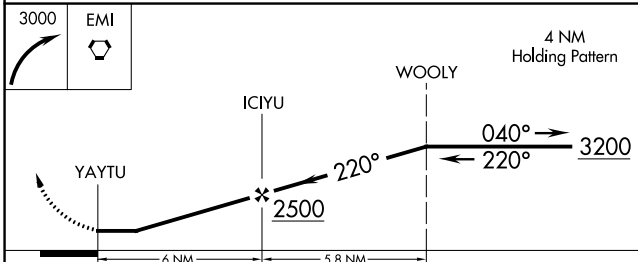
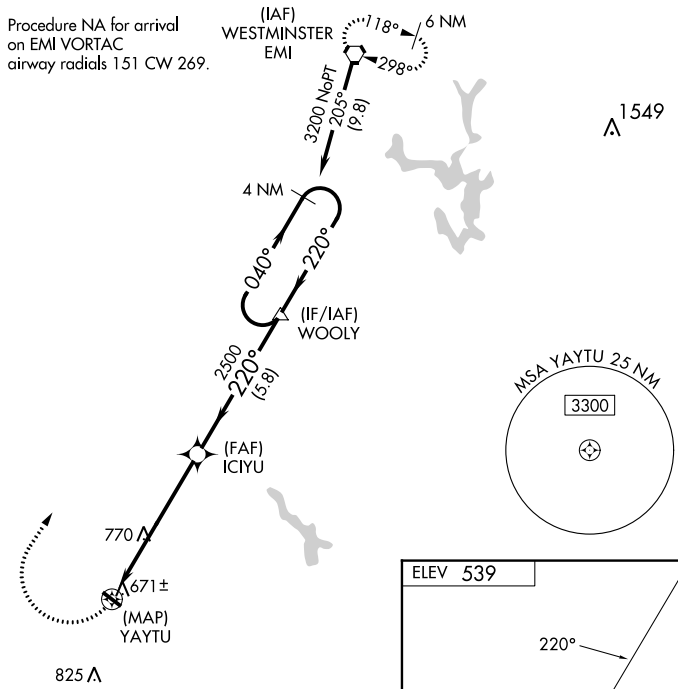


APP CRS 220°	Rwy Idg TDZE Apt Elev	N/A N/A 539
------------------------	-----------------------------	--

RNAV (GPS)-A

MONTGOMERY COUNTY AIRPARK (GAI)

RNP APCH.		MISSED APPROACH: Climbing right turn to 3000 direct EMI VORTAC and hold.	
AWOS-3PT 128.275	POTOMAC APP CON 128.7 307.9	CLNC DEL 121.6	UNICOM 123.075 (CTAF) 0



CATEGORY	A	B	C	D
CIRCLING	1080-1	541 (600-1)	1180-1 $\frac{1}{4}$ 641 (700-1 $\frac{1}{4}$)	1180-2 641 (700-2)

REIL Rwy 14 and 32 0
MRL Rwy 14-32 0

NE-3, 11 JUL 2024 to 08 AUG 2024

NE-3, 11 JUL 2024 to 08 AUG 2024