

WAAS CH <b>70526</b> <b>W05A</b>	APP CRS <b>054°</b>	Rwy Idg <b>5502</b> TDZE <b>455</b> Apt Elev <b>459</b>
--	------------------------	---

# RNAV (GPS) RWY 5

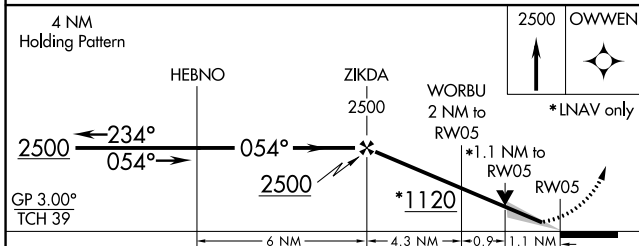
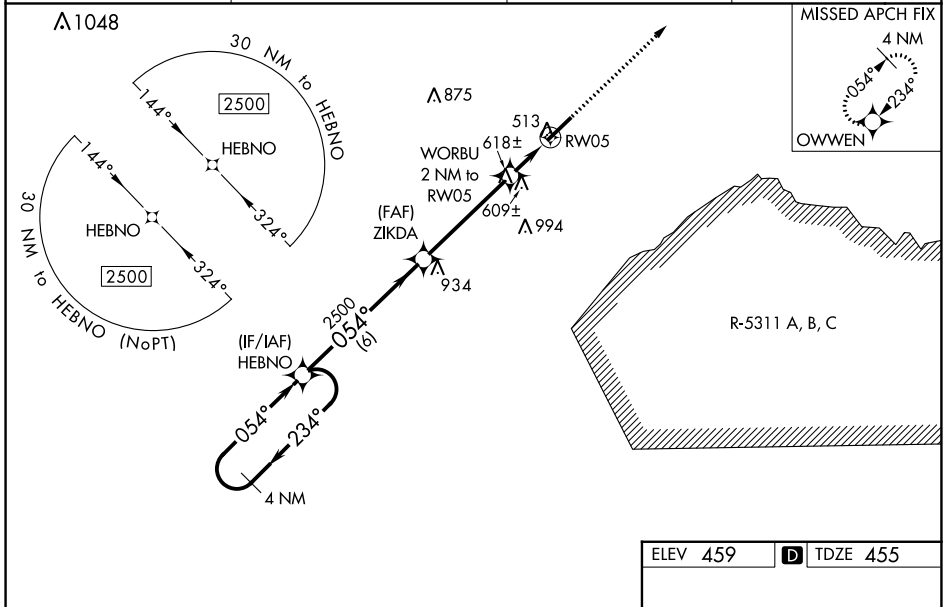
MOORE COUNTY (SOP)

**⚠** For uncompensated Baro-VNAV systems, LNAV/VNAV NA below -15°C (5°F) or above 54°C (130°F). DME/DME RNP-0.3 NA. For inop MALSR, increase LNAV/VNAV all Cats visibility to 7/8 mile, LNAV Cats A/B visibility to 1 mile and LNAV Cats C/D visibility to 1 1/8 mile. When local altimeter setting not received, use Sanford altimeter setting and increase all DA 88 feet and all MDA 100 feet, increase LNAV/VNAV all Cats visibility 1/8 mile, LNAV Cats C/D visibility 1/4 mile, and Circling Cat C 1/2 mile. When using Sanford altimeter setting, for inop MALSR increase LNAV/VNAV all Cats visibility to 1 1/8 mile, LNAV Cats A/B visibility to 1 mile, and LNAV Cat C/D visibility to 1 3/8 mile. Baro-VNAV and VDP NA when using Sanford altimeter setting.

**MALSR**

**MISSED APPROACH:**  
Climb to 2500 direct OWWEN and hold.

AWOS-3PT <b>127.575</b>	FAYETTEVILLE APP CON <b>127.8 343.725</b>	CLNC DEL <b>127.0</b>	UNICOM <b>123.05 (CTAF) 0</b>
----------------------------	--	--------------------------	----------------------------------



ELEV 459 **D** TDZE 455

514

6503 X 150

0.4% UP 0.23°

054° to RWY 5

REIL Rwy 23 **0**

HIRL Rwy 5-23 **0**

CATEGORY	A	B	C	D
LPV DA	655-1/2		200 (200-1/2)	
LNAV/VNAV DA	750-1/2		295 (300-1/2)	
LNAV MDA	860-1/2		860-3/4	
<b>C</b> CIRCLING	880-1 421 (500-1)	920-1 461 (500-1)	1100-1 1/4 641 (700-1 3/4)	1360-3 901 (1000-3)

SE-2, 11 JUL 2024 to 08 AUG 2024

SE-2, 11 JUL 2024 to 08 AUG 2024