

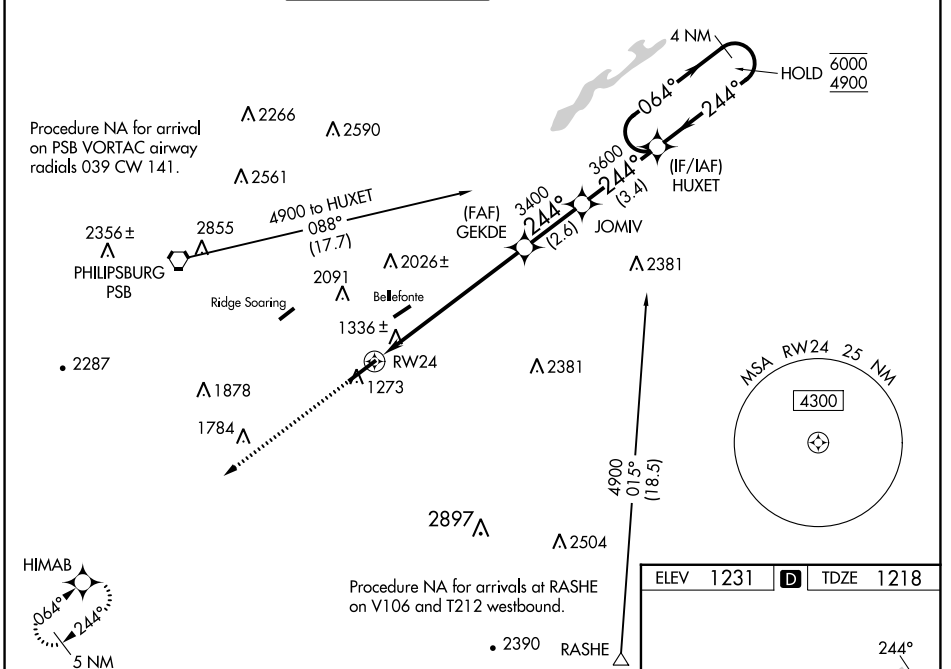



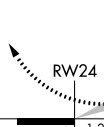
| | | | |
|--|------------------------|-----------------------------|---|
| WAAS CH 61309 W24A | APP CRS 244° | Rwy Idg TDZE Apt Elev | 6701 1218 1231 |
|--|------------------------|-----------------------------|---|

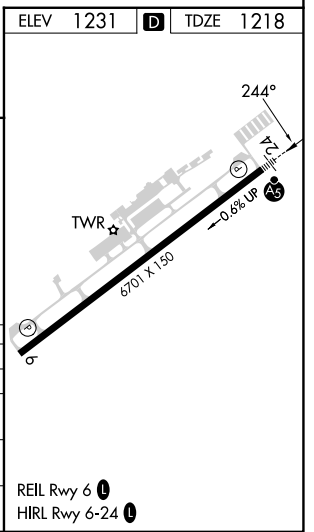
RNAV (GPS) RWY 24

STATE COLLEGE RGNL (UNV)

| | | | | | | | |
|-------------------------|---------------------------------------|---|---------------------------|--|--|--|--|
| RNP APCH - GPS. | | <p>⚠ Circling NA northwest of Rwy 6-24. For uncompensated Baro-VNAV systems, LNAV/VNAV NA below -17°C or above 54° C. For inop ALS, increase LNAV/VNAV all Cats visibility to RVR 6000.</p> <p>* RVR 1800 authorized with use of FD or AP or HUD to DA (NA when using Clearfield altimeter setting)</p> | | <p>MALSR</p>  | | <p>MISSED APPROACH: Climb to 4400 direct HIMAB and hold, continue climb-in-hold to 4400.</p> | |
| D-ATIS 127.65 | NEW YORK CENTER 134.8 338.3 | UNIVERSITY PARK ★ 128.475 (CTAF)  | GND CON 125.725 | CLNC DEL 125.725 | CLNC DEL 118.55 (When hwr closed) | UNICOM 122.95 | |



| | | | |
|--|---|----------------------------|---|
| 4400 | HIMAB | HUXET 4 NM Holding Pattern | |
| ↑ |  | GEKDE 3400 | JOMIV 3600 |
|  | 1.2 NM to RW24 | 3400 | 3600 |
| | 1.2 NM | 5.5 NM | 2.6 NM |
| | | 3.4 NM | |
| CATEGORY | A | B | C |
| LPV DA* | | 1418/24 | 200 (200-½) |
| LNAV/VNAV DA | | 1619/40 | 401 (400-¾) |
| LNAV MDA | 1640/24 | 422 (500-½) | 1640/40 422 (500-¾) |
| CIRCLING | 1640-1 409 (500-1) | 1700-1 469 (500-1) | 1940-2 709 (800-2) 2560-3 1329 (1400-3) |



NE-4, 11 JUL 2024 to 08 AUG 2024

NE-4, 11 JUL 2024 to 08 AUG 2024