

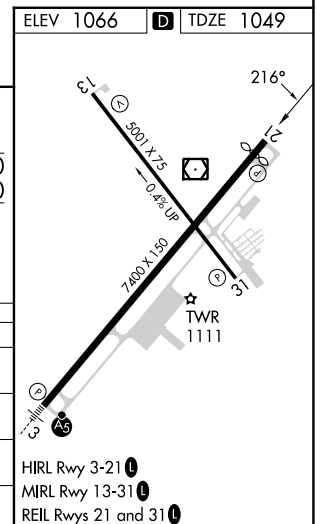
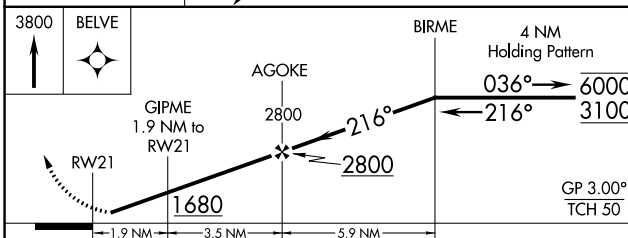
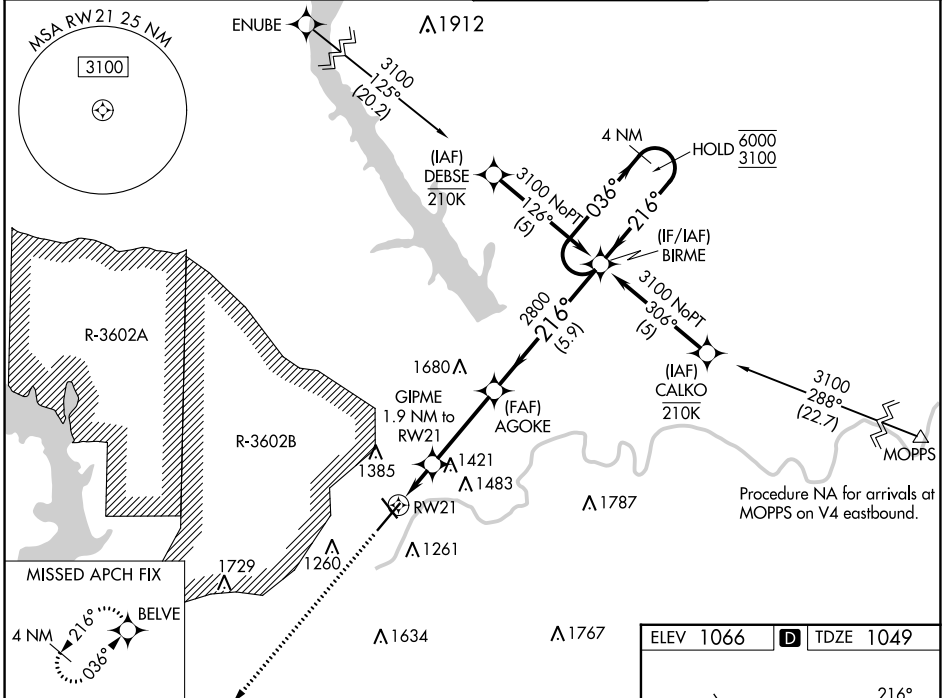
WAAS CH <b>53319</b> <b>W21A</b>	APP CRS <b>216°</b>	Rwy Idg TDZE Apt Elev	<b>7030</b> <b>1049</b> <b>1066</b>
--	------------------------	-----------------------------	---

# RNAV (GPS) RWY 21

MANHATTAN RGNL (MHK)

RNP APCH - GPS.	MISSED APPROACH: Climb to 3800 direct BELVE and hold.
<p><b>⚠</b> Circling NA northwest of Rwy 3-21. Rwy 21 helicopter visibility reduction below <math>\frac{3}{4}</math> SM NA. For uncompensated Baro-VNAV systems, LNAV/VNAV NA below -20°C or above 54°C.</p>	

ASOS <b>119.075</b>	MARSHALL AAF GCA* <b>121.25 254.35</b>	MANHATTAN TOWER* <b>118.55 (CTAF) 0</b>	GND CON <b>121.85</b>
------------------------	---	--	--------------------------



CATEGORY	A	B	C	D
LPV DA	1249- $\frac{3}{4}$ 200 (200- $\frac{3}{4}$ )			
LNAV/VNAV DA	1634-1 $\frac{3}{4}$ 585 (600-1 $\frac{3}{4}$ )			
LNAV MDA	1660-1 611 (600-1)	1660-1 $\frac{3}{4}$ 611 (600-1 $\frac{3}{4}$ )		
CIRCLING	1660-1 594 (600-1)	1920-2 $\frac{1}{2}$ 854 (900-2 $\frac{1}{2}$ )	1920-2 $\frac{3}{4}$ 854 (900-2 $\frac{3}{4}$ )	

NC-2, 11 JUL 2024 to 08 AUG 2024

NC-2, 11 JUL 2024 to 08 AUG 2024