

CODY, WYOMING

AL-5243 (FAA)

23278

VOR/DME COD <b>111.8</b> Chan <b>55</b>	APP CRS <b>191°</b>	Rwy Idg TDZE Apt Elev <b>N/A</b> <b>N/A</b> <b>5102</b>
---	------------------------	--

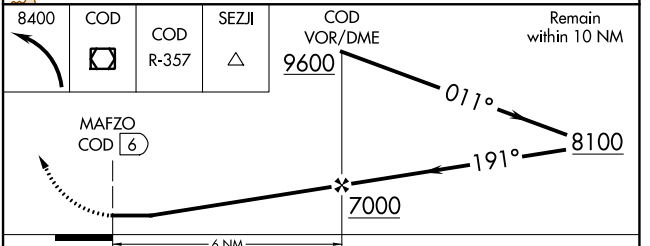
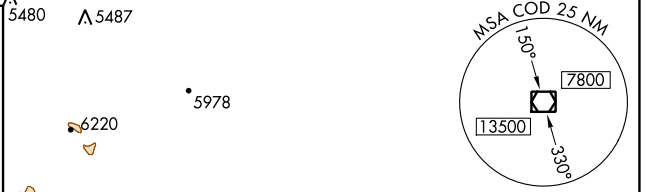
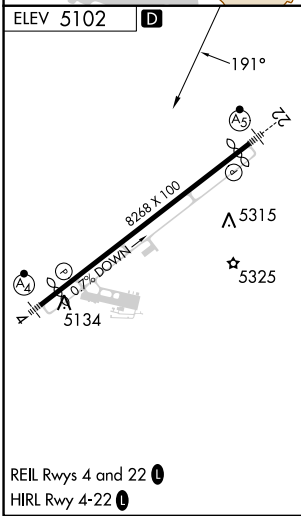
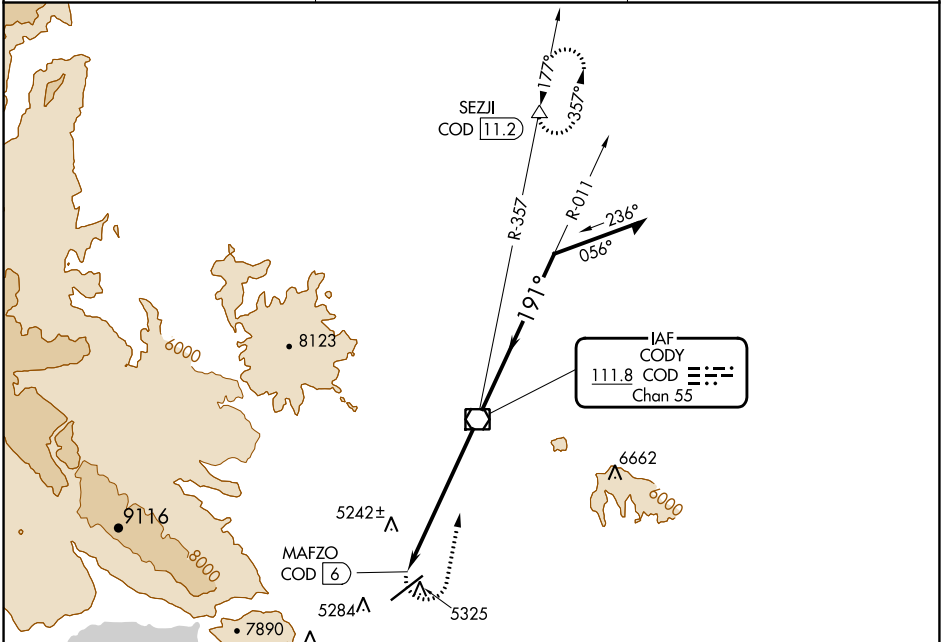
# VOR-A

YELLOWSTONE RGNL (COD)

DME required.

MISSED APPROACH: Climbing left turn to 8400 direct COD VOR/DME and on COD VOR/DME R-357 to SEZJI/COD 11.2 DME and hold.

AWOS-3PT <b>135.075</b>	SALT LAKE CENTER <b>127.75 351.9</b>	UNICOM <b>122.8 (CTAF)</b>
----------------------------	---	-------------------------------



CATEGORY	A	B	C	D
<b>CIRCLING</b>	5780-1 678 (700-1)	5920-1¼ 818 (900-1¼)	5940-2½ 838 (900-2½)	6940-3 1838 (1900-3)

CODY, WYOMING  
Amdt 9 26MAR20

44°31'N-109°01'W

# VOR-A

YELLOWSTONE RGNL (COD)

NW-1, 11 JUL 2024 to 08 AUG 2024

NW-1, 11 JUL 2024 to 08 AUG 2024