

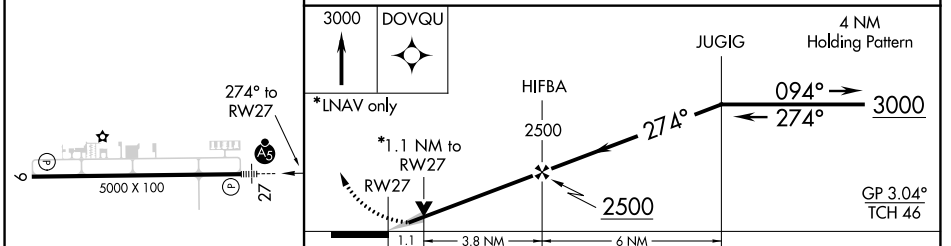
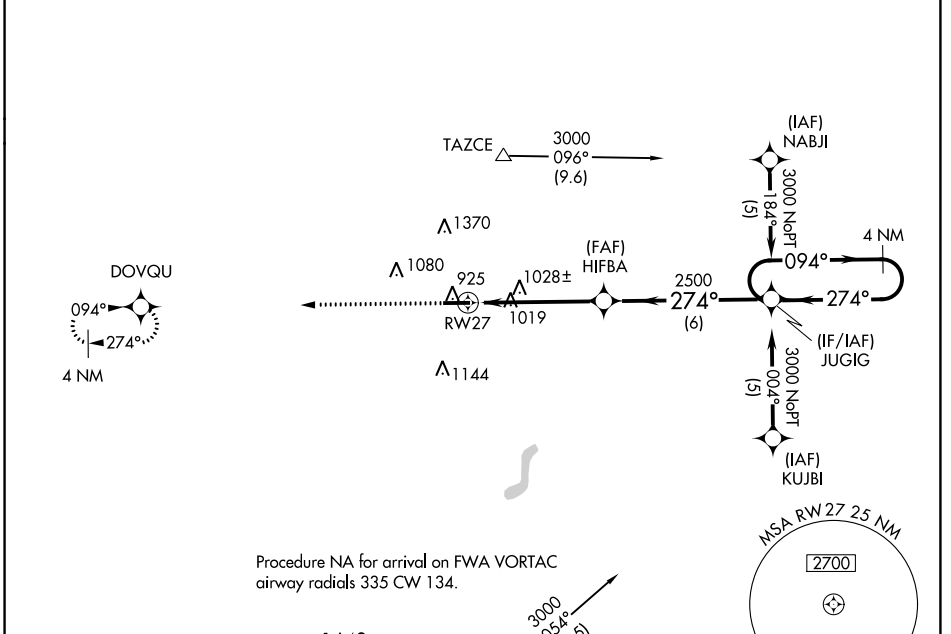
WAAS CH <b>86401</b> <b>W27A</b>	APP CRS <b>274°</b>	Rwy Idg <b>5000</b> TDZE <b>880</b> Apt Elev <b>880</b>
----------------------------------------	------------------------	---------------------------------------------------------------

# RNAV (GPS) RWY 27

DE KALB COUNTY (GWB)

For uncompensated Baro-VNAV systems, LNAV/VNAV NA below -16°C (4°F) or above 54°C (130°F). DME/DME RNP-0.3 NA.	MALSR 	MISSED APPROACH: Climb to 3000 direct DOVQU and hold.
	UNICOM <b>123.0 (CTAF)</b>	

AWOS-3 <b>124.15</b>	FORT WAYNE APP CON <b>127.2 284.6</b>	CLNC DEL <b>126.6</b>	UNICOM <b>123.0 (CTAF)</b>
-------------------------	------------------------------------------	--------------------------	-------------------------------



CATEGORY	A	B	C	D
LPV DA	1130-½ 250 (300-½)			
LNAV/VNAV DA	1207-⅝ 327 (400-⅝)			
LNAV MDA	1280-½ 400 (400-½)	1280-¾ 400 (400-¾)		
CIRCLING	1320-1 440 (500-1)	1560-1 680 (700-1)	1720-2½ 840 (900-2½)	1720-2¾ 840 (900-2¾)

AUBURN, INDIANA  
Orig-D 27APR17

41°18'N-85°04'W

# RNAV (GPS) RWY 27

EC-2, 11 JUL 2024 to 08 AUG 2024

EC-2, 11 JUL 2024 to 08 AUG 2024