

WAAS CH 40201 W09A	APP CRS 094°	Rwy Idg 5000 TDZE 880 Apt Elev 880
--	------------------------	---

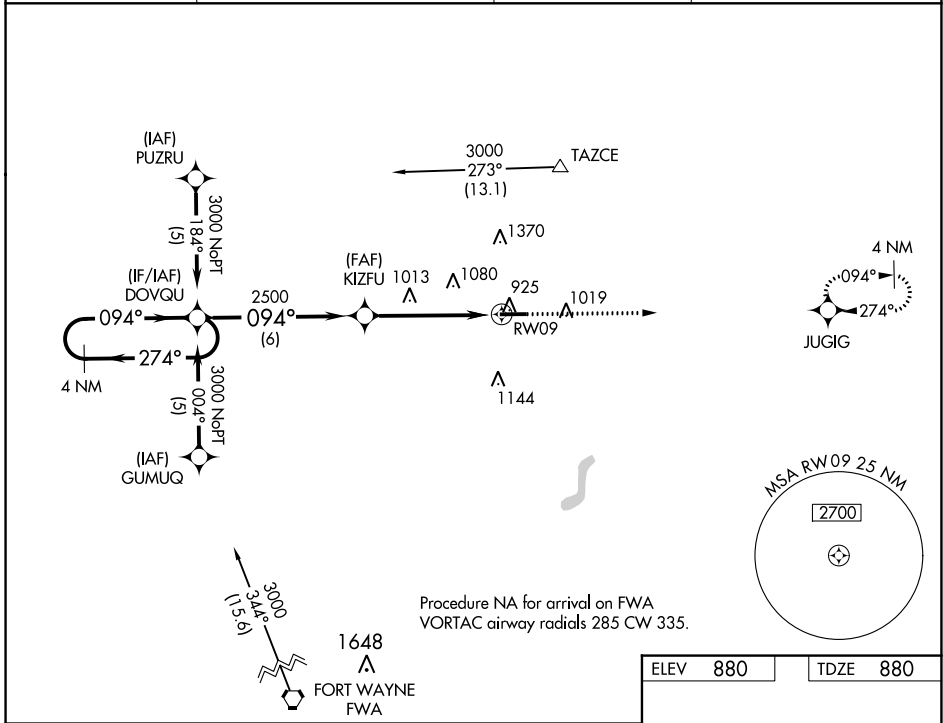
RNAV (GPS) RWY 9

DE KALB COUNTY (GWB)

▼ For uncompensated Baro-VNAV systems, LNAV/VNAV NA below -16°C (4°F) or above 54°C (130°F). DME/DME RNP-0.3 NA.

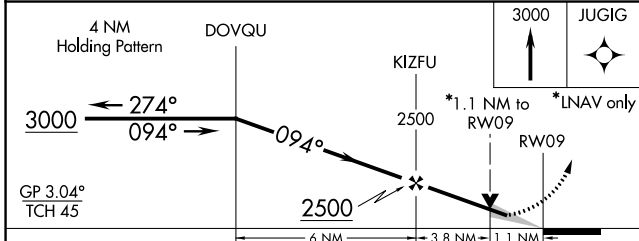
▲ MISSED APPROACH: Climb to 3000 direct JUGIG and hold.

AWOS-3 124.15	FORT WAYNE APP CON 127.2 284.6	CLNC DEL 126.6	UNICOM 123.0 (CTAF) 0
-------------------------	--	--------------------------	---------------------------------

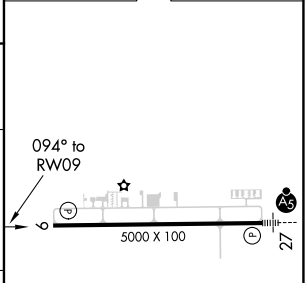


EC-2, 11 JUL 2024 to 08 AUG 2024

EC-2, 11 JUL 2024 to 08 AUG 2024



ELEV 880	TDZE 880
----------	----------



CATEGORY	A	B	C	D
LPV DA	1182-1		302 (400-1)	
LNAV/VNAV DA	1237-1¼		357 (400-1¼)	
LNAV MDA	1280-1	400 (400-1)	1280-1½ 400 (400-1½)	1280-1¼ 400 (400-1¼)
C CIRCLING	1320-1 440 (500-1)	1560-1 680 (700-1)	1720-2½ 840 (900-2½)	1720-2¾ 840 (900-2¾)

REIL Rwy 9 and 27 **0**
MIRL Rwy 9-27 **0**