

VOR/DME MUE <b>113.3</b> Chan <b>80</b>	APP CRS <b>237°</b>	Rwy Idg TDZE Apt Elev <b>N/A</b> <b>N/A</b> <b>2671</b>
---	------------------------	--

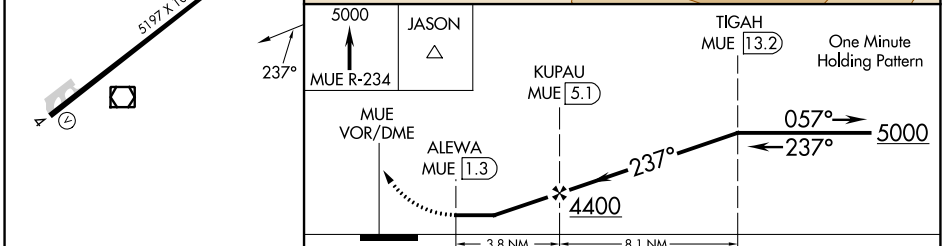
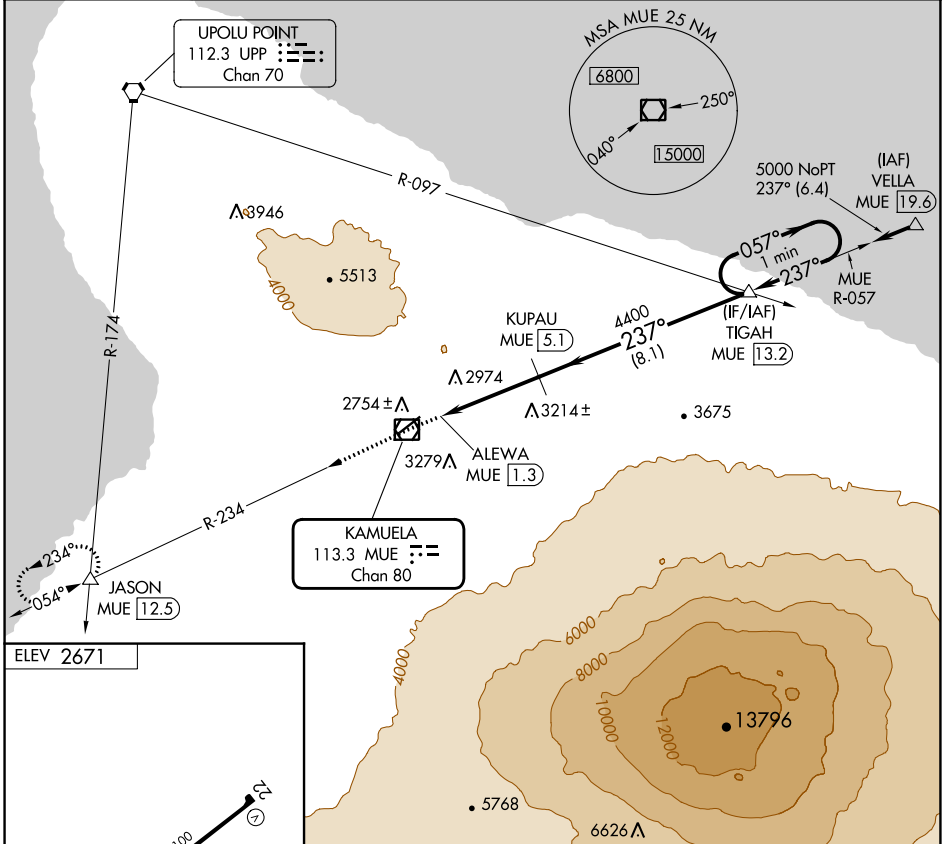
# VOR/DME-A

WAIMEA-KOHALA (MUE)(PHMU)

**NA** When local altimeter not received, procedure NA. Circling NA northwest of Rwy 4-22.

MISSED APPROACH: Climb to 5000 via MUE R-234 to JASON INT/12.5 DME and hold.

AWOS-3PT <b>120.0</b>	HCF CENTER <b>118.45 278.3</b>	CTAF <b>122.9</b>
--------------------------	-----------------------------------	----------------------



CATEGORY	A	B	C	D
CIRCLING	3680-1¼ 1009 (1100-1¼)	3680-1½ 1009 (1100-1½)	3680-3 1009 (1100-3)	3940-3 1269 (1300-3)

PAC, 11 JUL 2024 to 05 SEP 2024

PAC, 11 JUL 2024 to 05 SEP 2024