

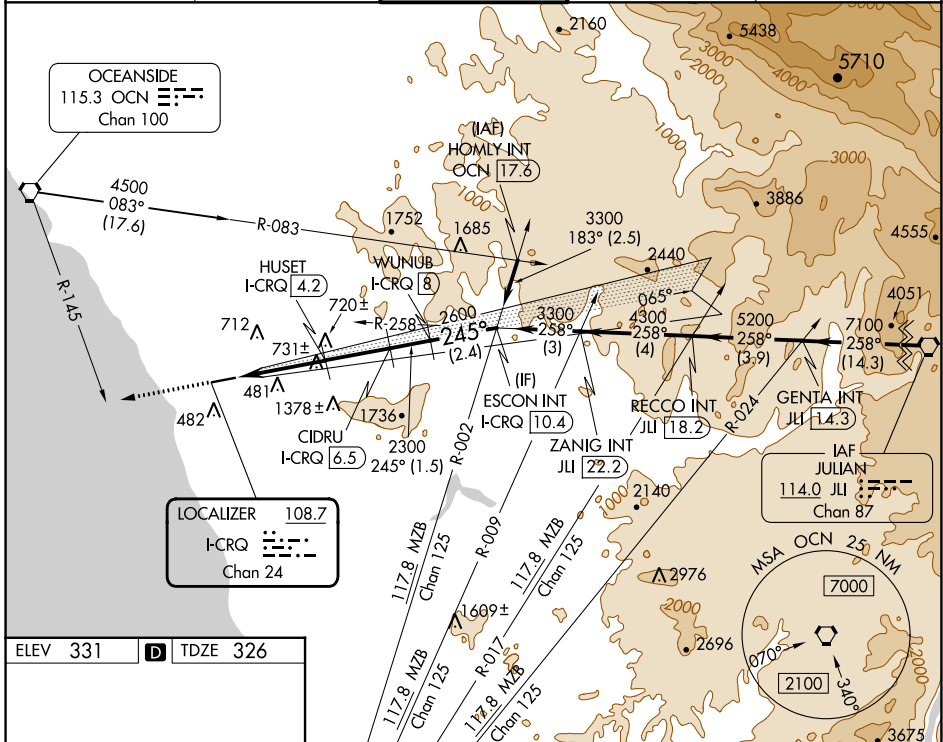
LOC/DME I-CRQ 108.7 Chan 24	APP CRS 245°	Rwy Idg 4897 TDZE 326 Apt Elev 331
---	------------------------	---

ILS or LOC RWY 24

MC CLELLAN-PALOMAR (CRQ)

<p>▽ Inop table does not apply to S-ILS Rwy 24. ▲ Autopilot coupled approach NA below 960. DME required. Rwy 24 helicopter visibility reduction below RVR 4000 NA. For inop ALS, increase S-LOC 24 Cat A/B visibility to RVR 5500 and Cat C visibility to 1% SM.</p>	<p>MAISR </p>	<p>MISSED APPROACH: Climb to 3000 on heading 245° and on OCN VORTAC R-145 to OCN VORTAC and hold.</p>
--	-------------------	---

ATIS 120.15	SOCAL APP CON 127.3 323.0	PALOMAR TOWER * 118.6 (CTAF) 0 276.4	GND CON 121.8	CLNC DEL 134.85
-----------------------	-------------------------------------	---	-------------------------	---------------------------



ELEV 331	D	TDZE 326

3000	OCN R-145	OCN	WUNUB I-CRQ [8]	ESCON INT I-CRQ [10.4]	
hdg 245°			HUSET I-CRQ [4.2]	CIDRU I-CRQ [6.5]	
*LOC only		*I-CRQ [2.7]	2300	2600	
I-CRQ [0.9]			1640*	2300	
				GS 3.20° TCH 55	
	1.8 NM	1.5 NM	2.4 NM	1.5 NM	2.4 NM

CATEGORY	A	B	C	D
S-ILS 24	527/40	201 (200-¾)	576/40 250 (300-¾)	NA
S-LOC 24	1000/40	674 (700-¾)	1000-1½ 674 (700-1½)	NA
C CIRCLING	1000-1 669 (700-1)	1020-1 689 (700-1)	1260-2¾ 929 (1000-2¾)	NA

SW-3, 11 JUL 2024 to 08 AUG 2024

SW-3, 11 JUL 2024 to 08 AUG 2024