

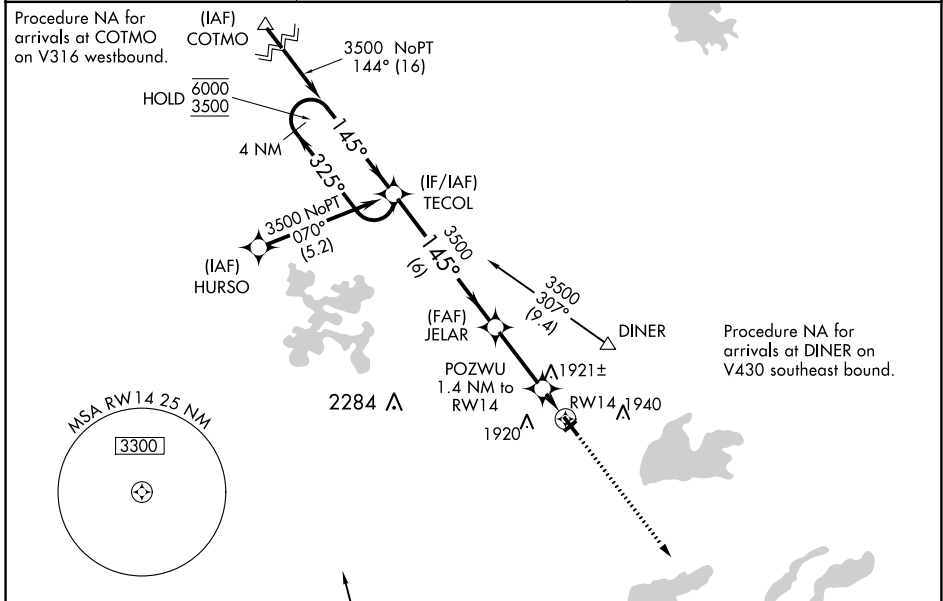
APP CRS	Rwy Idg	3799
145°	TDZE	1705
	Apt Elev	1706

RNAV (GPS) RWY 14

KINGS LAND O'LAKES (LNL)

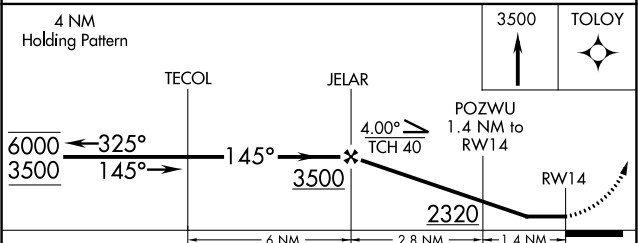
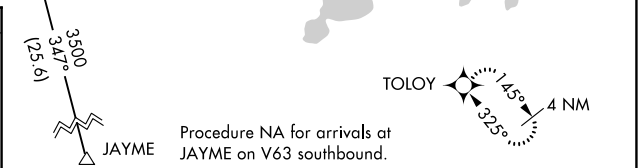
RNP APCH - GPS.	MISSED APPROACH: Climb to 3500 direct TOLOY and hold.
<p>▼ Circling NA to Rwy 5 and 23.</p> <p>▲ Rwy 14 helicopter visibility reduction below 1 SM NA.</p>	

AWOS-3 119.525	MINNEAPOLIS CENTER 133.65 281.5	UNICOM 122.8 (CTAF) 0
--------------------------	---	---------------------------------



ELEV 1706 | TDZE 1705

MIRL Rwy 14-32 **0**
REIL Rwy 14 and 32 **0**



CATEGORY	A	B	C	D
LNAV MDA	2180-1	475 (500-1)	NA	
C CIRCLING	2200-1 494 (500-1)	2240-1 534 (600-1)	NA	

EC-3, 11 JUL 2024 to 08 AUG 2024

EC-3, 11 JUL 2024 to 08 AUG 2024