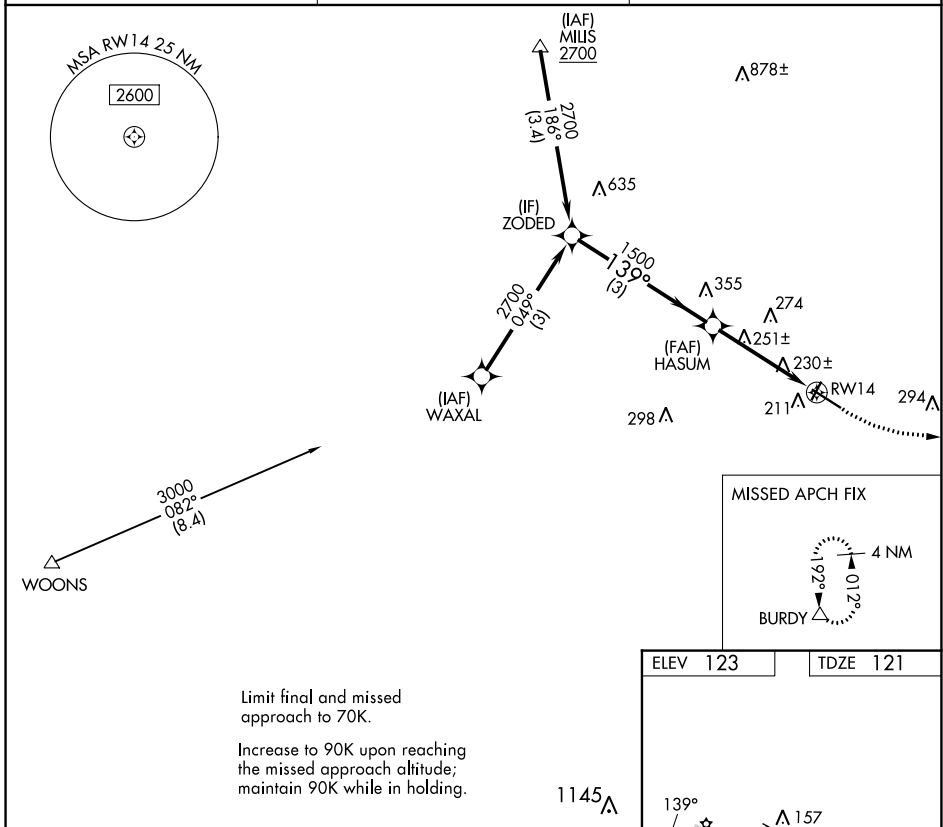


WAAS CH 50444 W14B	APP CRS 139°	Rwy ldg TDZE 121 Apt Elev 123	2991
--	------------------------	---	-------------

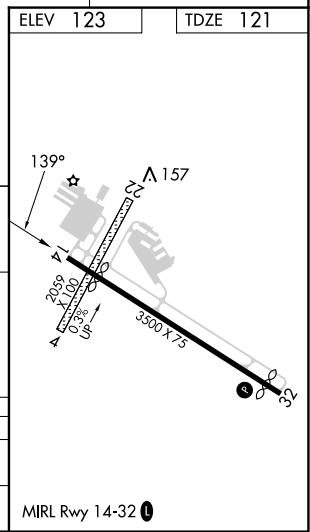
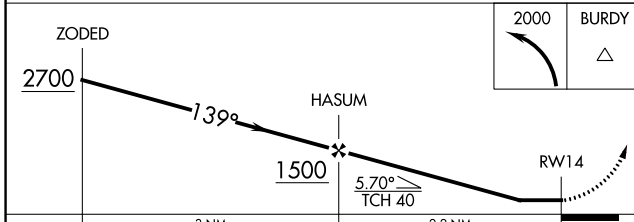
COPTER RNAV (GPS) Y RWY 14

MANSFIELD MUNI (1B9)

RNP APCH - GPS.		MISSED APPROACH: Climbing left turn to 2000 direct BURDY and hold.
Procedure NA at night. Use Taunton altimeter setting.		
TAN ASOS 132.675	BOSTON APP CON 124.1	UNICOM 123.0 (CTAF)



Limit final and missed approach to 70K.
Increase to 90K upon reaching the missed approach altitude; maintain 90K while in holding.



CATEGORY	COPTER		
LP MDA	520-1	399 (400-1)	
LNAV MDA	580-1	459 (500-1)	

NE-1, 11 JUL 2024 to 08 AUG 2024

NE-1, 11 JUL 2024 to 08 AUG 2024