

|  |                        |                             |   |
|--|------------------------|-----------------------------|---|
| WAAS<br>CH <b>63101</b><br><b>W04A</b> | APP CRS<br><b>038°</b> | Rwy Idg<br>TDZE<br>Apt Elev | <b>5000</b><br><b>967</b><br><b>971</b> |
|--|------------------------|-----------------------------|---|

# RNAV (GPS) RWY 4

SHENANDOAH MUNI (SDA)

RNP APCH.

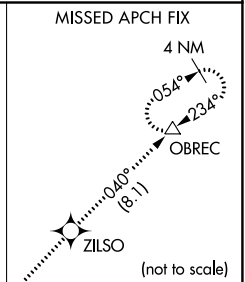
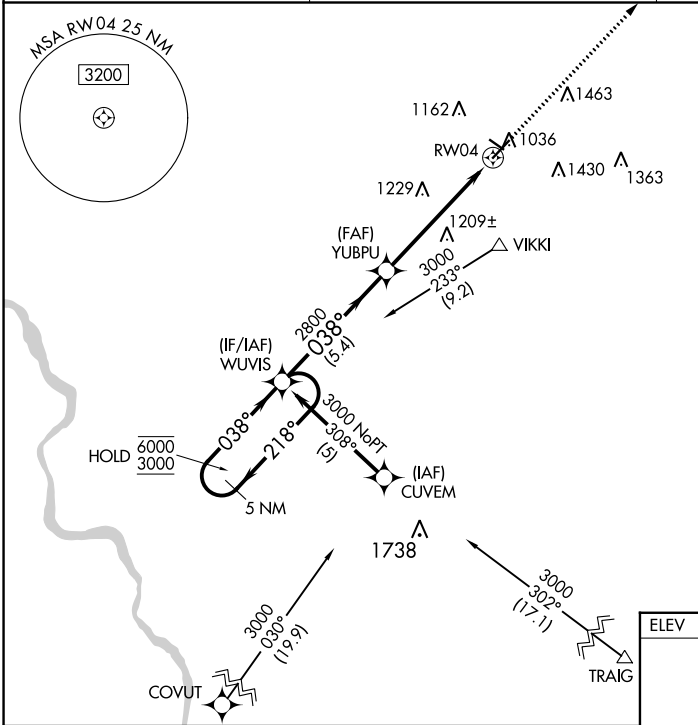
**⚠** Circling Rwy 30 NA at night. VDP NA when using Clarinda altimeter setting. Rwy 4 helicopter visibility reduction below 3/4 SM NA. When local altimeter setting not received, use Clarinda altimeter setting: increase DA to 1275 feet; increase all MDAs 60 feet.

MISSED APPROACH: Climb to 3000 direct ZILSO and on track 040° to OBREC and hold.

AWOS-3  
**125.525**

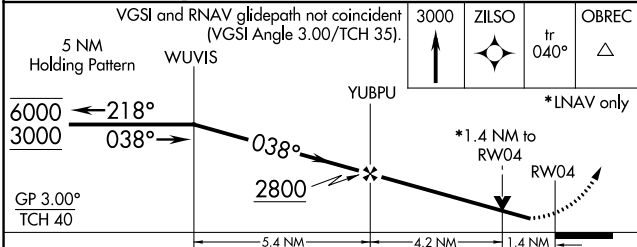
OMAHA APP CON  
**124.5 263.0**

UNICOM  
**122.8 (CTAF)**

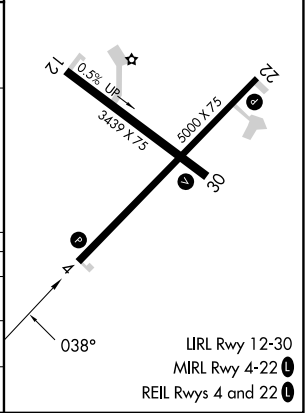


NC-3, 11 JUL 2024 to 08 AUG 2024

NC-3, 11 JUL 2024 to 08 AUG 2024



|          |          |
|----------|----------|
| ELEV 971 | TDZE 967 |
|----------|----------|



| CATEGORY | A                     | B                     | C | D  |
|----------|-----------------------|-----------------------|---|----|
| LPV DA   | 1230-1                | 263 (300-1)           |   | NA |
| RNAV MDA | 1460-1                | 493 (500-1)           |   | NA |
| CIRCLING | 1520-1<br>549 (600-1) | 1540-1<br>569 (600-1) |   | NA |

LIRL Rwy 12-30  
MIRL Rwy 4-22  
REIL Rws 4 and 22