

WAAS CH <b>82438</b> <b>W30A</b>	APP CRS <b>305°</b>	Rwy Idg <b>4000</b> TDZE <b>1121</b> Apt Elev <b>1125</b>
--	------------------------	---

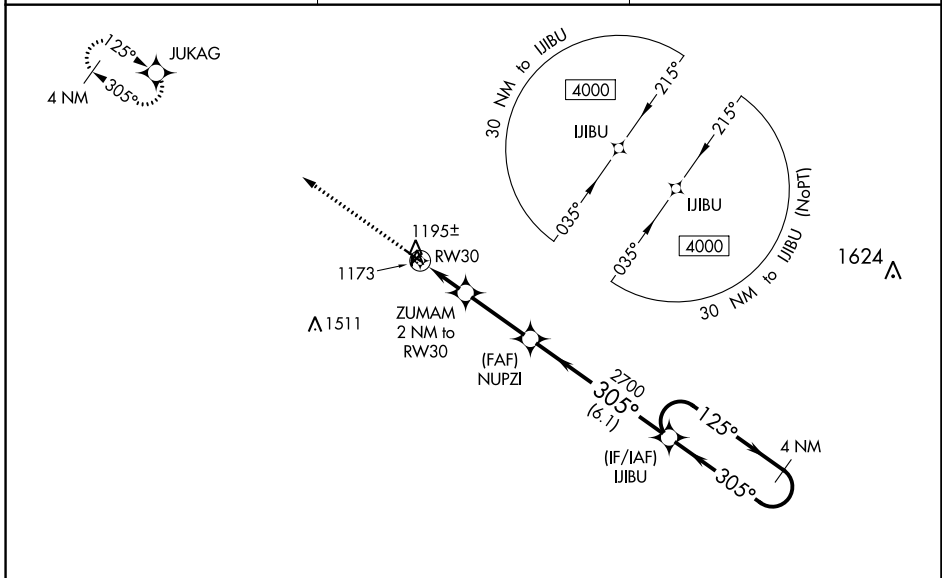
# RNAV (GPS) RWY 30

NORTHEAST IOWA RGNL (CCY)

**⚠** For uncompensated Baro-VNAV systems, LNAV/VNAV NA below -17°C (2°F) or above 54°C (130°F). DME/DME RNP-0.3 NA. Helicopter visibility reduction below ¾ SM NA. When local altimeter setting not received, use Waterloo altimeter setting and increase all DA 110 feet and visibility ¼ mile. Increase all MDA 120 feet, increase LNAV Cat C visibility ¾ mile, and Circling visibility Cat C ½ mile. VDP and Baro-VNAV NA when using Waterloo altimeter setting. Circling Rwy 4-22 and 18-36 NA.

MISSED APPROACH: Climb to 4000 direct JUKAG and hold, continue climb-in-hold to 4000.

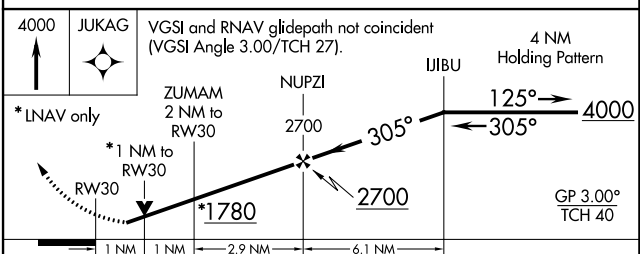
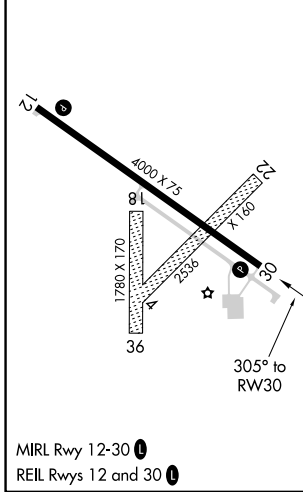
AWOS-3 <b>125.525</b>	WATERLOO APP CON ★ <b>118.9 251.15</b>	UNICOM <b>122.8 (CTAF)</b> <b>📻</b>
--------------------------	---	--



NC-3, 11 JUL 2024 to 08 AUG 2024

NC-3, 11 JUL 2024 to 08 AUG 2024

ELEV 1125	TDZE 1121
-----------	-----------



CATEGORY	A	B	C	D
LPV DA		1371-1 250 (300-1)		NA
LNAV/VNAV DA		1371-1 250 (300-1)		NA
LNAV MDA		1460-1 339 (400-1)		NA
<b>C</b> CIRCLING	1520-1 395 (400-1)	1580-1 455 (500-1)	1760-1¾ 635 (700-1¾)	NA