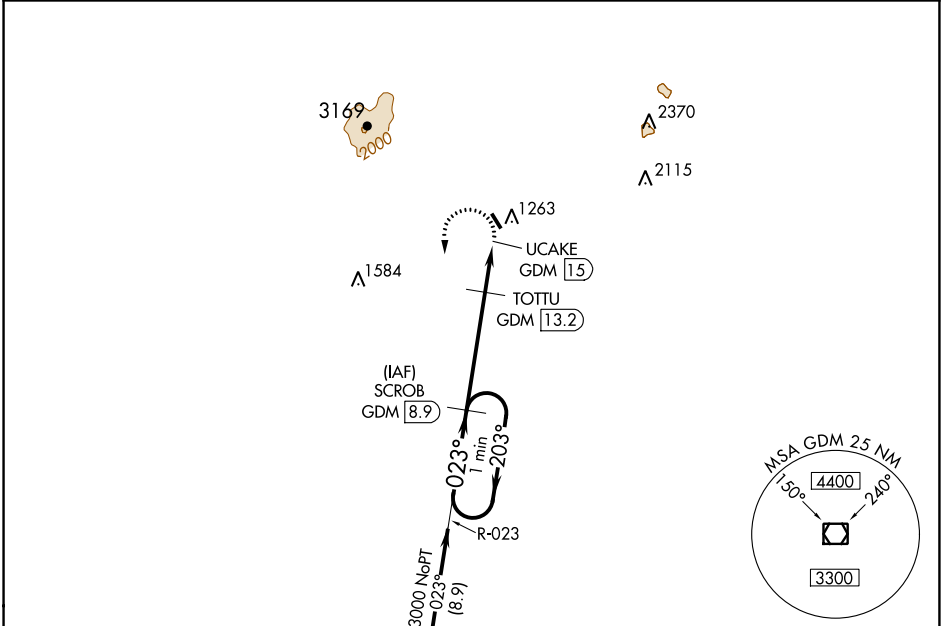


VOR/DME GDM 116.95 Chan 116 (Y)	APP CRS 023°	Rwy Idg TDZE Apt Elev 1040	N/A N/A 1040
---	------------------------	--	---

VOR-A

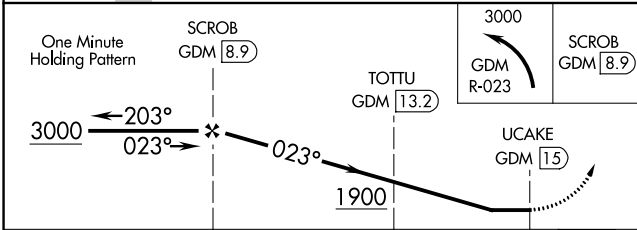
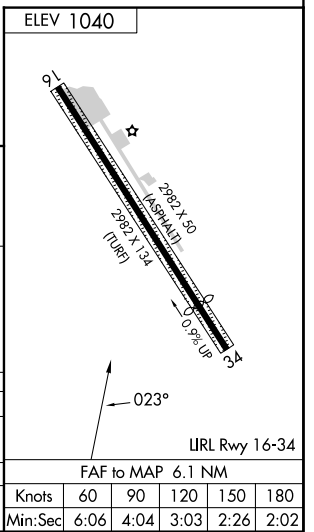
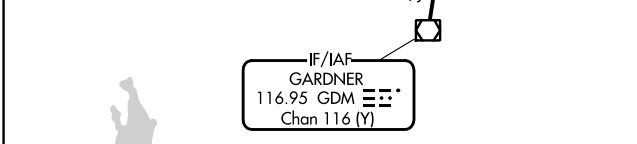
JAFFREY AIRFIELD SILVER RANCH (A/FN)

DME required. When local altimeter setting not received, use KEENE altimeter setting and increase all MDA 120 feet; increase Cat B and TOTU fix minimums all Cats visibility ¼ mile. Procedure NA at night. Rwy 16 and 34 helicopter visibility reduction below 1 SM NA. Rwy 16 and 34 helicopter visibility reduction below 1 SM NA.		MISSED APPROACH: Climbing left turn to 3000 on GDM VOR/DME R-023 to SCROB/GDM 8.9 DME and hold.
ASOS 135.875	BOSTON CENTER 123.75 338.2	UNICOM 122.8 (CTAF)



NE-1, 11 JUL 2024 to 08 AUG 2024

NE-1, 11 JUL 2024 to 08 AUG 2024



CATEGORY	A	B	C	D
CIRCLING	1900-1¼	860 (900-1¼)		NA
TOTU FIX MINIMUMS				
CIRCLING	1780-1 740 (800-1)	1820-1 780 (800-1)		NA

ELEV 1040	
FAF to MAP 6.1 NM	
Knots	60 90 120 150 180
Min:Sec	6:06 4:04 3:03 2:26 2:02