


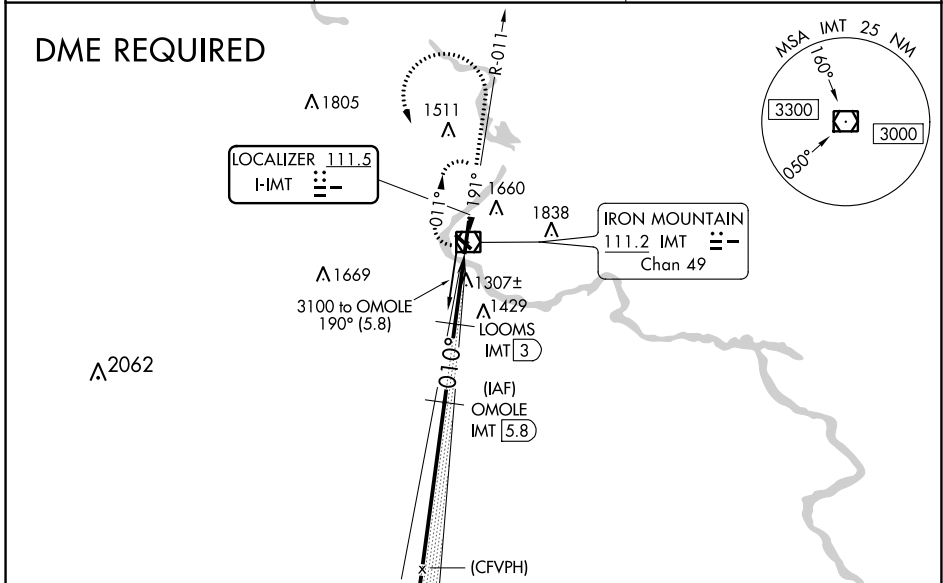
LOC I-IMT <b>111.5</b>	APP CRS <b>010°</b>	Rwy Idg <b>6501</b>
		TDZE <b>1133</b>
		Apt Elev <b>1182</b>

# ILS or LOC RWY 1 FORD (IMT)

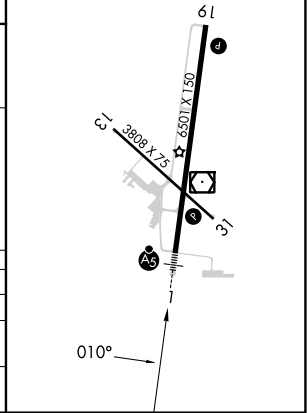
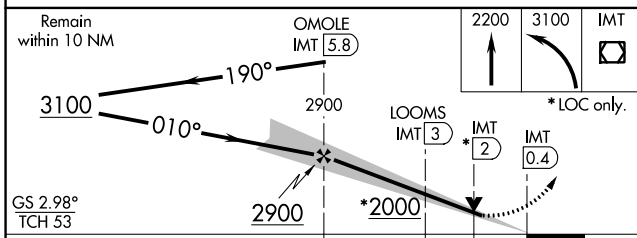
**⚠** Circling NA NE of Rwys 19 and 31. DME required. VDP NA with Escanaba altimeter setting.  
**⚠** NA Night Landing: Rwy 13, 31 NA. When local altimeter setting not received, use Escanaba altimeter setting and increase all DA/MDA 180 feet, increase S-ILS 1 visibility all Cats ¼ mile, increase S-LOC 1 Cat B visibility ¼ mile, Cat C and D visibility ½ mile, increase Circling Cat B visibility ¼ mile, Cat C visibility ¾ mile, Cat D visibility ½ mile. For inoperative MALS R when using Escanaba altimeter setting, increase S-LOC 1 visibility Cat C/D to 2½ mile. DME from IMT VOR/DME. Simultaneous reception of I-IMT and IMT DME required.

**MALS**  
  
**MISSED APPROACH:**  
 Climb to 2200 then climbing left turn to 3100 direct IMT VOR/DME and hold.

ASOS <b>119.025</b>	MINNEAPOLIS CENTER <b>121.25 322.5</b>	UNICOM <b>122.8</b> (CTAF) <b>L</b>
------------------------	---	--



ELEV 1182	<b>D</b>	TDZE 1133
MIRL Rwy 13-31 <b>L</b>		
HIRL Rwy 1-19 <b>L</b>		
REIL Rwys 19 and 31 <b>L</b>		



CATEGORY	A	B	C	D
S-ILS 1	1333-½		200 (200-½)	
S-LOC 1	1720-½	587 (600-½)	1720-1¼	587 (600-1¼)
<b>C</b> CIRCLING	1720-1 538 (600-1)	1780-1 598 (600-1)	1780-1¾ 598 (600-1¾)	1840-2 658 (700-2)

EC-1, 11 JUL 2024 to 08 AUG 2024

EC-1, 11 JUL 2024 to 08 AUG 2024