

APP CRS	Rwy Idg	<b>6376</b>
<b>190°</b>	TDZE	<b>1182</b>
	Apt Elev	<b>1182</b>

# RNAV (GPS) RWY 19

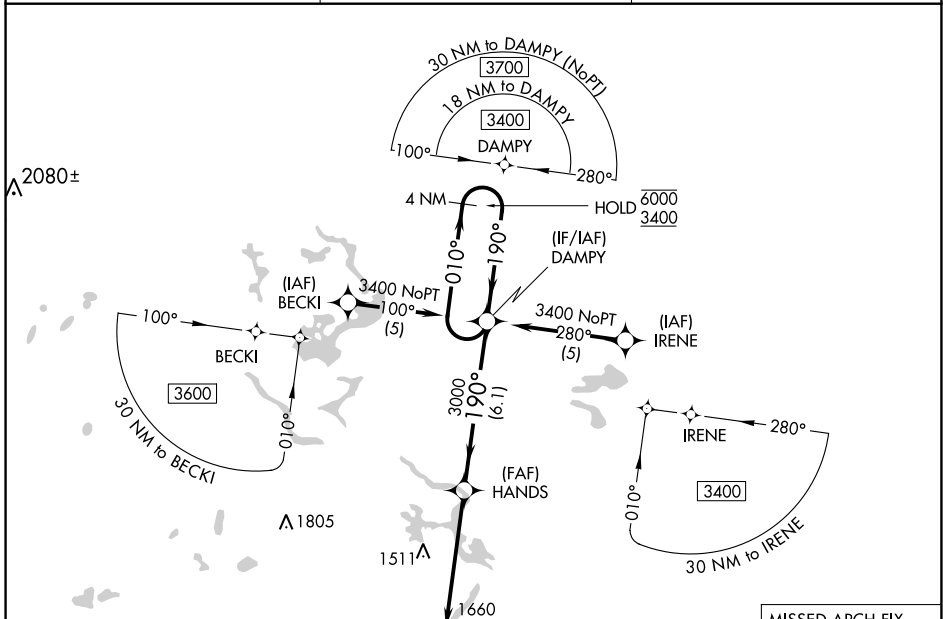
FORD (IMT)

RNP APCH-GPS.

▼ Circling NA northeast of Rwy 19 and 31. Rwy 19 helicopter visibility reduction below 1 SM NA.  
 ▲ Straight-in Rwy 19 NA at night, Circling Rwy 13, 19, 31 NA at night.

MISSED APPROACH:  
 Climb to 3400 direct  
 SEYOC and hold.

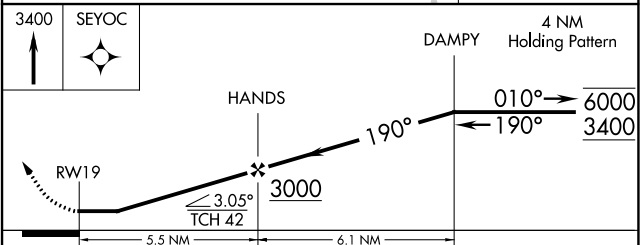
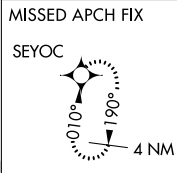
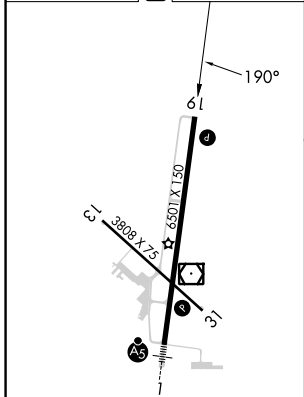
ASOS <b>119.025</b>	MINNEAPOLIS CENTER <b>121.25 322.5</b>	UNICOM <b>122.8 (CTAF) 0</b>
------------------------	---	---------------------------------



EC-1, 11 JUL 2024 to 08 AUG 2024

EC-1, 11 JUL 2024 to 08 AUG 2024

ELEV	1182	<b>D</b>	TDZE	1182
------	------	----------	------	------



CATEGORY	A	B	C	D
LNAV MDA	1760-1	578 (600-1)	1760-1½	578 (600-1½)
<b>C</b> CIRCLING	1760-1 578 (600-1)	1780-1 598 (600-1)	1780-1½ 598 (600-1½)	1840-2 658 (700-2)