

WAAS CH 53305 W09A	APP CRS 094°	Rwy ldg TDZE Apt Elev	5350 19 19
--	------------------------	-----------------------------	---------------------------------------

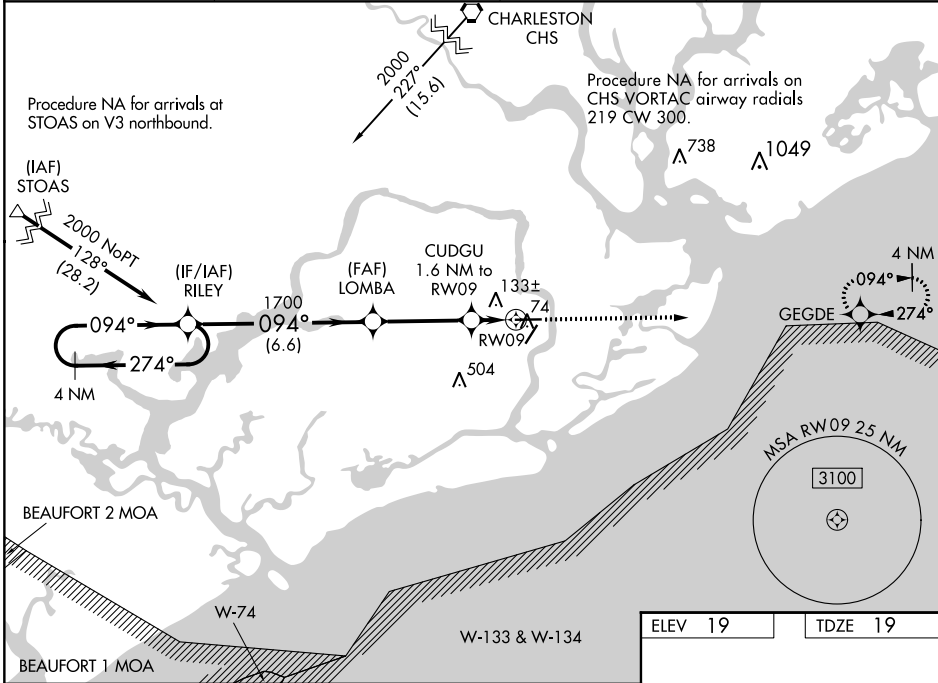
RNAV (GPS) RWY 9

CHARLESTON EXEC (JZI)

▼ For uncompensated Baro-VNAV systems, LNAV/VNAV NA below -15°C (5°F) or above 43°C (109°F).
 ▲ DME/DME RNP-0.3 NA. Visibility reduction by helicopters NA. Baro-VNAV and VDP NA when using Charleston AFB/Intl altimeter setting. When local altimeter setting not received, use Charleston AFB/Intl altimeter setting and increase LPV DA to 251 feet; increase LNAV/VNAV DA to 346 feet and all MDAs 40 feet; increase LNAV Cats C/D ¼ SM and Circling visibility Cats C/D ¼ SM.

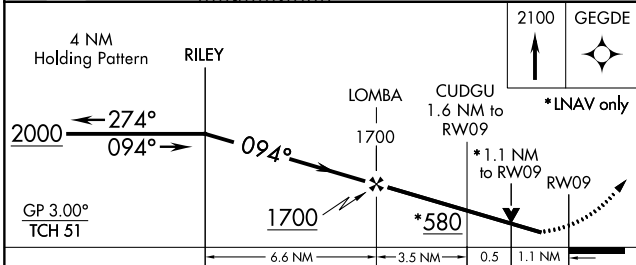
MISSED APPROACH:
 Climb to 2100 direct GEGDE and hold.

AWOS-3 123.775	CHARLESTON APP CON 120.7 306.925	CLNC DEL 119.85	UNICOM 122.8 (CTAF) 📻
--------------------------	--	---------------------------	--

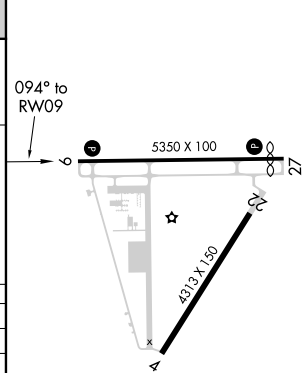


SE-2, 11 JUL 2024 to 08 AUG 2024

SE-2, 11 JUL 2024 to 08 AUG 2024



ELEV 19	TDZE 19
---------	---------



CATEGORY	A	B	C	D
LPV DA		219-¾	200 (200-¾)	
LNAV/VNAV DA		314-1	295 (300-1)	
LNAV MDA	400-1	381 (400-1)	400-1⅛	381 (400-1⅛)
CIRCLING	460-1 441 (500-1)	480-1 461 (500-1)	860-2½ 841 (900-2½)	860-2¾ 841 (900-2¾)

REIL Rwy 9 and 27 **📻**
 MIRL Rwy 4-22 **📻**
 HIRL Rwy 9-27 **📻**