

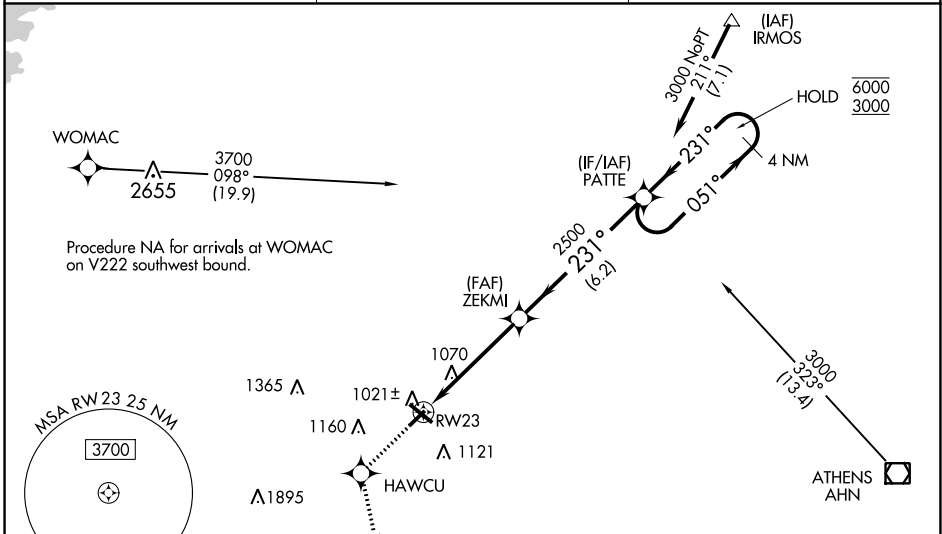
WAAS CH 82516 W23A	APP CRS 231°	Rwy Idg TDZE Apt Elev	3607 929 934
--	------------------------	-----------------------------	---

RNAV (GPS) RWY 23

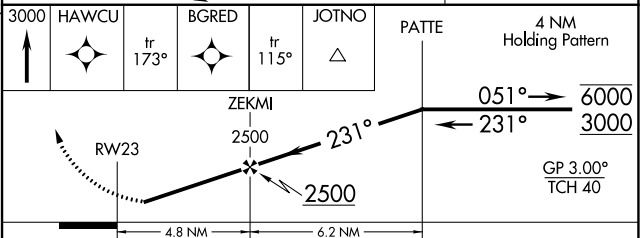
BARROW COUNTY (WDR)

RNP APCH.	MISSED APPROACH: Climb to 3000 direct HAWCU and on track 173° to BGRED and on track 115° to JOTNO and hold.
<p>▼ For uncompensated Baro-VNAV systems, LNAV/VNAV NA below -16°C or above 54°C. Straight-in Rwy 23 NA at night, Circling Rwy 13, 23 NA at night. Rwy 23 helicopter visibility reduction below 1 SM NA.</p>	

AWOS-3 118.575	ATLANTA APP CON ★ 132.475 291.1	UNICOM 123.0 (CTAF)
--------------------------	---	-------------------------------



3000	HAWCU	tr 173°	BGRED	tr 115°	JOTNO	PATTE	4 NM Holding Pattern
------	-------	---------	-------	---------	-------	-------	----------------------



CATEGORY	A	B	C	D
LPV DA		1179-1	250 (300-1)	
LNAV/VNAV DA		1274-1	345 (400-1)	
LNAV MDA	1320-1	391 (400-1)	1320-1½	391 (400-1½)
CIRCLING	1400-1 466 (500-1)	1580-1 646 (700-1)	1660-2 726 (800-2)	1660-2¼ 726 (800-2¼)

SE-4, 11 JUL 2024 to 08 AUG 2024

SE-4, 11 JUL 2024 to 08 AUG 2024