

WAAS CH <b>90230</b> <b>W19A</b>	APP CRS <b>186°</b>	Rwy Idg TDZE Apt Elev	<b>5201</b> <b>915</b> <b>925</b>
--	------------------------	-----------------------------	---

# RNAV (GPS) RWY 19

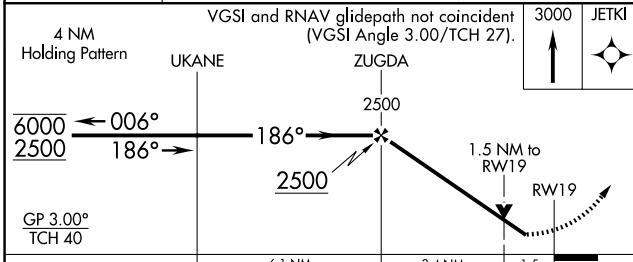
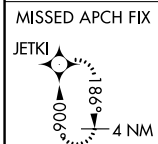
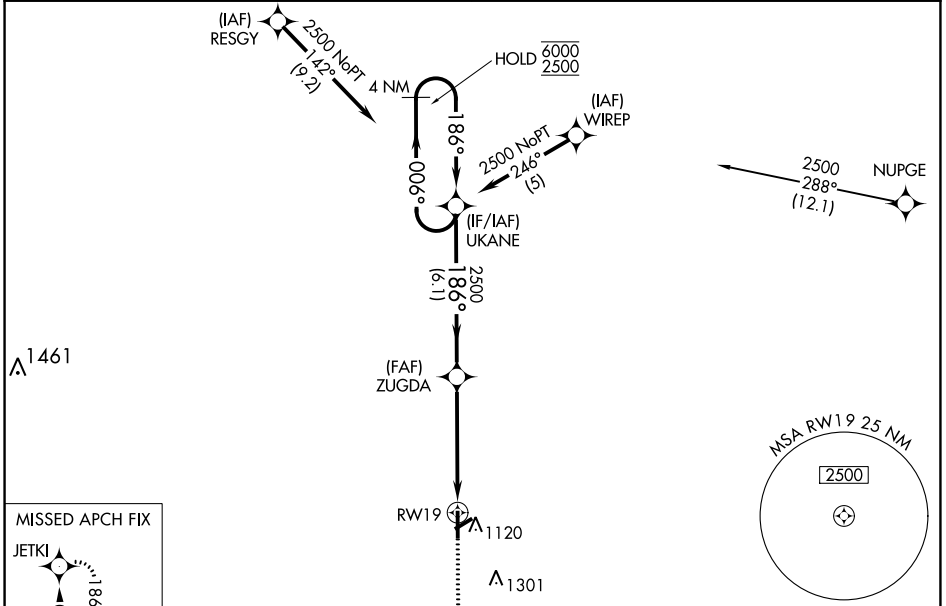
KIRSCH MUNI (IRS)

RNP APCH - GPS.

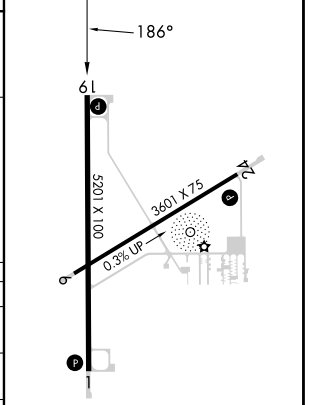
- ⚠ Circling Rwy 6 NA at night. Rwy 19 helicopter visibility reduction below ¼ SM NA. Baro-VNAV NA.
- ⚠ When local altimeter setting not received, use Three Rivers altimeter setting and increase LPV DA to 1276 feet and all visibilities ½ SM. Increase LNAV/VNAV DA to 1270 feet and all visibilities ½ SM. Increase all MDAs 60 feet and LNAV visibility Cat C/D ¼ SM, and Circling visibility Cat C/D ¼ SM.

**MISSED APPROACH:**  
Climb to 3000 direct  
JETKI and hold.

AWOS-3 <b>121.325</b>	GREAT LAKES APP CON * <b>121.2 239.25</b>	CLNC DEL <b>118.325</b>	UNICOM <b>123.05 (CTAF)</b>
--------------------------	--	----------------------------	--------------------------------



ELEV <b>925</b>	TDZE <b>915</b>
-----------------	-----------------



CATEGORY	A	B	C	D
LPV DA		1235-7/8	320 (400-7/8)	
LNAV/VNAV DA		1229-7/8	314 (400-7/8)	
LNAV MDA	1400-1	485 (500-1)	1400-1 3/8	485 (500-1 3/8)
CIRCLING	1440-1	515 (600-1)	1620-2 695 (700-2)	1620-2 1/4 695 (700-2 1/4)

REIL Rws 1, 19 and 24  
MIRL Rws 1-19 and 6-24

EC-1, 11 JUL 2024 to 08 AUG 2024

EC-1, 11 JUL 2024 to 08 AUG 2024