

(AHMET4.KKIDS) 20086

AL-5370 (FAA)

BURKE LAKEFRONT (BKL)  
CLEVELAND, OHIO

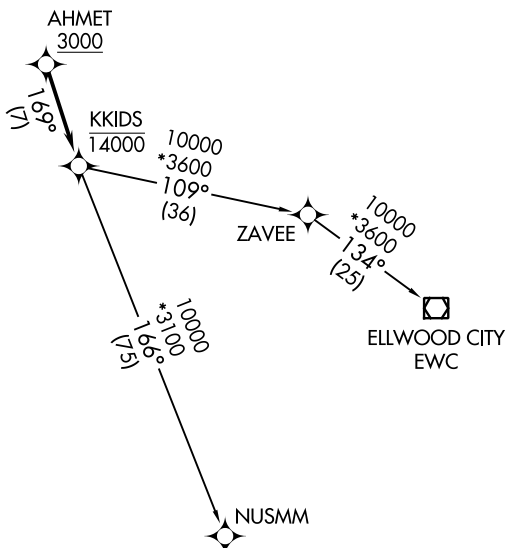
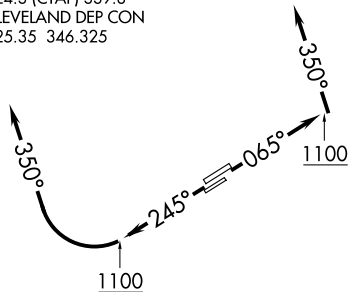
# AHMET FOUR DEPARTURE (RNAV)

**TOP ALTITUDE:  
ASSIGNED BY ATC**

ATIS  
125.25  
CLNC DEL  
339.8  
121.9 (when tower closed)  
GND CON  
121.9 339.8  
LAKEFRONT TOWER ★  
124.3 (CTAF) 339.8  
CLEVELAND DEP CON  
125.35 346.325

**TAKEOFF MINIMUMS:**

Rwys 6L/R, 24R: Standard with minimum climb of 500' per NM to 1100.  
Rwy 24L: 400-1<sup>3</sup>/<sub>8</sub> or standard with minimum climb of 757' per NM to 1000.



NOTE: RNAV 1.  
NOTE: RADAR required.  
NOTE: DME/DME/IRU or GPS required.

NOTE: Chart not to scale.

## DEPARTURE ROUTE DESCRIPTION

**TAKEOFF RUNWAYS 6L/R:** Climb on heading 065° to 1100, then on heading 350° or as assigned by ATC, maintain 2000 (do not climb above 2000) for RADAR vectors to cross AHMET at or above 3000, thence....

**TAKEOFF RUNWAYS 24L/R:** Climb on heading 245° to 1100, then right turn to heading 350° or as assigned by ATC, maintain 2000 (do not climb above 2000) for RADAR vectors to cross AHMET at or above 3000, thence....

....on track 169° to cross KKIDS at or below 14000, then on (transition).  
Maintain altitude assigned by ATC, expect filed altitude ten minutes after departure.

ELLWOOD CITY TRANSITION (AHMET4.EWC)  
NUSMM TRANSITION (AHMET4.NUSMM)

AHMET FOUR DEPARTURE (RNAV)

(AHMET4.KKIDS) 26MAR20

CLEVELAND, OHIO  
BURKE LAKEFRONT (BKL)

EC-2, 11 JUL 2024 to 08 AUG 2024

EC-2, 11 JUL 2024 to 08 AUG 2024