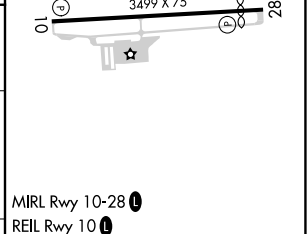
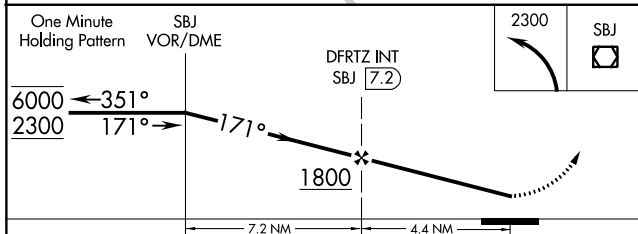
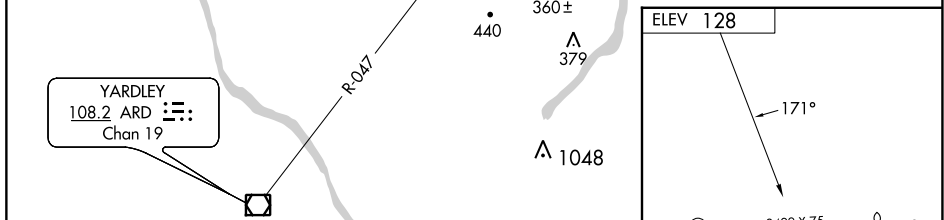
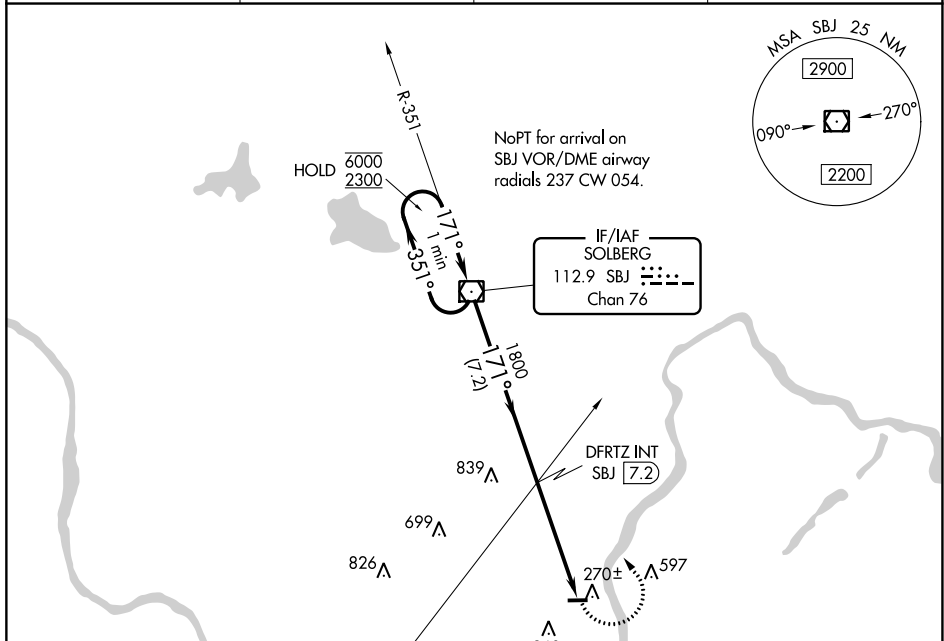


VOR/DME SBJ 112.9 Chan 76	APP CRS 171°	Rwy Idg TDZE Apt Elev 128	N/A N/A
---	------------------------	--	--------------------------

VOR-A
PRINCETON (39N)

DME required.	MISSED APPROACH: Climbing left turn to 2300 direct SBJ VOR/DME and hold.
---------------	--

TTN ASOS 126.775	NEW YORK APP CON 132.8 379.9	UNICOM 122.725 (CTAF)	123.05 0
----------------------------	--	---------------------------------	-----------------



One Minute Holding Pattern	SBJ VOR/DME	DFRTZ INT SBJ 7.2	2300 SBJ		
6000 ← 351°	171° →	1800			
2300		7.2 NM	4.4 NM		
CATEGORY	A	B	C	D	
C CIRCLING	1040-1¼	912 (1000-1¼)	NA		
FAF to MAP 4.4 NM					
Knots	60	90	120	150	180
Min:Sec	4:24	2:56	2:12	1:46	1:28

NE-2, 11 JUL 2024 to 08 AUG 2024

NE-2, 11 JUL 2024 to 08 AUG 2024