

WAAS CH <b>86340</b> <b>W03A</b>	APP CRS <b>030°</b>	Rwy Idg TDZE Apt Elev	<b>8999</b> <b>6556</b> <b>6609</b>
--	------------------------	-----------------------------	---

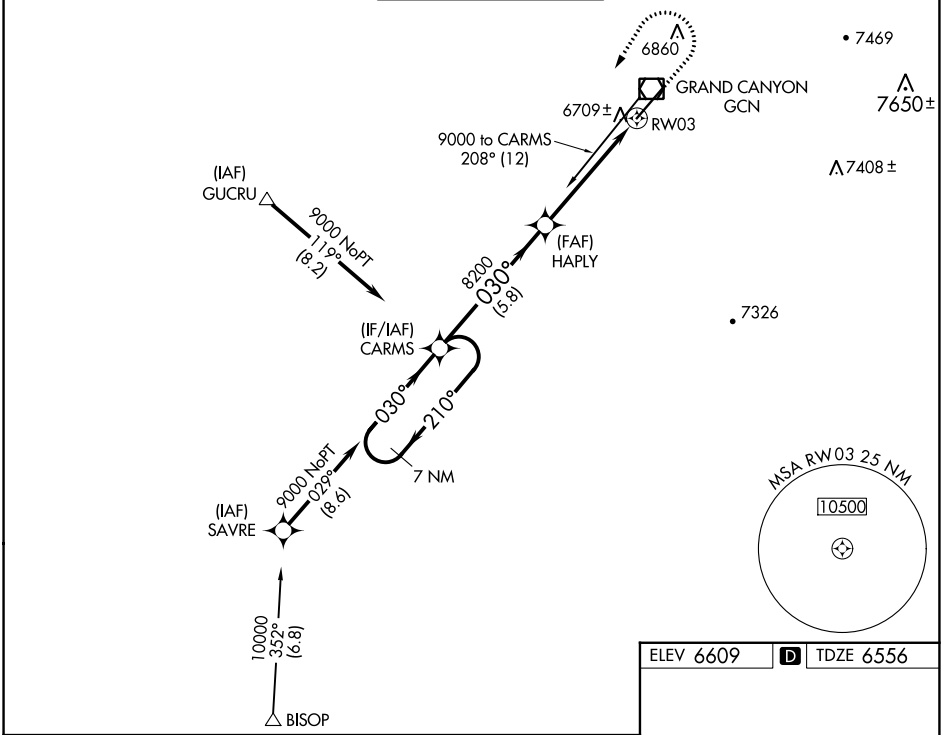
# RNAV (GPS) RWY 3

GRAND CANYON NTL PARK (GCN)

**▽** For uncompensated Baro-VNAV systems, LNAV/VNAV NA  
**▲** below -12°C (11°F) or above 44°C (111°F).  
 DME/DME RNP-0.3 NA.

MISSED APPROACH: Climb to 7000 then climbing left turn to 9000 direct CARMS and hold.

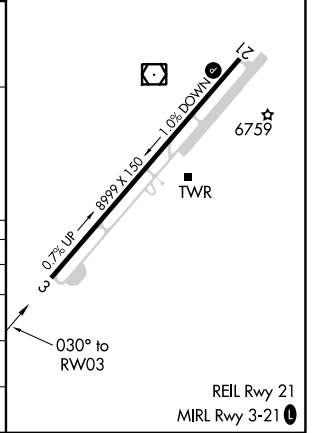
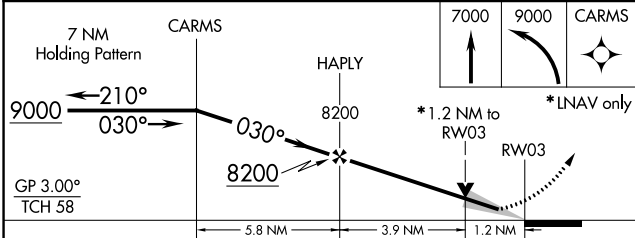
ATIS <b>124.3</b>	LOS ANGELES CENTER <b>124.85 319.2</b>	CANYON TOWER* <b>119.0 (CTAF) 0</b>	GND CON <b>121.9</b>	UNICOM <b>122.95</b>
----------------------	---	--	-------------------------	-------------------------



SW-4, 11 JUL 2024 to 08 AUG 2024

SW-4, 11 JUL 2024 to 08 AUG 2024

ELEV 6609	<b>D</b> TDZE 6556
-----------	--------------------



CATEGORY	A	B	C	D
LPV DA		6797-3/4	241 (200-3/4)	
LNAV/VNAV DA		6981-1 1/2	425 (400-1 1/2)	
LNAV MDA	6960-1	404 (400-1)	6960-1 1/8	404 (400-1 1/8)
<b>C</b> CIRCLING	7140-1 1/4 531 (600-1 1/4)	7200-1 1/2 591 (600-1 1/2)	7280-3 671 (700-3)	7620-3 1011 (1100-3)

REIL Rwy 21  
 MIRL Rwy 3-21