

| | | | |
|-------------------------|-------------|----------|-------------|
| VOR/DME H ^{UO} | APP CRS | Rwy Idg | 3358 |
| 116.1 | 039° | TDZE | 548 |
| Chan 108 | | Apt Elev | 548 |

VOR/DME or GPS RWY 5

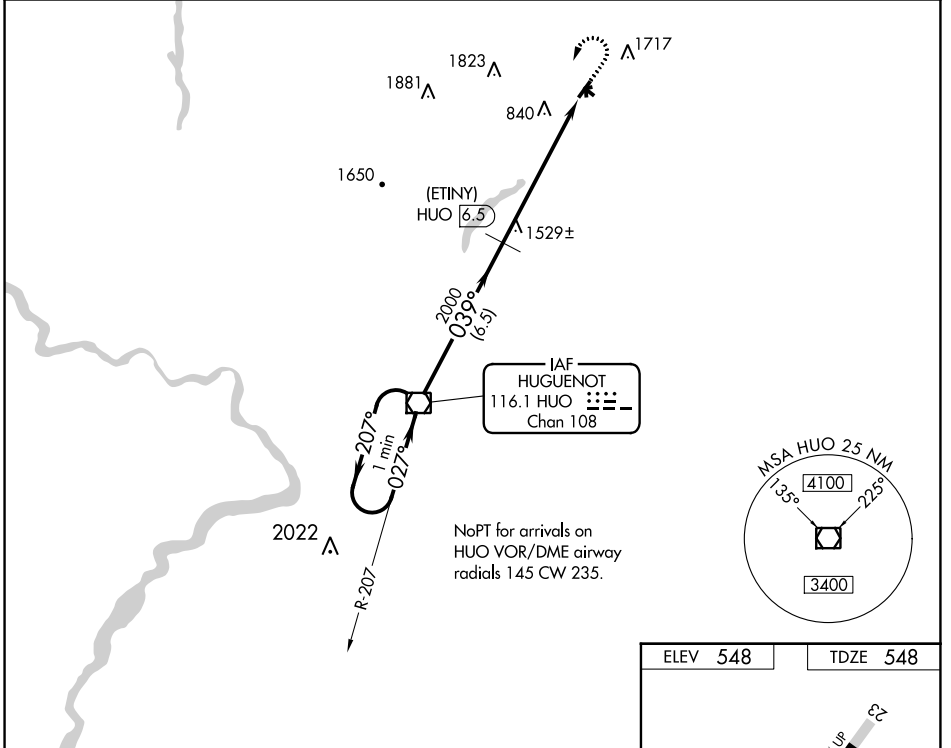
WURTSBORO/SULLIVAN COUNTY (N82)

▼ Obtain local altimeter setting on CTAF, when not received, procedure NA. Procedure not authorized at night. Circling Cat B/C NA north of Rwy 9/27. Helicopter visibility reduction below 1 SM NA.

MISSED APPROACH: Climb to 2300 then climbing left turn to 3500 direct H^{UO} VOR/DME and hold.

NEW YORK APP CON
132.75 363.1

UNICOM
122.8 (CTAF)

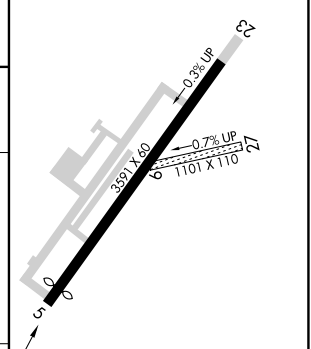
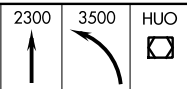
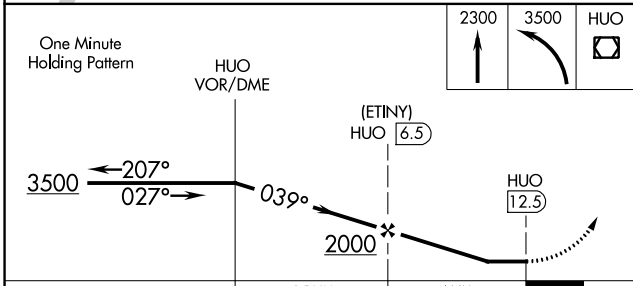


NE-2, 11 JUL 2024 to 08 AUG 2024

NE-2, 11 JUL 2024 to 08 AUG 2024

NoPT for arrivals on H^{UO} VOR/DME airway radials 145 CW 235.

| | |
|----------|----------|
| ELEV 548 | TDZE 548 |
|----------|----------|



| CATEGORY | A | B | C | D |
|----------|---------------------------|---------------------------|-------------------------|----|
| S-5 | 1880-1¼ 1332 (1400-1¼) | 1880-1½ 1332 (1400-1½) | 1880-3 1332 (1400-3) | NA |
| CIRCLING | 1880-1¼ 1332 (1400-1¼) | 1880-1½ 1332 (1400-1½) | 2020-3 1472 (1500-3) | NA |