

LOC/DME I-SEE <b>110.5</b> Chan 42	APP CRS <b>269°</b>	Rwy Idg TDZE Apt Elev <b>N/A</b> <b>N/A</b> <b>388</b>
--	------------------------	---

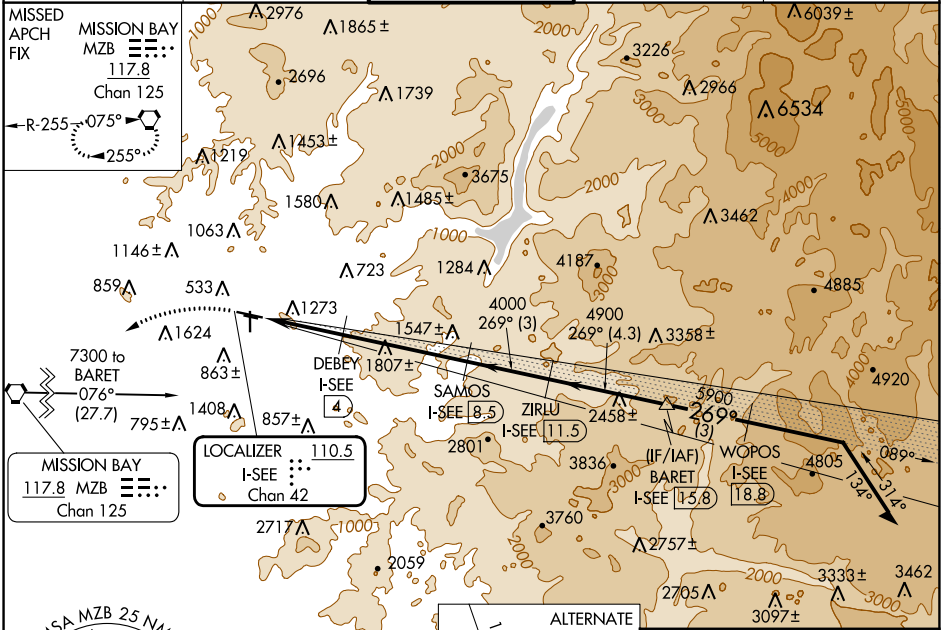
**LOC-D**  
GILLESPIE FLD (SE/E)

DME required.

**▼** When local altimeter setting not received, use Miramar MCAS altimeter setting and increase all MDA 40 feet. Circling NA northeast of Rwy 27R-17. Circling Rwy 27R, 35 NA at night.

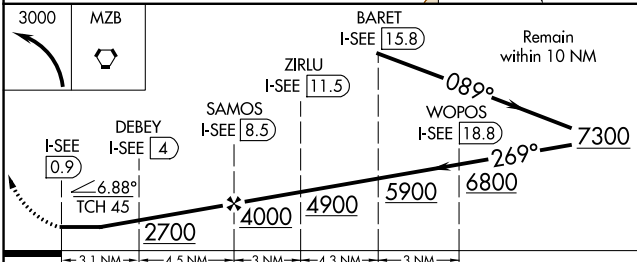
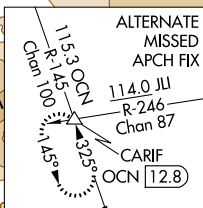
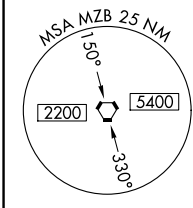
MISSED APPROACH: Climbing left turn to 3000 direct to MZB VORTAC and hold.

ATIS <b>125.45</b>	SOCAL APP CON <b>124.35 279.625</b>	GILLESPIE TOWER* <b>120.7 (CTAF) 257.8</b>	GND CON <b>121.7</b>	CLNC DEL <b>125.1</b>
-----------------------	--	---	-------------------------	--------------------------

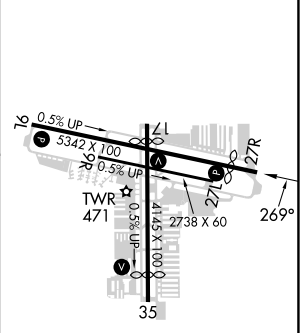


SW-3, 11 JUL 2024 to 08 AUG 2024

SW-3, 11 JUL 2024 to 08 AUG 2024



ELEV 388



CATEGORY	A	B	C	D
CIRCLING	1500-1¼ 1112 (1200-1¼)	1500-1½ 1112 (1200-1½)	1940-3	1552 (1600-3)

MIRL Rwy 9L-27R and 17-35  
REIL Rwy 27R