

(PADRZ2.PADRZ) 21168

# PADRZ TWO DEPARTURE (RNAV)

AL-5402 (FAA)

GILLESPIE FLD (SEE)  
SAN DIEGO/EL CAJON, CALIFORNIA

ATIS  
125.45  
GILLESPIE TOWER\*  
120.7 257.8  
SOCAL DEP CON  
119.6 363.1

**TOP ALTITUDE:  
15000**



## DEPARTURE ROUTE DESCRIPTION

TAKEOFF RUNWAYS 9L/9R: Climbing right turn heading 165° and on MZB R-076 to MZB VORTAC to 3000, expect vectors to cross GYWNN at or above 8000, then on track 308° to PADRZ, thence. . . .

TAKEOFF RUNWAY 17: Climb heading 165° and on MZB R-076 to MZB VORTAC to 2800, expect vectors to cross GYWNN at or above 8000, then on track 308° to PADRZ, thence. . . .

TAKEOFF RUNWAYS 27L/27R: Climbing right turn heading 320° to 3000, expect vectors to cross GYWNN at or above 8000, then on track 308° to PADRZ, thence. . . .

TAKEOFF RUNWAY 35: Climbing left turn heading 320° to 3000, expect vectors to cross GYWNN at or above 8000, then on track 308° to PADRZ, thence. . . .  
. . . .on (transition). Maintain 15000. Expect higher altitude 10 minutes after departure.

CHKNN TRANSITION (PADRZ2.CHKNN)

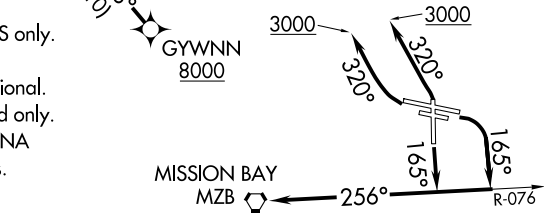
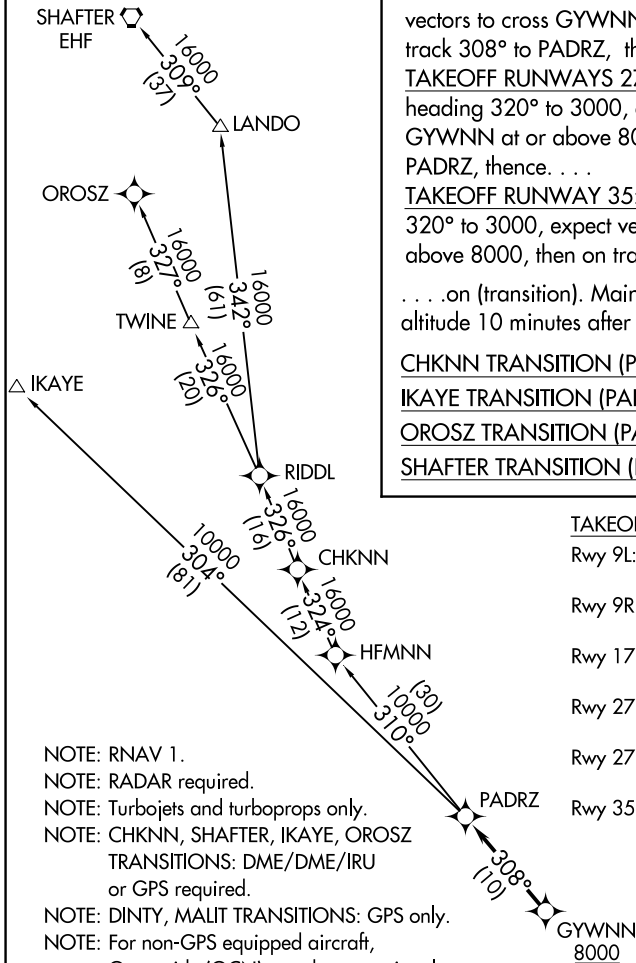
IKAYE TRANSITION (PADRZ2.IKAYE)

OROSZ TRANSITION (PADRZ2.OROSZ)

SHAFTER TRANSITION (PADRZ2.EHF)

## TAKEOFF MINIMUMS

- Rwy 9L: 900-2¾ with minimum climb of 400' per NM to 3600.
- Rwy 9R: 900-2¾ with minimum climb of 405' per NM to 3600.
- Rwy 17: Standard with minimum climb of 480' per NM to 2200.
- Rwy 27L: Standard with minimum climb of 320' per NM to 1200
- Rwy 27R: Standard with minimum climb of 420' per NM to 1200
- Rwy 35: Standard with minimum climb of 400' per NM to 1600.



- NOTE: RNAV 1.
- NOTE: RADAR required.
- NOTE: Turbojets and turboprops only.
- NOTE: CHKNN, SHAFTER, IKAYE, OROSZ TRANSITIONS: DME/DME/IRU or GPS required.
- NOTE: DINTY, MALIT TRANSITIONS: GPS only.
- NOTE: For non-GPS equipped aircraft, Oceanside (OCN) must be operational.
- NOTE: DINTY TRANSITION ATC assigned only.
- NOTE: DINTY and MALIT TRANSITIONS NA from SEE, SDM and RNM airports.

NOTE: Chart not to scale.

# PADRZ TWO DEPARTURE (RNAV)

(PADRZ2.PADRZ) 07DEC17

SAN DIEGO/EL CAJON, CALIFORNIA  
GILLESPIE FLD (SEE)

SW-3, 11 JUL 2024 to 08 AUG 2024

SW-3, 11 JUL 2024 to 08 AUG 2024