

APP CRS	Rwy Idg	N/A
051°	TDZE	N/A
	Apt Elev	733

RNAV (GPS)-A

MORRISVILLE-STOWE STATE (MVL)

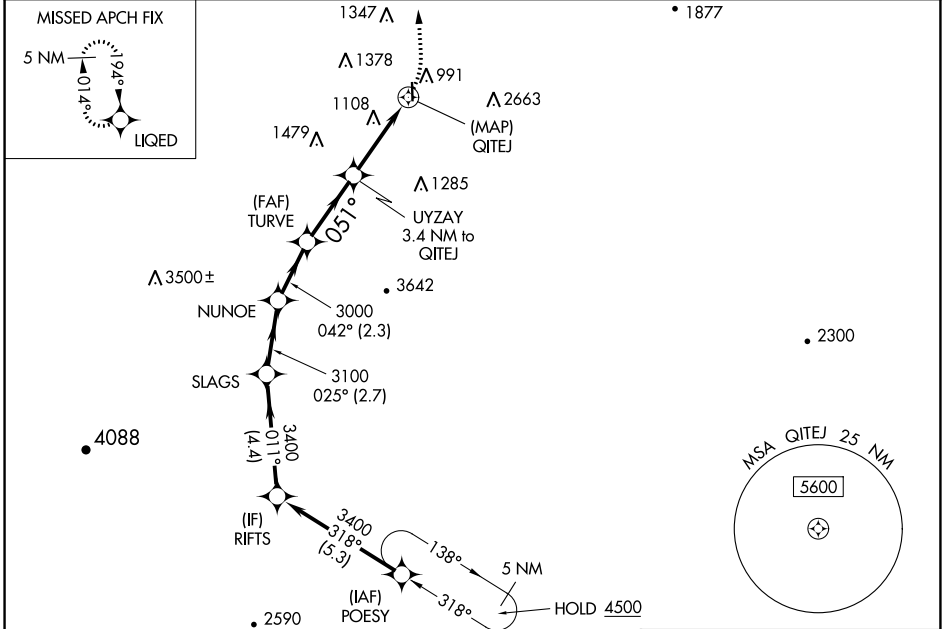
RNP APCH.

⚠ Circling NA for Cat C east of Rwy 1-19. When local altimeter setting not received, use Burlington altimeter setting and increase all MDAs 120 feet.

⚠ -20°C

MISSED APPROACH: Climbing left turn to 5600 direct LIQED and hold, continue climb-in-hold to 5600.

ASOS 135.625	BOSTON CENTER 135.7 282.2	UNICOM 122.8 (CTAF) ①
------------------------	-------------------------------------	--



ELEV 733

Procedure NA for arrival on MPV VOR/DME airway radials 317 CW 037.

MONTPELIER MPV



RIFTS	SLAGS	NUNOE	TURVE	UYZAY	QITEJ	LIQED
3400	3400	3100	3000	1980		
4.4 NM	2.7 NM	2.3 NM	2.9 NM	3.4 NM		

CATEGORY	A	B	C	D	REIL Rws 1 and 19 ① HIRL Rwy 1-19 ①
ⓐ CIRCLING	1620-1¼ 887 (900-1¼)	1780-1½ 1047 (1100-1½)	1980-3 1247 (1300-3)	NA	

NE-1, 11 JUL 2024 to 08 AUG 2024

NE-1, 11 JUL 2024 to 08 AUG 2024