

VOR/DME HCH <b>117.6</b> Chan <b>123</b>	APP CRS <b>240°</b>	Rwy Idg TDZE <b>1662</b> Apt Elev <b>1664</b>	<b>5000</b>
--	------------------------	---	-------------

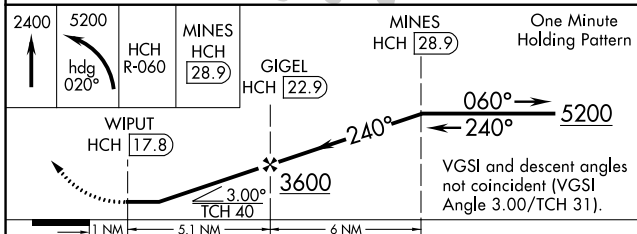
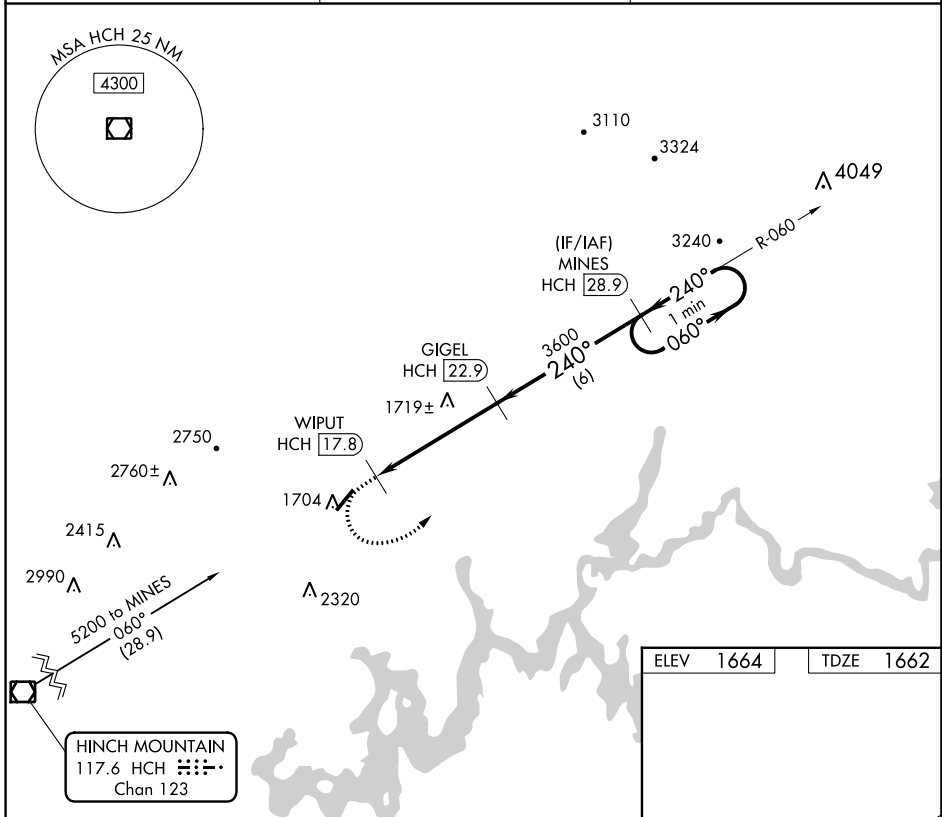
# VOR/DME RWY 22

ROCKWOOD MUNI (R.KW)

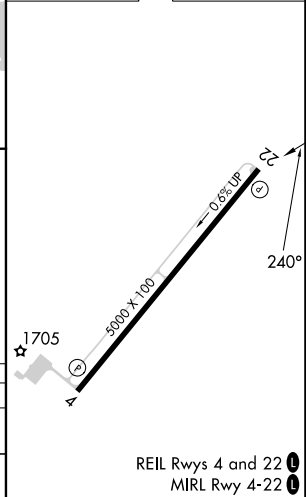
**⚠** Circling Rwy 4 NA at night. When local altimeter setting not received, use Crossville altimeter setting: increase all MDA 80 feet and S-22 Cats C and D visibility ¼ SM, Circling Cat C visibility ½ SM.

**MISSED APPROACH:** Climb to 2400 then climbing left turn to 5200 on heading 020° and HCH R-060 to MINES 28.9 DME and hold.

AWOS-3 <b>118.775</b>	ATLANTA CENTER <b>133.6 254.3</b>	UNICOM <b>122.8 (CTAF)</b>
--------------------------	--------------------------------------	-------------------------------



ELEV 1664	TDZE 1662
-----------	-----------



CATEGORY	A	B	C	D
S-22	2160-1¼ 498 (500-1¼)			2160-1½ 498 (500-1½)
CIRCLING	2160-1¼ 496 (500-1¼)	2200-1¼ 536 (600-1¼)	2260-1½ 596 (600-1½)	2780-3 1116 (1200-3)

REIL Rws 4 and 22  
MIRL Rwy 4-22

SE-1, 11 JUL 2024 to 08 AUG 2024

SE-1, 11 JUL 2024 to 08 AUG 2024