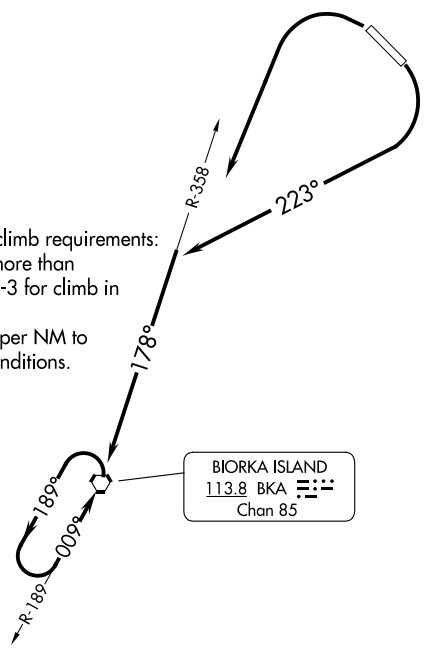


(BKA4.BKA) 23334

BIORKA FOUR DEPARTURE (OBSTACLE)

SITKA ROCKY GUTIERREZ (SIT) (PASI)
AL-5414 (FAA) SITKA, ALASKA

AFIS
135.9
ANCHORAGE CENTER
126.1 335.5
SITKA RADIO
123.6 (CTAF) 122.2



TAKEOFF MINIMUMS

- Rwy 11: Standard with the following minimum climb requirements: 180K or less, 410' per NM to 1900; more than 180K, 645' per NM to 3400, or 3900-3 for climb in visual conditions.
- Rwy 29: Standard with minimum climb of 233' per NM to 1000, or 3900-3 for climb in visual conditions.

WARNING: High terrain all quadrants, Mount Edgecumbe 3201', 13 NM southwest of Sitka Airport.

TAKEOFF OBSTACLE NOTES

- Rwy 11: Trees beginning 1418' from DER, 776' right of centerline, up to 78' AGL/102' MSL.
- Trees beginning 1524' from DER, 576' right of centerline, up to 64' AGL/100' MSL.
- Trees beginning 2001' from DER, 492' right of centerline, up to 89' AGL/115' MSL.
- Trees beginning 2055' from DER, 753' left of centerline, up to 83' AGL/108' MSL.
- Trees beginning 2120' from DER, 548' right of centerline, up to 113' AGL/138' MSL.
- Trees beginning 2210' from DER, 533' right of centerline, up to 110' AGL/135' MSL.
- Trees beginning 3496' from DER, 792' left of centerline, up to 122' AGL/139' MSL.
- Trees beginning 4035' from DER, 774' left of centerline, up to 160' AGL/185' MSL.
- Trees beginning 4203' from DER, 847' left of centerline, up to 123' AGL/153' MSL.
- Trees beginning 4445' from DER, 838' left of centerline, up to 104' AGL/174' MSL.
- Trees beginning 4541' from DER, 529' left of centerline, up to 99' AGL/159' MSL.
- Trees beginning 5139' from DER, 20' right of centerline, up to 161' MSL.
- Tree 6074' from DER, 34' left of centerline, 145' AGL/184' MSL.
- Rwy 29: Tree 124' from DER, 505' right of centerline, 20' AGL/35' MSL.

NOTE: Chart not to scale.

DEPARTURE ROUTE DESCRIPTION

TAKEOFF RUNWAY 11: Climbing right turn heading 223° to intercept BKA R-358 to BKA VORTAC, thence. . . .

TAKEOFF RUNWAY 29: Climbing left turn direct BKA VORTAC, thence. . . .

VCOA ALL RUNWAYS: Obtain ATC approval for VCOA when requesting IFR clearance. Climb in visual conditions to cross Sitka Rocky Gutierrez Airport at or above 3800 then climb direct BKA VORTAC, thence. . . .

. . . .continue climb in BKA VORTAC holding pattern to cross BKA VORTAC at or above MEA for direction of flight before proceeding on course.

BIORKA FOUR DEPARTURE (OBSTACLE)

(BKA4.BKA) 01FEB18

SITKA, ALASKA
SITKA ROCKY GUTIERREZ (SIT) (PASI)

AK, 11 JUL 2024 to 05 SEP 2024

AK, 11 JUL 2024 to 05 SEP 2024