

LOC/DME I-SIT	APP CRS	Rwy Idg	<b>6500</b>
<b>108.9</b>	<b>116°</b>	TDZE	<b>24</b>
Chan <b>26</b>		Apt Elev	<b>27</b>

# LDA RWY 11

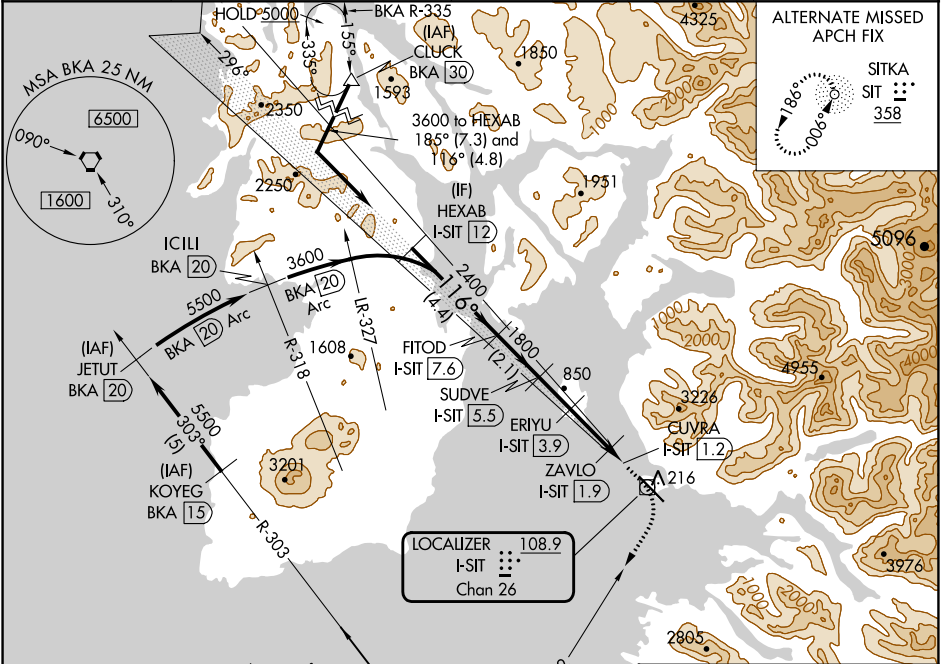
## SITKA ROCKY GUTIERREZ (SIT)(PASI)

DME required.

**⚠** Circling NA northeast of Rwy 11-29.  
**⚠** When local altimeter setting not received, procedure NA.

MISSED APPROACH: Climb to 600 then climbing right turn to 5500 on heading 192° and BKA VORTAC R-012 to BKA VORTAC and hold, continue climb-in-hold to 5500.

AFIS	ANCHORAGE CENTER	SITKA RADIO	UNICOM
<b>135.9</b>	<b>126.1 335.5</b>	<b>123.6 (CTAF) 0 122.2</b>	<b>122.95</b>



ALTERNATE MISSED APCH FIX

SITKA SIT [358]

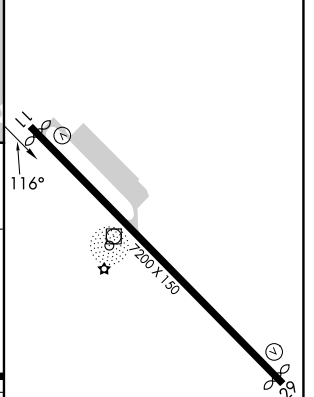
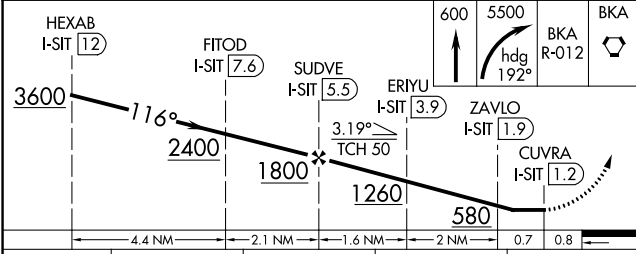
MISSED APCH FIX

Procedure NA for arrival on BKA Vortac airway radial 347.

BIORKA ISLAND 113.8 BKA [113.8] Chan 85

SITKA 358 SIT [358]

ELEV 27	<b>D</b>	TDZE 24
---------	----------	---------



CATEGORY	A	B	C	D
S-11	520-1 496 (500-1)		520-1 3/8 496 (500-1 3/8)	
<b>C</b> CIRCLING	520-1 493 (500-1)		540-1 1/2 513 (600-1 1/2)	1500-3 1473 (1500-3)

REIL Rwy 11 and 29 **Ⓛ**  
 HIRL Rwy 11-29 **Ⓛ**

AK, 11 JUL 2024 to 05 SEP 2024

AK, 11 JUL 2024 to 05 SEP 2024