

APP CRS	Rwy Idg	4899
083°	TDZE	634
	Apt Elev	634

RNAV (GPS) RWY 8

GRIFFITH-MERRILLVILLE (Ø5C)

RNP APCH - GPS.

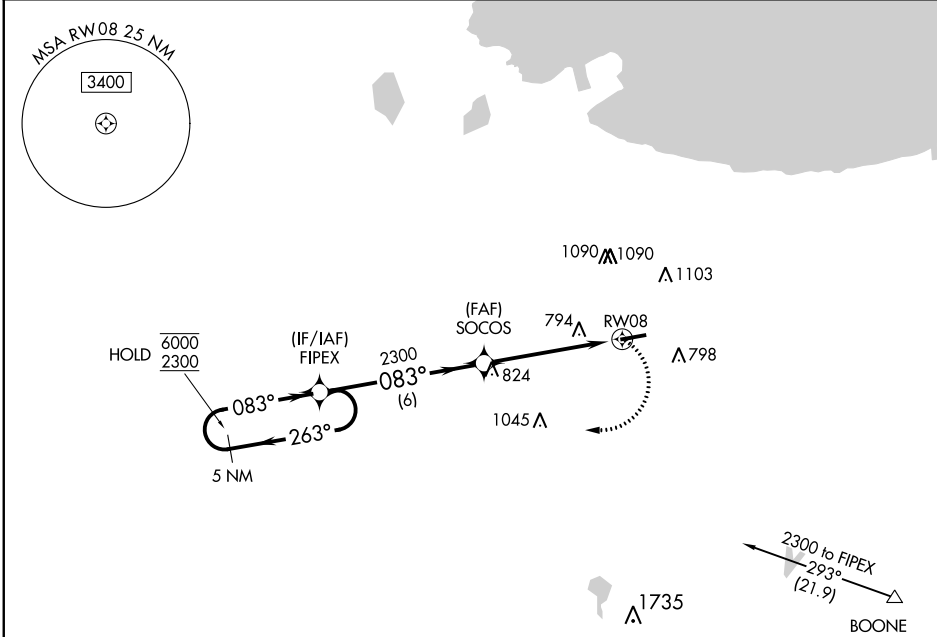
▼ Procedure NA at night. Obtain local altimeter setting on CTAF; when not received, use Chicago Midway Intl altimeter setting and increase all MDAs 60 feet. Rwy 8 helicopter visibility reduction below 1 SM NA.

▲ NA

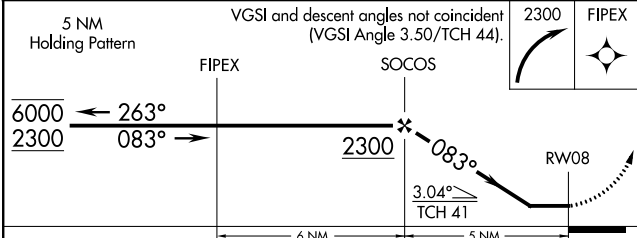
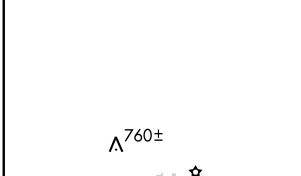
MISSED APPROACH: Climbing right turn to 2300 direct FIPEX and hold.

CHICAGO APP CON
133.1 285.6

UNICOM
123.0 (CTAF) 0



ELEV 634	TDZE 634
----------	----------



CATEGORY	A	B	C	D
LNAY MDA	1080-1	446 (500-1)	NA	
<input checked="" type="checkbox"/> CIRCLING	1200-1	566 (600-1)	NA	

EC-2, 11 JUL 2024 to 08 AUG 2024

EC-2, 11 JUL 2024 to 08 AUG 2024