

(CRIED1 .CRIED) 24193


# CRIED ONE DEPARTURE

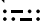
AL-5433 (FAA)

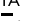
LA PORTE MUNI (T41)  
LA PORTE, TEXAS


CLINC DEL  
125.6  
CTAF  
122.7  
HOUSTON DEP CON  
134.45 284.0

**TOP ALTITUDE:  
ASSIGNED BY ATC**

CEDAR CREEK  
114.8 CGY   
Chan 95

LUFKIN  
112.1 LFK   
Chan 58

NAVASOTA  
115.9 TNV   
Chan 106

HUMBLE  
116.6 IAH   
Chan 113

NOTE: RADAR required.

TAKEOFF MINIMUMS  
Rwys 5, 12, 23, 30: Standard.

(CONTINUED ON FOLLOWING PAGE)

NOTE: Chart not to scale.

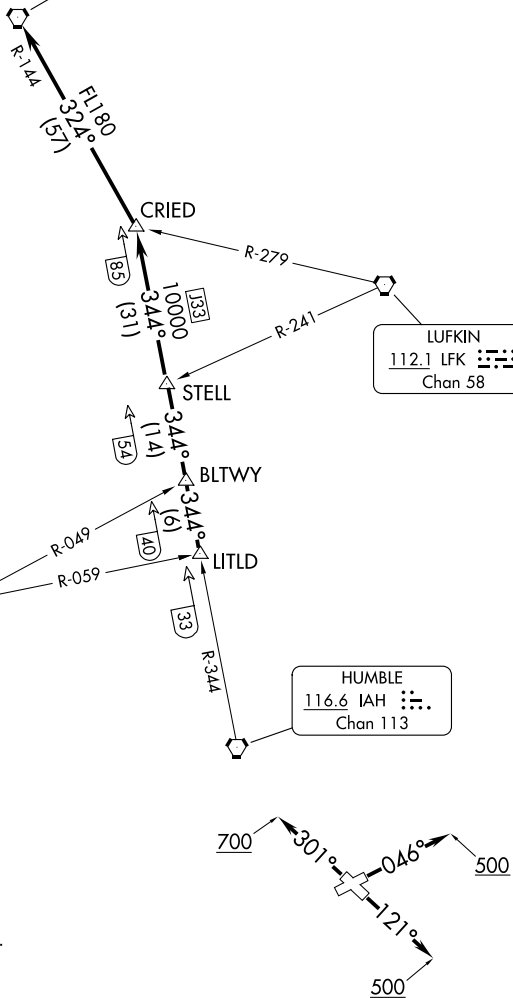
# CRIED ONE DEPARTURE

(CRIED1 .CRIED) 07OCT21

LA PORTE, TEXAS  
LA PORTE MUNI (T41)

SC-5, 11 JUL 2024 to 08 AUG 2024

SC-5, 11 JUL 2024 to 08 AUG 2024



# CRIED ONE DEPARTURE



## DEPARTURE ROUTE DESCRIPTION

TAKEOFF RUNWAY 5: Climb on heading 046° to 500 before turning. When entering controlled airspace, climb on assigned heading for RADAR vectors to LITLD INT. Maintain ATC assigned altitude. Expect filed altitude 10 minutes after departure, thence . . . .

TAKEOFF RUNWAY 12: Climb on heading 121° to 500 before turning. When entering controlled airspace, climb on assigned heading for RADAR vectors to LITLD INT. Maintain ATC assigned altitude. Expect filed altitude 10 minutes after departure, thence . . . .

TAKEOFF RUNWAY 23: When entering controlled airspace, climb on assigned heading for RADAR vectors to LITLD INT. Maintain ATC assigned altitude. Expect filed altitude 10 minutes after departure, thence . . . .

TAKEOFF RUNWAY 30: Climb on heading 301° to 700 before turning. When entering controlled airspace, climb on assigned heading for RADAR vectors to LITLD INT. Maintain ATC assigned altitude. Expect filed altitude 10 minutes after departure, thence . . . .

. . . . on IAH R-344 to STELL INT, then on IAH R-344 to CRIED INT, then left turn on CQY R-144 to CQY VORTAC.

SC-5, 11 JUL 2024 to 08 AUG 2024

SC-5, 11 JUL 2024 to 08 AUG 2024