

LOC I-HYS 111.5	APP CRS 339°	Rwy Idg TDZE Apt Elev	6501 1994 1999
---------------------------	------------------------	-----------------------------	---

ILS or LOC RWY 34

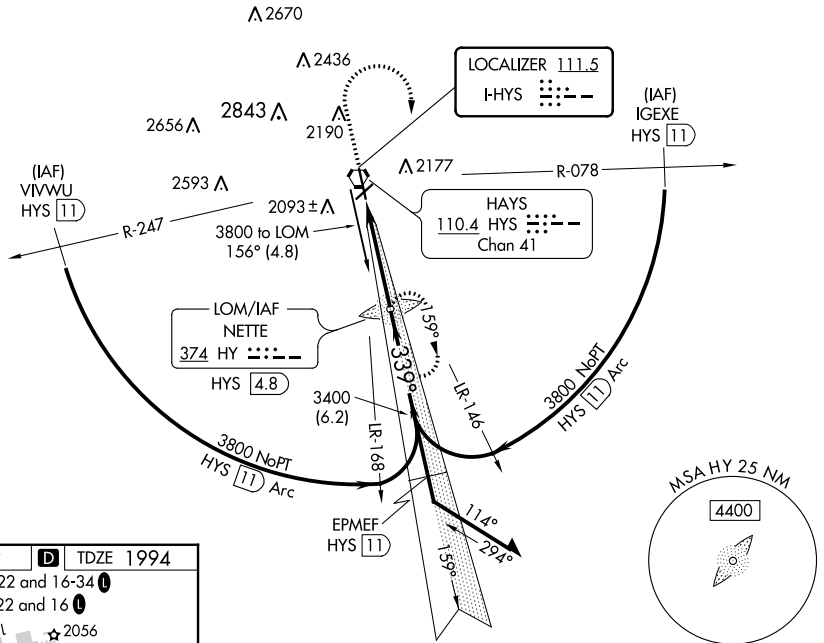
HAYS RGNL (HYS)

⚠ ADF required. Circling NA for Cat D northwest of Rwy 4 and west of Rwy 16.
⚠ NA When local altimeter setting not received, use Russell altimeter setting: increase DA to 2263 feet; increase all MDA 80 feet and visibility S-LOC 34 Cat C and Circling Cat C and D ¼ SM. For inoperative MALSR when using Russell altimeter setting, increase S-ILS all Cats visibility to 1.

MALSR
MISSED APPROACH: Climb to 2600 then climbing right turn to 3800 direct NETTE LOM/HYS 4.8 DME and hold.

AWOS-3PT 125.525	KANSAS CITY CENTER 124.4 322.4	UNICOM 122.8 (CTAF)
----------------------------	--	-------------------------------

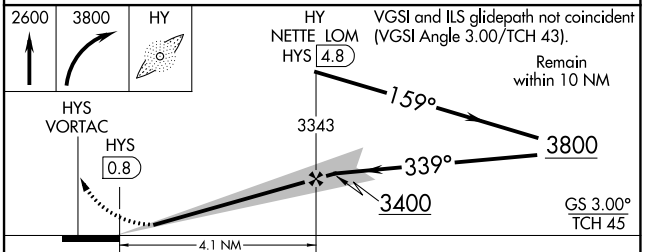
ADF or DME REQUIRED



NC-2, 11 JUL 2024 to 08 AUG 2024

NC-2, 11 JUL 2024 to 08 AUG 2024

ELEV 1999	D	TDZE 1994			
MIRL Rws 4-22 and 16-34		REIL Rws 4, 22 and 16			
FAF to MAP 4.1 NM					
Knots	60	90	120	150	180
Min:Sec	4:06	2:44	2:03	1:38	1:22



CATEGORY	A	B	C	D
S-ILS 34	2194-½ 200 (200-½)			
S-LOC 34	2340-½ 346 (400-½)		2340-¾ 346 (400-¾)	
CIRCLING	2480-1 481 (500-1)		2560-1½ 561 (600-1½) 2680-2¼ 681 (700-2¼)	

HAYS, KANSAS
 Orig-F 27JAN22

38°51'N-99°16'W

ILS or LOC RWY 34

HAYS RGNL (HYS)