

WAAS CH <b>99619</b> <b>W16A</b>	APP CRS <b>159°</b>	Rwy Idg TDZE Apt Elev	<b>6501</b> <b>1999</b> <b>1999</b>
--	------------------------	-----------------------------	---

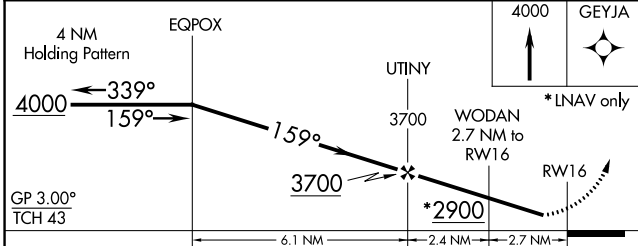
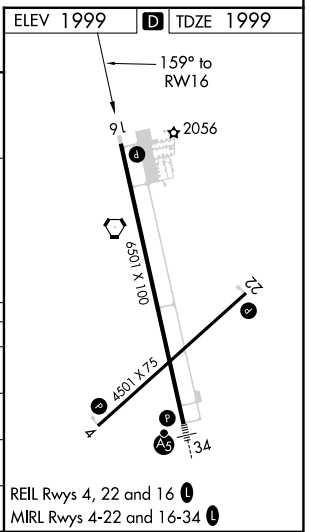
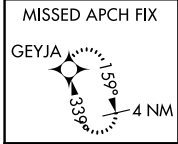
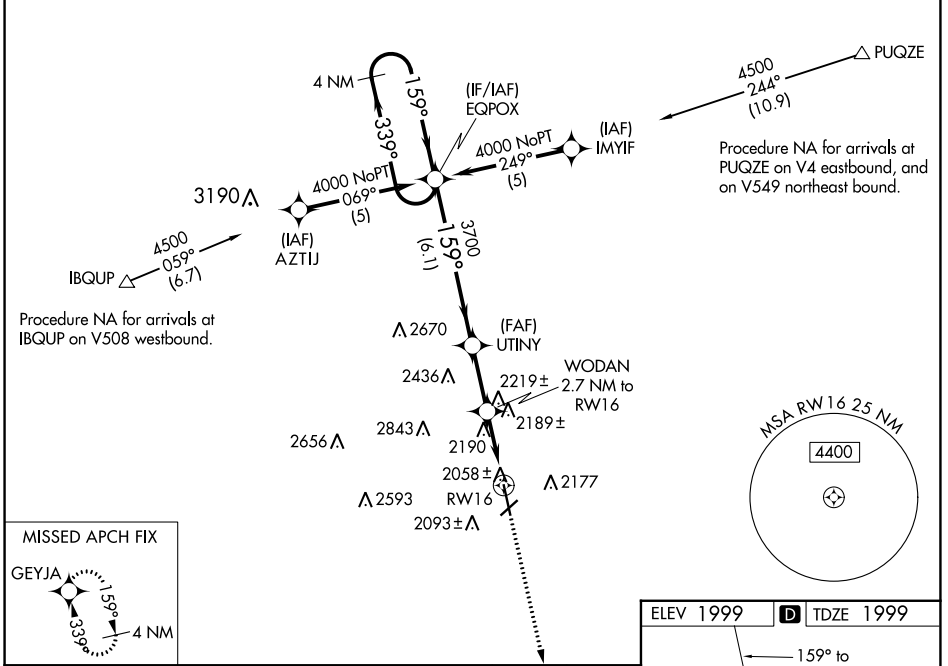
# RNAV (GPS) RWY 16

HAYS RGNL (HYS)

**⚠** For uncompensated Baro-VNAV systems, LNAV/VNAV NA below -18°C (0°F) or above 45°C (113°F).  
**⚠** DME/DME RNP-0.3 NA. Visibility reduction by helicopters NA. When local altimeter setting not received, use Russell altimeter setting: increase LPV DA to 2318 feet; increase LNAV/VNAV DA to 2445 feet and visibility all Cats ½ SM; increase all MDA 80 feet and visibility LNAV and Circling Cat C and D ¼ SM. Baro-VNAV NA when using Russell altimeter setting. Circling NA for Cat D northwest of Rwy 4 and west of Rwy 16.

**MISSED APPROACH:**  
Climb to 4000 direct GEYJA and hold.

AWOS-3PT <b>125.525</b>	KANSAS CITY CENTER <b>124.4 322.4</b>	UNICOM <b>122.8 (CTAF) ①</b>
----------------------------	--	---------------------------------



CATEGORY	A	B	C	D
LPV DA		2249-1	250 (300-1)	
LNAV/VNAV DA		2308-1	309 (400-1)	
LNAV MDA	2440-1	441 (500-1)	2440-1¼ 441 (500-1¼)	2440-1½ 441 (500-1½)
CIRCLING	2480-1	481 (500-1)	2560-1½ 561 (600-1½)	2680-2¼ 681 (700-2¼)

NC-2, 11 JUL 2024 to 08 AUG 2024

NC-2, 11 JUL 2024 to 08 AUG 2024