


VORTAC HYS 110.4 Chan 41	APP CRS 332°	Rwy Idg TDZE Apt Elev	6501 1994 1999
---------------------------------------	------------------------	-----------------------------	---

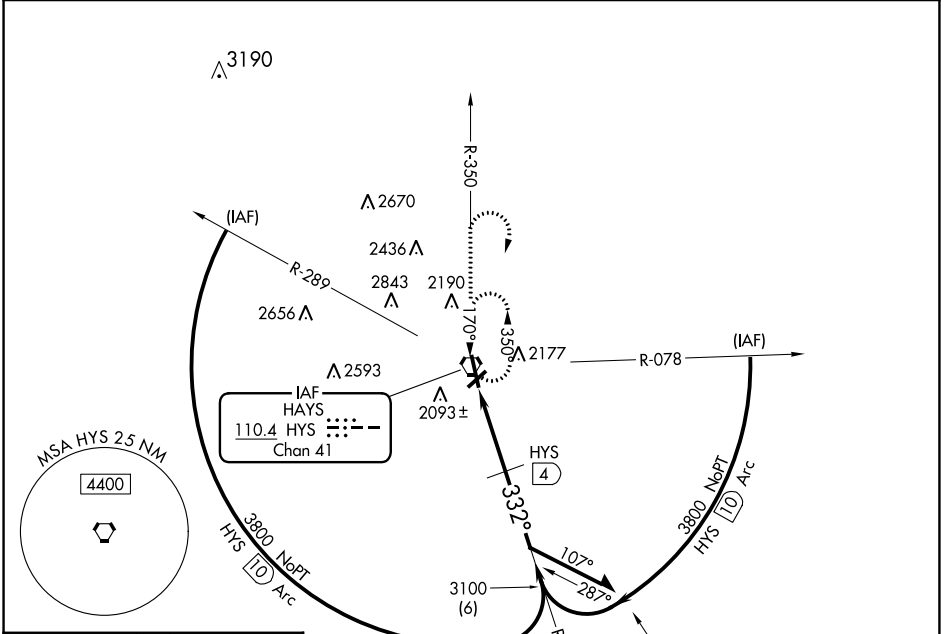
VOR/DME RWY 34

HAYS RGNL (HYS)

When local altimeter setting not received, use Russell altimeter setting: increase all MDA 80 feet and visibility S-34 Cat C and Circling Cat C and D ¼ SM. Circling NA for Cat D northwest of Rwy 4 and west of Rwy 16. VDP NA with Russell altimeter setting. For inop MALS, increase S-34 Cat D visibility to 1 ½ mile.

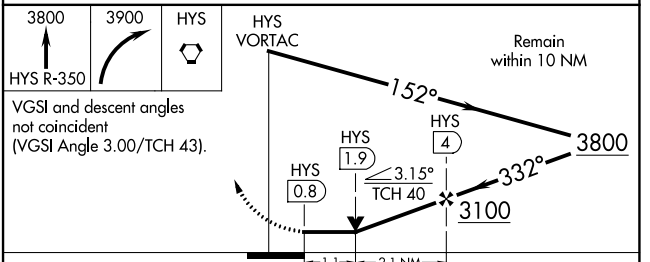
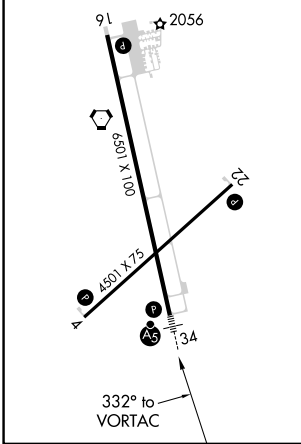
MALS  **MISSED APPROACH:** Climb to 3800 via HYS R-350 then climbing right turn to 3900 direct HYS VORTAC and hold.

AWOS-3PT 125.525	KANSAS CITY CENTER 124.4 322.4	UNICOM 122.8 (CTAF)
----------------------------	--	-------------------------------



ELEV 1999 **D** TDZE 1994

MIRL Rws 4-22 and 16-34 **(1)**
REIL Rws 4, 22 and 16 **(1)**



CATEGORY	A	B	C	D
S-34	2380-1 ½	386 (400-1 ½)		2380-1 386 (400-1)
CIRCLING	2480-1	481 (500-1)	2560-1 ½ 561 (600-1 ½)	2680-2 ¼ 681 (700-2 ¼)

NC-2, 11 JUL 2024 to 08 AUG 2024

NC-2, 11 JUL 2024 to 08 AUG 2024