

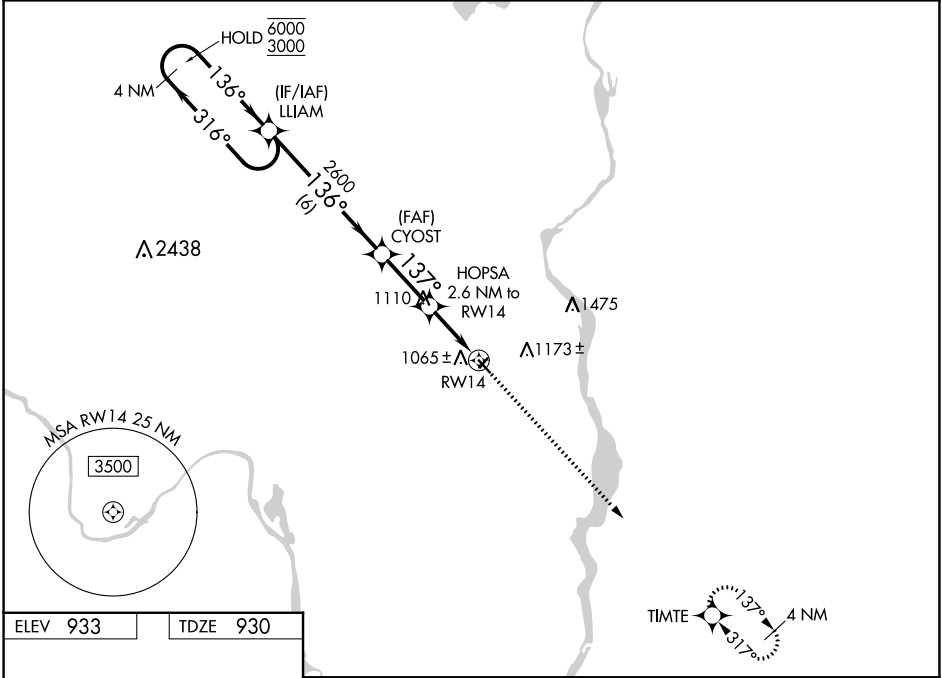
WAAS CH 56345 W14A	APP CRS 137°	Rwy Idg TDZE Apt Elev	3504 930 933
--	------------------------	-----------------------------	---

RNAV (GPS) RWY 14

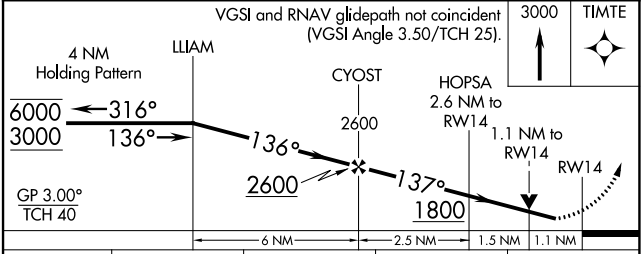
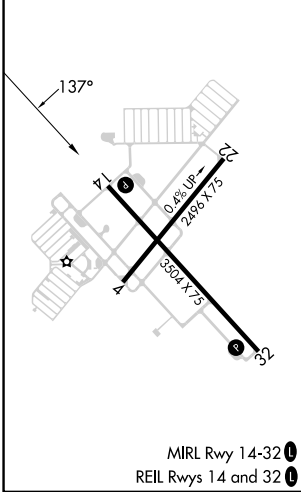
LAKE ELMO (21D)

RNP APCH - GPS.	MISSED APPROACH: Climb 3000 direct TIMTE and hold.
<p>▼ Rwy 14 helicopter visibility reduction below 3/4 SM NA. For uncompensated Baro-VNAV systems, LNAV/VNAV NA below -16°C or above 54°C. Circling Rwy 4, 22 NA at night.</p>	

AWOS-3 120.075	MINNEAPOLIS APP CON 121.2 335.65	CLNC DEL 118.625	UNICOM 122.8 (CTAF) 0
--------------------------	--	----------------------------	---------------------------------



ELEV 933	TDZE 930
----------	----------



CATEGORY	A	B	C	D
LPV DA	1180-1	250 (300-1)		NA
LNAV/VNAV DA	1257-1	327 (400-1)		NA
LNAV MDA	1360-1	430 (500-1)		NA
CIRCLING	1440-1 507 (600-1)	1500-1 567 (600-1)		NA

NC-1, 11 JUL 2024 to 08 AUG 2024

NC-1, 11 JUL 2024 to 08 AUG 2024