

LOC/DME I-HEW <b>110.5</b> Chan <b>42</b>	APP CRS <b>168°</b>	Rwy Idg TDZE Apt Elev	<b>6002</b> <b>152</b> <b>152</b>
---	------------------------	-----------------------------	---

# LOC RWY 17R

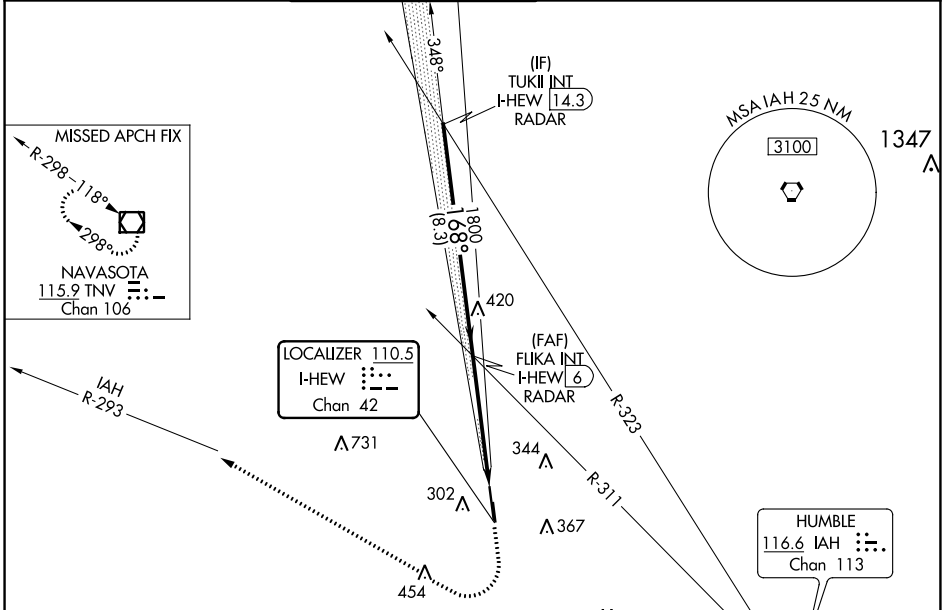
DAVID WAYNE HOOKS MEML (DWH)

RADAR required for procedure entry.

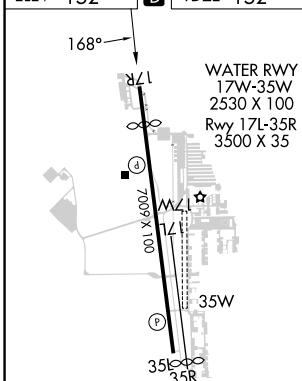
When local altimeter setting not received, use George Bush Intcnl/Houston altimeter setting and increase all MDA 40 feet; increase S-LOC 17R Cats C/D visibility 1/8 mile. Circling NA to Rwys 17W and 35W. Rwy 17R helicopter visibility reduction below 3/4 SM NA. Circling Rwy 35R NA at night.

MISSED APPROACH: Climb to 1200 then climbing right turn to 2000 on heading 325° and IAH VORTAC R-293 to TNV VOR/DME and hold.

ATIS <b>128.375</b>	HOUSTON APP CON <b>119.7 281.4</b>	HOOKS TOWER* <b>127.4 354.1 EAST</b> <b>118.4 (CTAF) 354.1 WEST</b>	GND CON <b>121.8 239.0</b>	CLNC DEL <b>119.45</b>	UNICOM <b>122.95</b>
------------------------	---------------------------------------	---	-------------------------------	---------------------------	-------------------------



ELEV 152	<b>D</b>	TDZE 152
----------	----------	----------

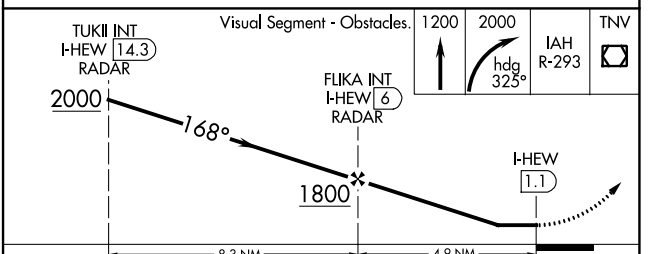


HIRL Rwy 17R-35L  
REIL Rwys 17R and 35L

FAF to MAP 4.9NM

Knots	60	90	120	150	180
Min:Sec	4:54	3:16	2:27	1:58	1:38

**C** CIRCLING



CATEGORY	A	B	C	D
S-LOC 17R	640-1	488 (500-1)	640-1 3/8	488 (500-1 3/8)
<b>C</b> CIRCLING	640-1 488 (500-1)	660-1 508 (600-1)	680-1 1/2 528 (600-1 1/2)	780-2 628 (700-2)

SC-5, 11 JUL 2024 to 08 AUG 2024

SC-5, 11 JUL 2024 to 08 AUG 2024