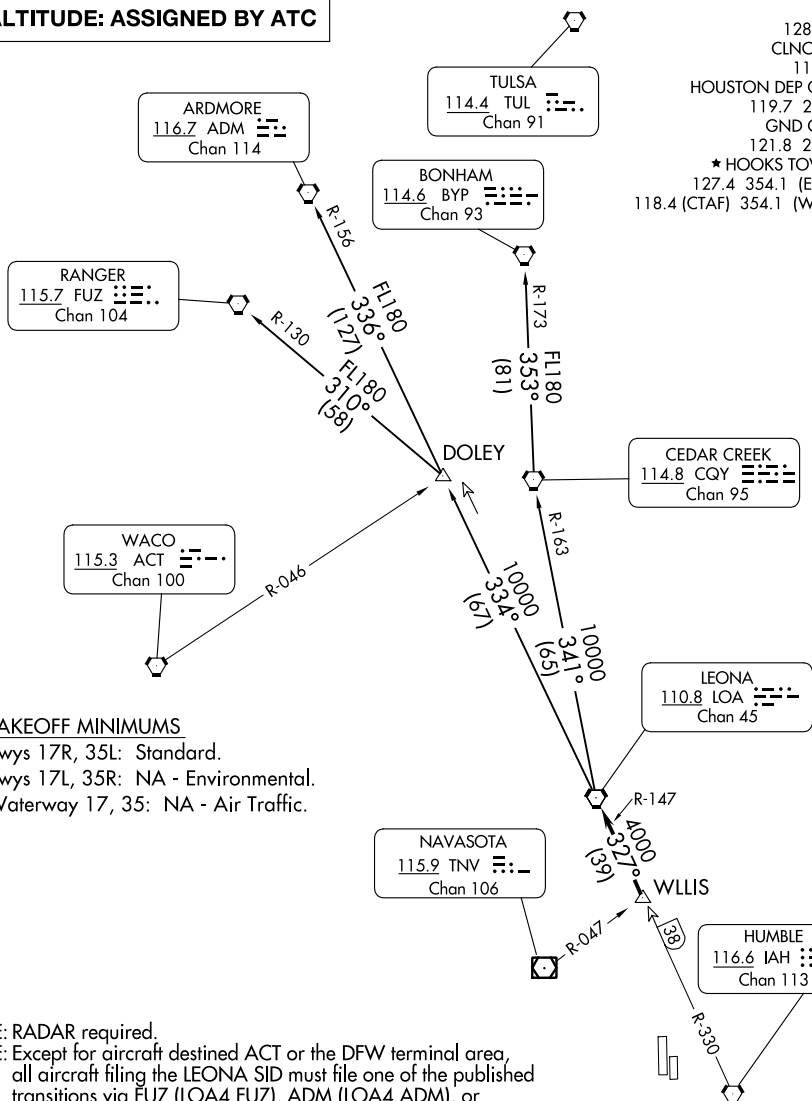


**TOP ALTITUDE: ASSIGNED BY ATC**



### TAKEOFF MINIMUMS

Rwys 17R, 35L: Standard.  
 Rwys 17L, 35R: NA - Environmental.  
 Waterway 17, 35: NA - Air Traffic.

NOTE: RADAR required.

NOTE: Except for aircraft destined ACT or the DFW terminal area, all aircraft filing the LEONA SID must file one of the published transitions via FUZ (LOA4.FUZ), ADM (LOA4.ADM), or BYP (LOA4.BYP).

NOTE: RANGER TRANSITION: For aircraft overflying west/northwest of the DFW terminal area FL240 and above.

NOTE: ARDMORE TRANSITION: For aircraft overflying north/northwest of the DFW terminal area FL240 and above.

NOTE: BONHAM TRANSITION: For aircraft overflying/landing TUL VORTAC FL240 and above.

NOTE: Chart not to scale.

(CONTINUED ON FOLLOWING PAGE)

SC-5, 11 JUL 2024 to 08 AUG 2024

SC-5, 11 JUL 2024 to 08 AUG 2024



DEPARTURE ROUTE DESCRIPTION

TAKEOFF ALL RUNWAYS: When entering controlled airspace, climb on assigned heading for RADAR vectors to WLLIS INT. Maintain ATC assigned altitude. Expect filed altitude 10 minutes after departure, thence . . . .

. . . . on LOA R-147 to LOA VORTAC.

ARDMORE TRANSITION (LOA4.ADM): From over LOA VORTAC on LOA R-334 to DOLEY INT, then on ADM R-156 to ADM VORTAC.

BONHAM TRANSITION (LOA4.BYP): From over LOA VORTAC on LOA R-341 and CQY R-163 to CQY VORTAC, then on BYP R-173 to BYP VORTAC.

RANGER TRANSITION (LOA4.FUZ): From over LOA VORTAC on LOA R-334 to DOLEY INT, then on FUZ R-130 to FUZ VORTAC.

SC-5, 11 JUL 2024 to 08 AUG 2024

SC-5, 11 JUL 2024 to 08 AUG 2024