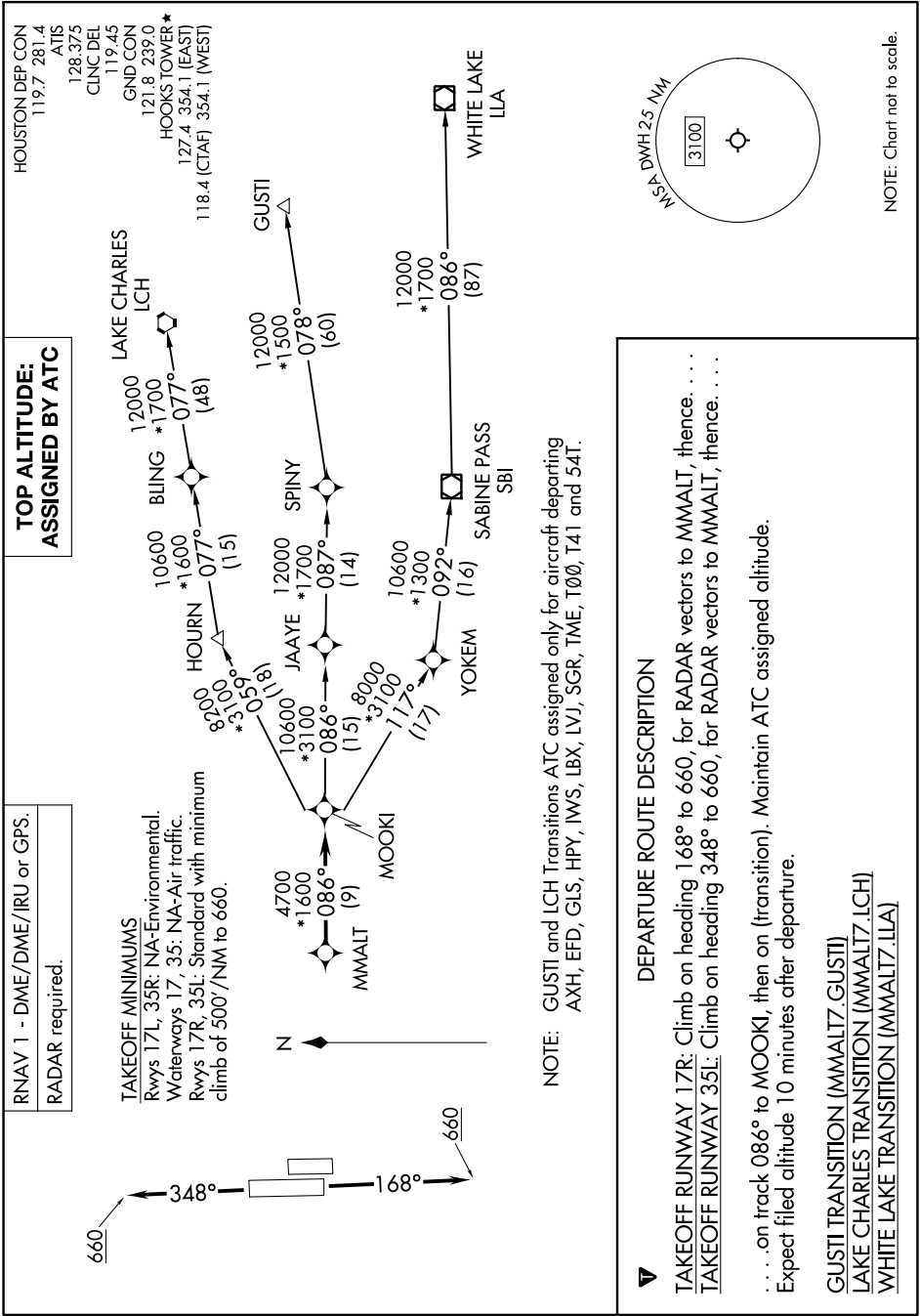


# MMALT SEVEN DEPARTURE (RNAV)

AL-5457 (FAA)

HOUSTON, TEXAS

SC-5, 11 JUL 2024 to 08 AUG 2024



**TOP ALTITUDE:  
ASSIGNED BY ATC**

RNAV 1 - DME/DME/RU or GPS.  
RADAR required.

**TAKEOFF MINIMUMS**  
Rwys 17L, 35R: NA-Environmental.  
Waterways 17, 35: NA-Air traffic.  
Rwys 17R, 35L: Standard with minimum  
climb of 500'/NM to 660.

HOUSTON DEP CON  
119.7 281.4  
ATIS  
128.375  
CLNC DEL  
119.45  
GND CON  
121.8 239.0  
HOOKS TOWER\*  
127.4 354.1 (EAST)  
118.4 (CTAF) 354.1 (WEST)

**DEPARTURE ROUTE DESCRIPTION**

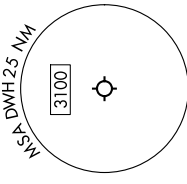
**TAKEOFF RUNWAY 17R:** Climb on heading 168° to 660, for RADAR vectors to MMALT, thence. . . .

**TAKEOFF RUNWAY 35L:** Climb on heading 348° to 660, for RADAR vectors to MMALT, thence. . . .

. . . on track 086° to MOOKI, then on (transition). Maintain ATC assigned altitude.  
Expect filed altitude 10 minutes after departure.

**GUSTI TRANSITION (MMALT7.GUSTI)**  
**LAKE CHARLES TRANSITION (MMALT7.LCH)**  
**WHITE LAKE TRANSITION (MMALT7.LLA)**

NOTE: GUSTI and LCH Transitions ATC assigned only for aircraft departing AXH, EFD, GLS, HPY, IWS, LBX, LVJ, SGR, TME, T00, T41 and 54T.



NOTE: Chart not to scale.