

HOUSTON, TEXAS

AL-5457 (FAA)

23110

WAAS CH <b>45603</b> <b>W35A</b>	APP CRS <b>348°</b>	Rwy ldg <b>6700</b> TDZE <b>152</b> Apt Elev <b>152</b>
--	------------------------	---

# RNAV (GPS) RWY 35L

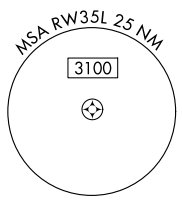
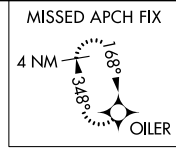
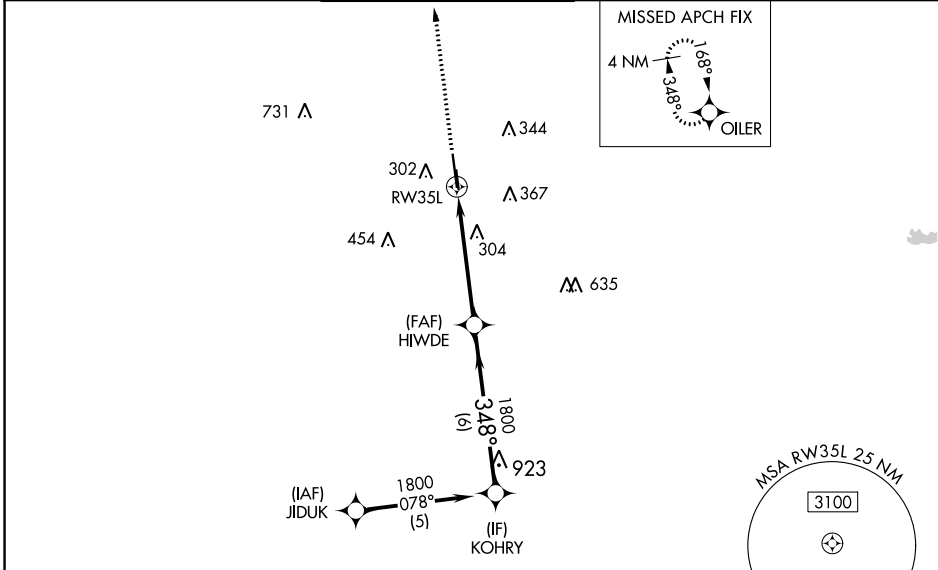
DAVID WAYNE HOOKS MEML (DWH)

RNP APCH-GPS.

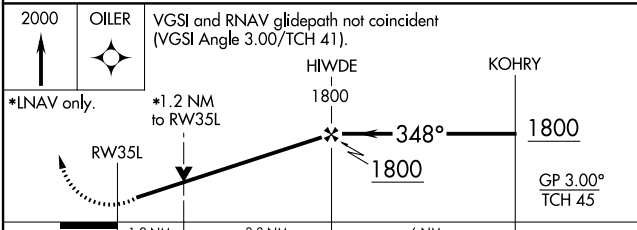
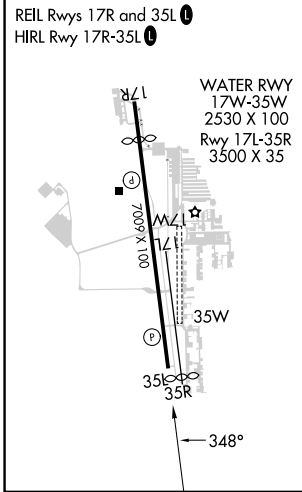
▼ Baro-VNAV and VDP NA when using George Bush Intcntl/Houston altimeter setting.  
 ▲ For uncompensated Baro-VNAV systems, LNAV/VNAV NA below -4°C or above 54°C.  
 ▲ When local altimeter setting not received, use George Bush Intcntl/Houston altimeter setting and increase all DA 36 feet and all MDA 40 feet, increase LPV and LNAV/VNAV visibility all Cats ¼ mile, LNAV visibility Cats C/D ¼ mile. Rwy 35L helicopter visibility reduction below ¾ SM NA. Circling NA to Rwys 17W and 35W. Circling Rwy 35R NA at night.

MISSED APPROACH:  
Climb to 2000 direct OILER and hold.

ATIS <b>128.375</b>	HOUSTON APP CON <b>119.7 281.4</b>	HOOKS TOWER* <b>127.4 354.1 (EAST)</b> <b>118.4 (CTAF) 0 354.1 (WEST)</b>	GND CON <b>121.8 239.0</b>	CLNC DEL <b>119.45</b>	UNICOM <b>122.95</b>
------------------------	---------------------------------------	---	-------------------------------	---------------------------	-------------------------



ELEV <b>152</b>	<b>D</b>	TDZE <b>152</b>
-----------------	----------	-----------------



CATEGORY	A	B	C	D
LPV DA		451-1	299 (300-1)	
LNAV/ VNAV DA		552-1 3/8	400 (400-1 1/8)	
LNAV MDA	560-1	408 (500-1)	560-1 1/8	408 (500-1 1/8)
<b>C</b> CIRCLING	640-1 488 (500-1)	660-1 508 (600-1)	680-1 1/2 528 (600-1 1/2)	780-2 628 (700-2)

HOUSTON, TEXAS  
Amdt 1F 20APR23

30°04'N-95°33'W

# DAVID WAYNE HOOKS MEML (DWH) RNAV (GPS) RWY 35L

SC-5, 11 JUL 2024 to 08 AUG 2024

SC-5, 11 JUL 2024 to 08 AUG 2024