

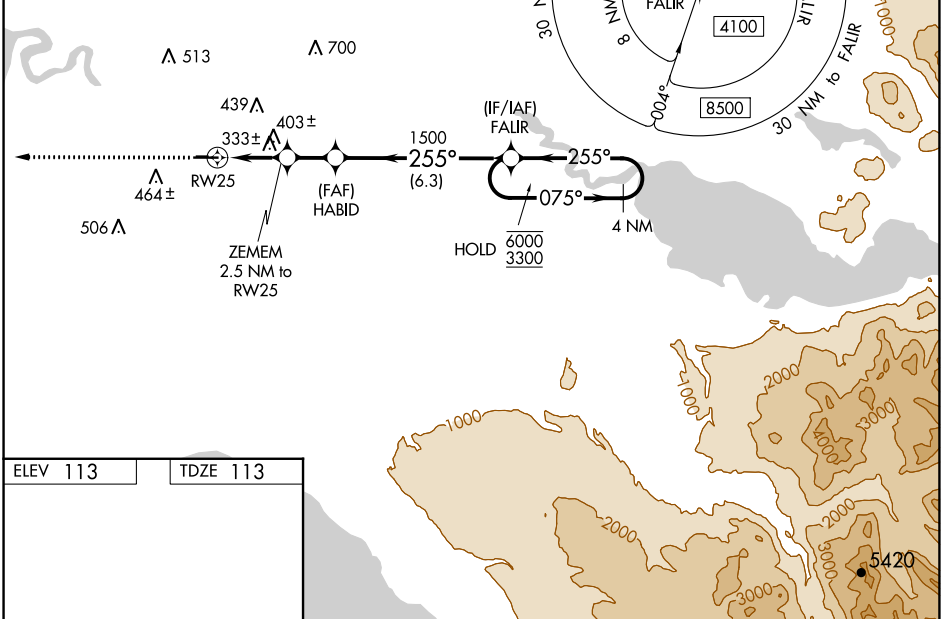
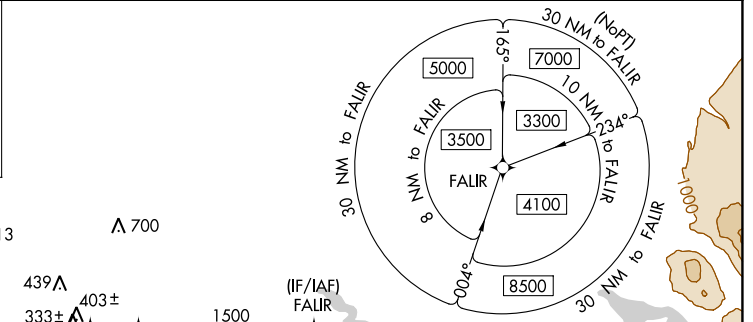
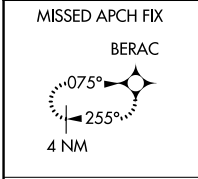
WAAS CH <b>86236</b> <b>W25A</b>	APP CRS <b>255°</b>	Rwy Idg <b>5001</b> TDZE <b>113</b> Apt Elev <b>113</b>
--	------------------------	---

# RNAV (GPS) RWY 25

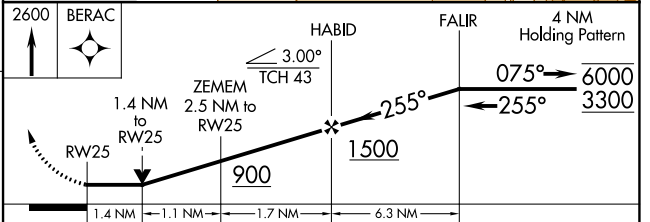
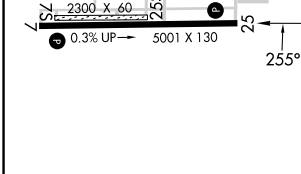
SOLDOTNA (SXQ)(PASX)

RNP APCH.	<p>⚠ Circling NA to Rwy 7S and 25S. Circling Rwy 7 NA at night.          ⚠ Rwy 25 helicopter visibility reduction below 3/4 SM NA.</p>	MISSED APPROACH: Climb to 2600 direct BERAC and hold.

AWOS-3P <b>135.45</b>	ANCHORAGE CENTER <b>125.7 379.1</b>	KENAI RADIO <b>122.35</b>	CTAF <b>122.50</b>
--------------------------	--	------------------------------	-----------------------



ELEV 113	TDZE 113
----------	----------



CATEGORY	A	B	C	D
LP MDA	600-1	487 (500-1)	600-1 <sup>3</sup> / <sub>8</sub>	487 (500-1 <sup>3</sup> / <sub>8</sub> )
LNAV MDA	660-1	547 (600-1)	660-1 <sup>5</sup> / <sub>8</sub>	547 (600-1 <sup>5</sup> / <sub>8</sub> )
<input checked="" type="checkbox"/> CIRCLING	740-1 627 (700-1)	780-1 667 (700-1)	820-2 707 (800-2)	980-2 <sup>3</sup> / <sub>4</sub> 867 (900-2 <sup>3</sup> / <sub>4</sub> )

AK, 11 JUL 2024 to 05 SEP 2024

AK, 11 JUL 2024 to 05 SEP 2024