

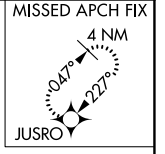
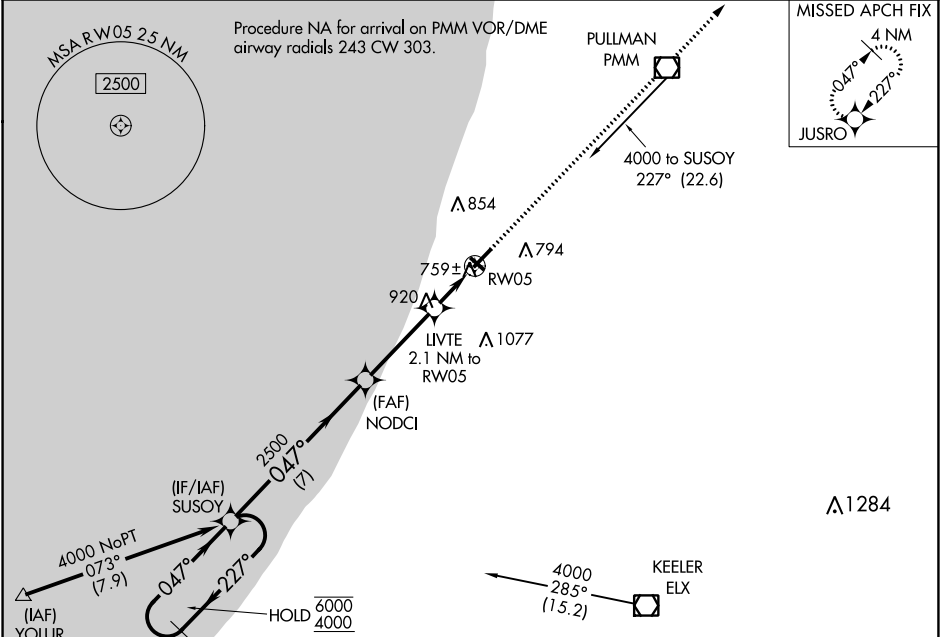
APP CRS	Rwy Idg	<b>4800</b>
<b>047°</b>	TDZE	<b>659</b>
	Apt Elev	<b>666</b>

# RNAV (GPS) RWY 5

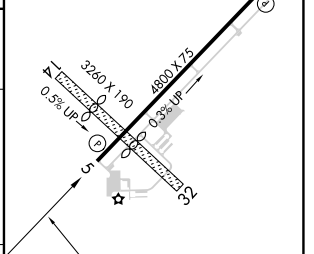
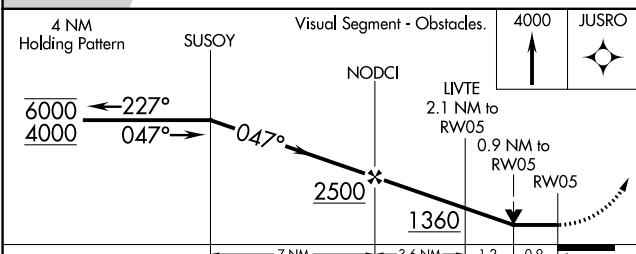
SOUTH HAVEN AREA RGNL (LWA)

RNP APCH.	MISSED APPROACH: Climb to 4000 direct JUSRO and hold, continue climb-in-hold to 4000.
<p>▼ Circling NA to Rwys 14 and 32.</p> <p>▲ Rwy 5 helicopter visibility reduction below 3/4 SM NA.</p>	

AWOS-3 <b>118.025</b>	SOUTH BEND APP CON* <b>118.55 257.8</b>	UNICOM <b>122.8 (CTAF)</b>
--------------------------	--------------------------------------------	-------------------------------



ELEV 666	TDZE 659
----------	----------



CATEGORY	A	B	C	D
LNVA MDA	1020-1 361 (400-1)			
CIRCLING	1120-1 454 (500-1)	1140-1 474 (500-1)	1440-2 1/4 774 (800-2 1/4)	1440-2 1/2 774 (800-2 1/2)

REIL Rwys 5 and 23

MIRL Rwy 5-23

EC-1, 11 JUL 2024 to 08 AUG 2024

EC-1, 11 JUL 2024 to 08 AUG 2024