

WAAS CH 86308 W35A	APP CRS 347°	Rwy Idg TDZE Apt Elev	3828 698 698
--	------------------------	-----------------------------	---

RNAV (GPS) RWY 35

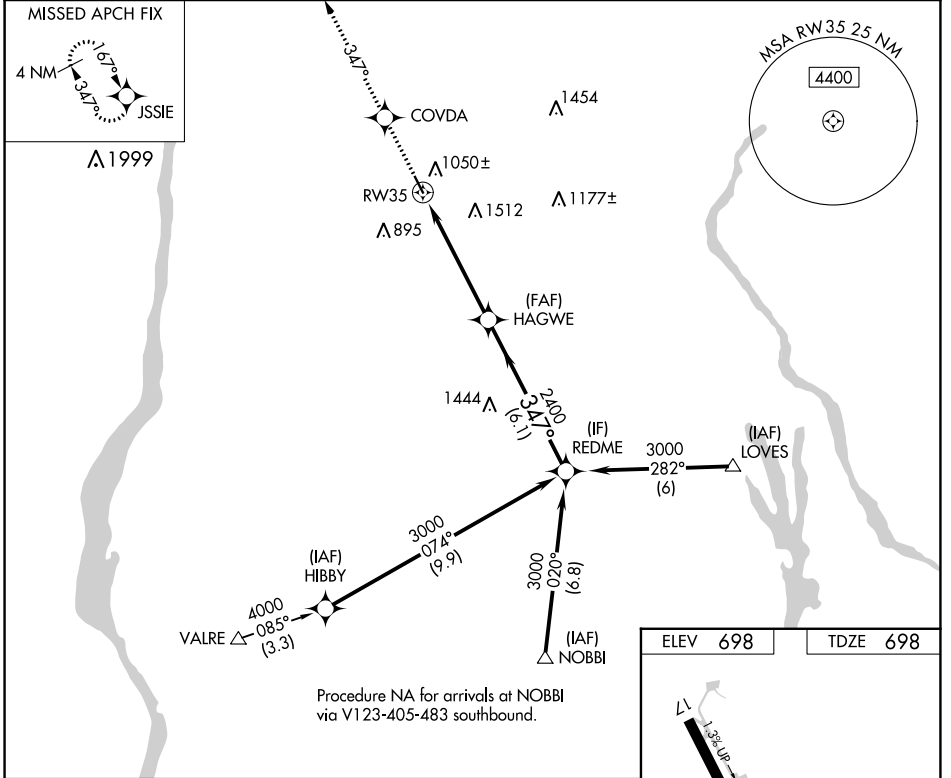
SKY ACRES (44N)

RNP APCH.

▼
▲ NA Use Newburgh altimeter setting; when not received use Poughkeepsie altimeter setting and increase LPV DA to 1063, and all MDA 20 feet.
☒ -23°C

MISSED APPROACH: Climb to 3000 direct COVDA and via 347° track to JSSIE and hold.

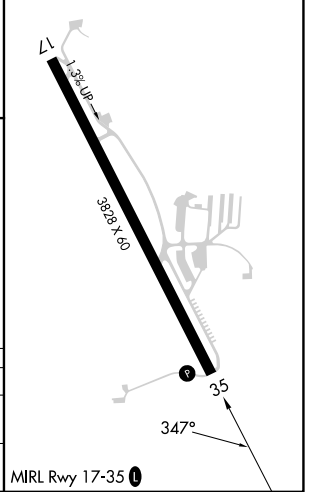
SWF ASOS 124.575	POU ASOS 126.75	NEW YORK APP CON 132.75 363.1	UNICOM 122.8 (CTAF) 0
----------------------------	---------------------------	---	---------------------------------



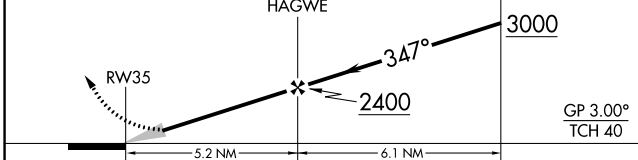
NE-2, 11 JUL 2024 to 08 AUG 2024

NE-2, 11 JUL 2024 to 08 AUG 2024

ELEV 698	TDZE 698
----------	----------



3000	COVDA	fr 347°	JSSIE	VGSI and RNAV glidepath not coincident (VGSI Angle 3.00/TCH 33).	REDME	Procedure Turn NA
------	-------	---------	-------	--	-------	-------------------



CATEGORY	A	B	C	D
LPV DA	1046-1¼	348 (400-1¼)		NA
INAV MDA	1700-1¼ 1002 (1100-1¼)	1700-1½ 1002 (1100-1½)		NA