

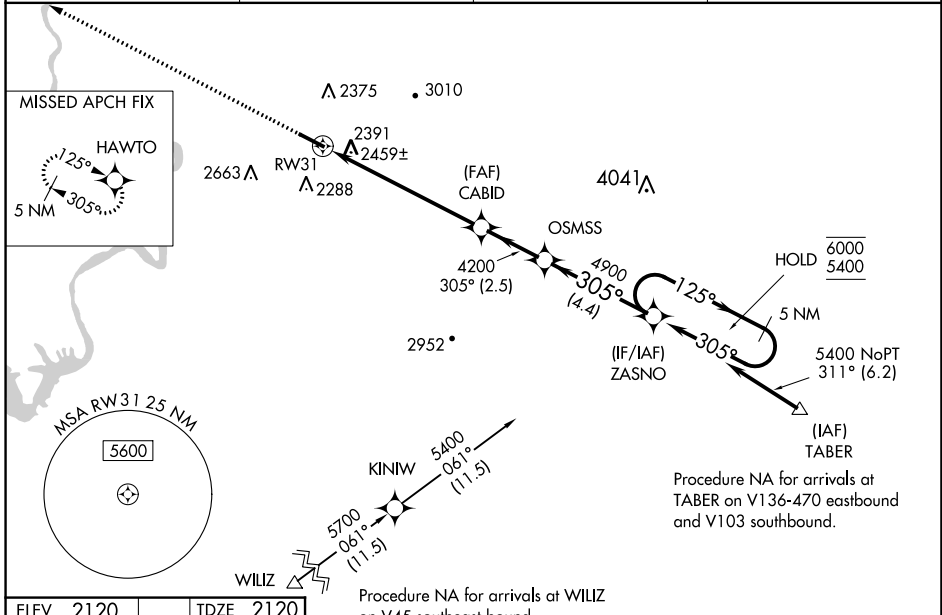
WAAS CH 86743 W31A	APP CRS 305°	Rwy Idg TDZE Apt Elev	5501 2120 2120
--	------------------------	-----------------------------	---

RNAV (GPS) RWY 31

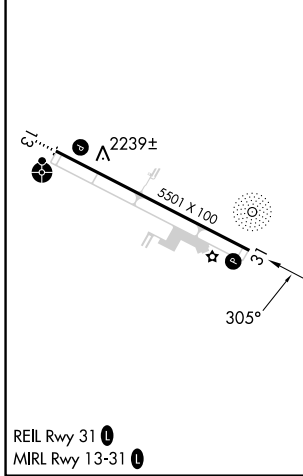
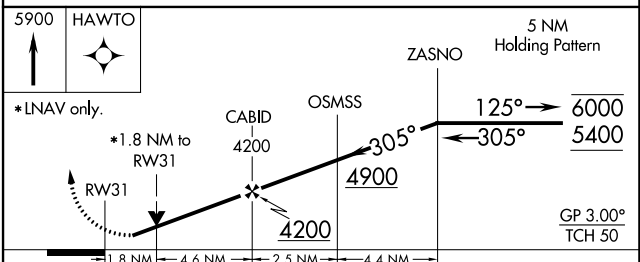
VIRGINIA TECH/MONTGOMERY EXEC (BCB)

RNP APCH.	MISSED APPROACH: Climb to 5900 direct HAWTO and hold, continue climb-in-hold to 5900.
<p>▼ Rwy 31 helicopter visibility reduction below $\frac{3}{4}$ SM NA.</p> <p>▲ For uncompensated Baro-VNAV systems, LNAV/VNAV NA below -19°C or above 54°C.</p>	

AWOS-3 133.325	ROANOKE APP CON 126.9 339.8	CLNC DEL 124.85	UNICOM 123.05 (CTAF) 0
--------------------------	---------------------------------------	---------------------------	----------------------------------



ELEV 2120	TDZE 2120
-----------	-----------



CATEGORY	A	B	C	D
LPV DA	2412- $\frac{7}{8}$	292 (300- $\frac{7}{8}$)		NA
LNAV/VNAV DA	2740-1 $\frac{3}{4}$	620 (700-1 $\frac{3}{4}$)		NA
LNAV MDA	2740-1	620 (700-1)	2740-1 $\frac{3}{4}$ 620 (700-1 $\frac{3}{4}$)	NA
C CIRCLING	2760-1 640 (700-1)	2820-1 700 (700-1)	2980-2 $\frac{1}{2}$ 860 (900-2 $\frac{1}{2}$)	NA

NE-3, 11 JUL 2024 to 08 AUG 2024

NE-3, 11 JUL 2024 to 08 AUG 2024