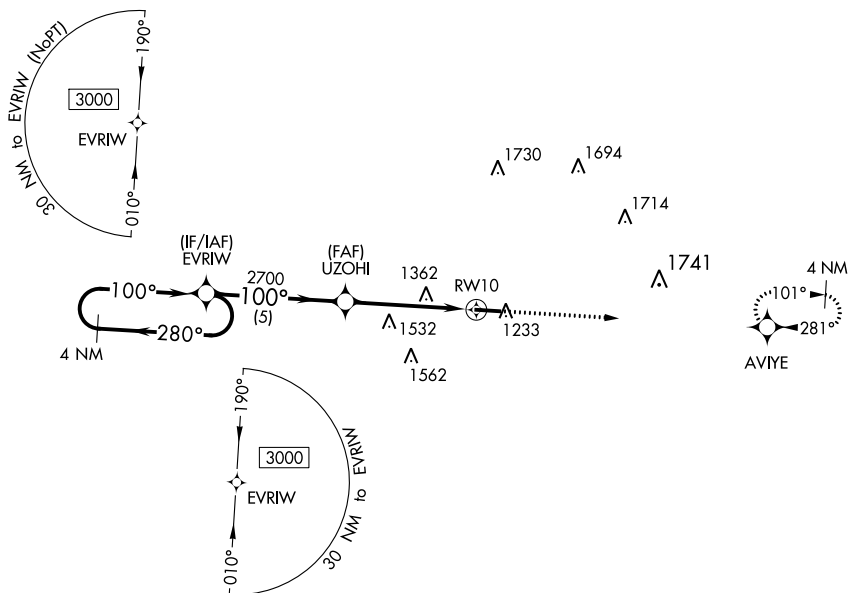


WAAS CH 77534 W10A	APP CRS 100°	Rwy Idg TDZE Apt Elev	5000 1172 1184
--	------------------------	-----------------------------	---

RNAV (GPS) RWY 10

HILLSDALE MUNI (JYM)

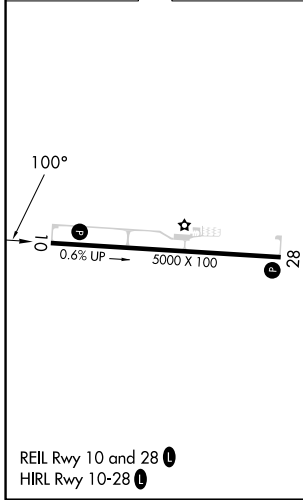
<p>▽ For uncompensated Baro-VNAV systems, LNAV/VNAV NA below -17°C (2°F) or above 54°C (130°F). DME/DME RNP-0.3 NA.</p>		<p>MISSED APPROACH: Climb to 3100 direct AVIYE and hold.</p>
<p>AWOS-3 121.025</p>	<p>TOLEDO APP CON 134.35 317.55</p>	<p>UNICOM 122.8 (CTAF) 0</p>



EC-1, 11 JUL 2024 to 08 AUG 2024

EC-1, 11 JUL 2024 to 08 AUG 2024

ELEV 1184	TDZE 1172
-----------	-----------



<p>4 NM Holding Pattern</p>		<p>3100 AVIYE</p>		
<p>EVRIW</p>		<p>UZOHI</p>		
<p>3000 ← 280° / 100° →</p>		<p>2700 *1.6 NM to RWY10</p>		
<p>GP 3.00° TCH 46</p>		<p>RWY10</p>		
<p>5 NM</p>		<p>3.1 NM</p>		
<p>1.6 NM</p>		<p>*LNAV only</p>		
CATEGORY	A	B	C	D
LPV DA	1441-1 269 (300-1)			NA
LNAV/VNAV DA	1601-1½ 429 (500-1½)			NA
LNAV MDA	1720-1	548 (600-1)	1720-1⅝ 548 (600-1⅝)	NA
C CIRCLING	1720-1	536 (600-1)	1720-1⅝ 536 (600-1⅝)	NA