

LOC/DME I-MDK 111.75 Chan 54 (Y)	APP CRS 168°	Rwy ldg 8605 TDZE 27 Apt Elev 27
---	------------------------	---

ILS RWY 17L (SA CAT II)

SACRAMENTO INTL (SMF)

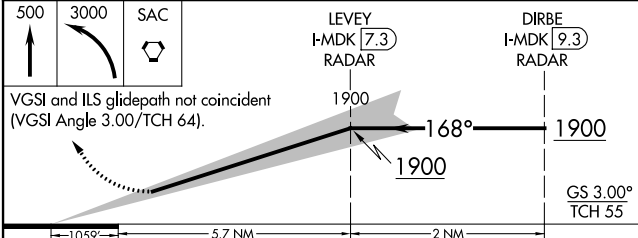
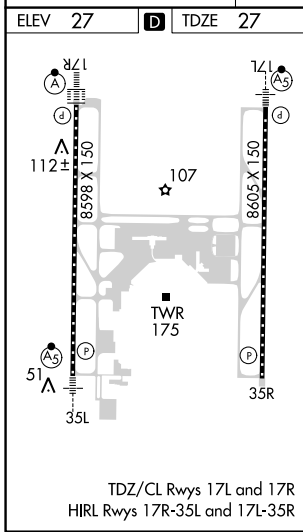
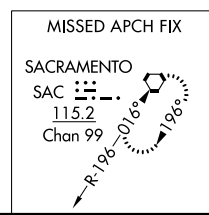
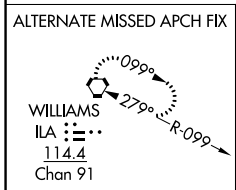
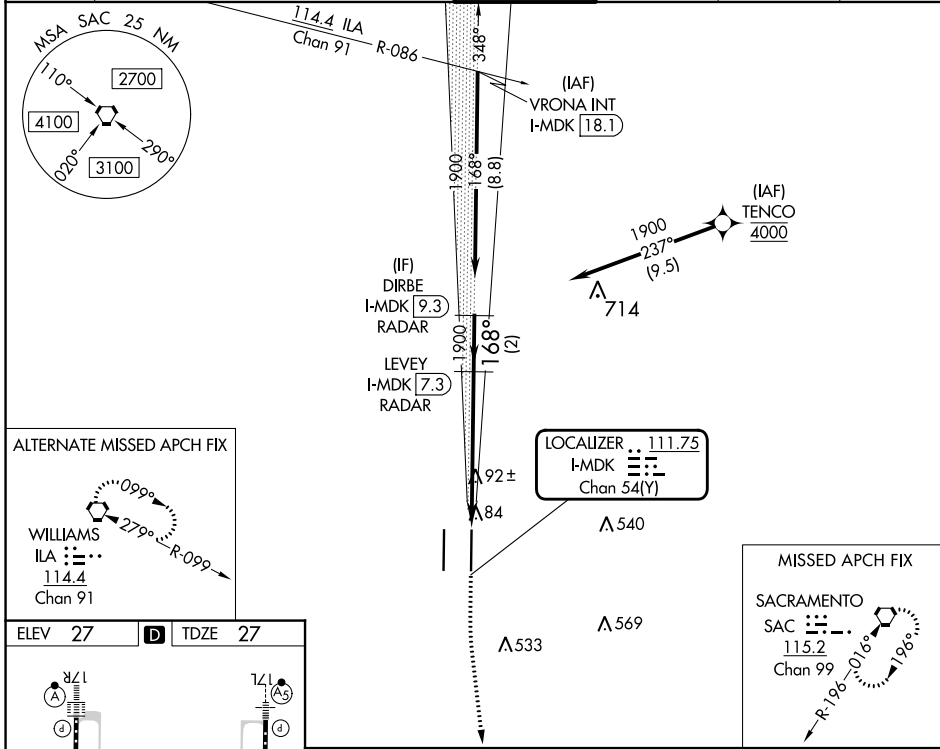
Aircraft not GPS equipped - RADAR required for procedure entry.
DME or RADAR required. RNP APCH-GPS. From TENCO.

Simultaneous approach authorized.
Requires specific OPSPEC, MSPEC or LOA approval.



MISSED APPROACH: Climb to 500 then climbing left turn to 3000 direct SAC VORTAC and hold.

D-ATIS 126.75	NORCAL APP CON 125.4 259.1 (W-NE) 127.4 317.5 (E-SE)	125.25 257.9 (SW)	CAPITOL TOWER 125.7 256.7	GND CON 121.7 256.7	CLNC DEL 121.1 256.7	CPDLC
-------------------------	--	--------------------------	-------------------------------------	-------------------------------	--------------------------------	-------



CATEGORY	A	B	C	D
S-ILS 17L	RA 108/12 100 DA 127			

SA CATEGORY II ILS-SPECIAL AIRCREW & AIRCRAFT CERTIFICATION REQUIRED

SW-2, 11 JUL 2024 to 08 AUG 2024

SW-2, 11 JUL 2024 to 08 AUG 2024