

LOC/DME I-SMF 111.1 Chan 48	APP CRS 168°	Rwy ldg 8598 TDZE 25 Apt Elev 27
--	------------------------	---

ILS or LOC RWY 17R

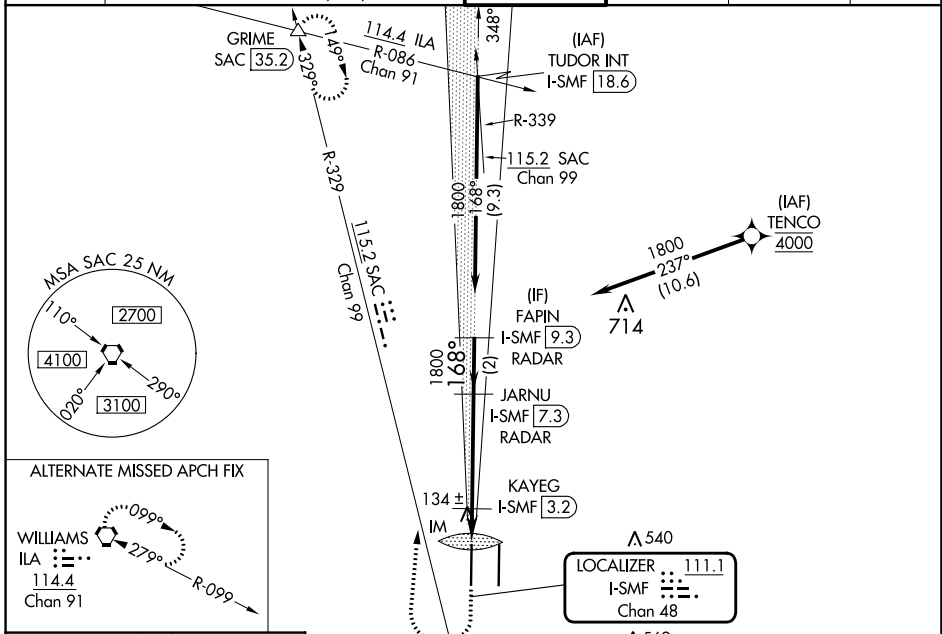
SACRAMENTO INTL (SMF)

Aircraft not GPS equipped - RADAR required for procedure entry.
DME or RADAR required. RNP APCH-GPS. From TENCO.

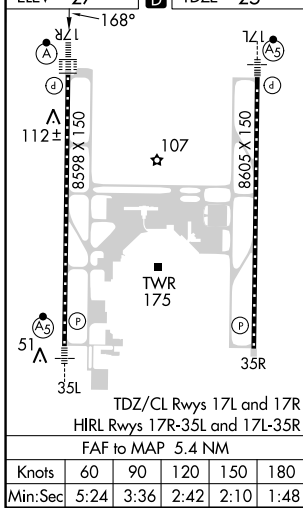
Simultaneous approach authorized.
Circling NA east of Rwy 17R-35L.

ALSIF-2
MISSED APPROACH: Climb to 500 then climbing right turn to 2000 on heading 350° and SAC VORTAC R-329 to GRIME INT/SAC 35.2 DME and hold.

D-ATIS 126.75	NORCAL APP CON 125.4 259.1 (W-NE) 125.25 257.9 (SW) 127.4 317.5 (E-SE)	CAPITOL TOWER 125.7 256.7	GND CON 121.7 256.7	CLNC DEL 121.1 256.7	CPDLC
-------------------------	--	-------------------------------------	-------------------------------	--------------------------------	-------



ALTERNATE MISSED APCH FIX



ELEV 27	TDZE 25	500	2000	SAC R-329	GRIME	VGSI and ILS glidepath not coincident (VGSI Angle 3.00/TCH 72).	
				JARNU I-SMF (7.3) RADAR	FAPIN I-SMF (9.3) RADAR		
CATEGORY	A	B	C	D			
S-ILS 17R	225/18		200 (200-½)				
S-LOC 17R	480/24	455 (500-½)		480/45	455 (500-¾)		
CIRCLING	480-1	453 (500-1)		480-1½	453 (500-1½)		580-2
KAYEG FIX MINIMUMS (DME REQUIRED)							
S-LOC 17R	400/24	375 (400-½)		400/35	375 (400-¾)		
CIRCLING	440-1	480-1		480-1½	453 (500-1½)		580-2
	413 (500-1)	453 (500-1)		453 (500-1½)	553 (600-2)		

SW-2, 11 JUL 2024 to 08 AUG 2024

SW-2, 11 JUL 2024 to 08 AUG 2024