

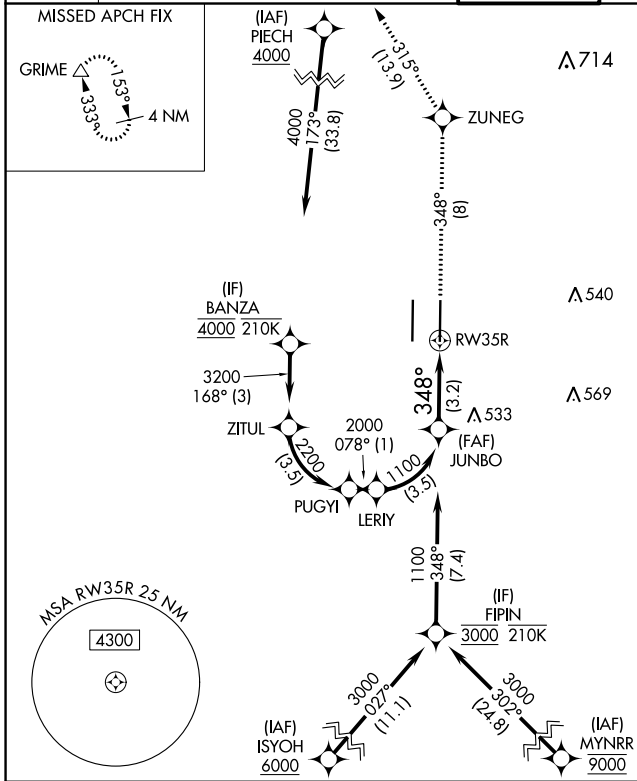
APP CRS 348°	Rwy Idg TDZE Apt Elev	8605 24 27
------------------------	-----------------------------	---------------------------------------

RNAV (RNP) Z RWY 35R

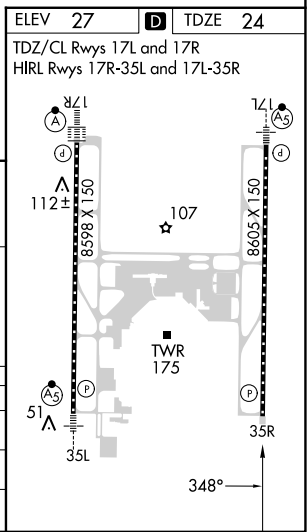
SACRAMENTO INTL (SMF)

RNP AR APCH-GPS.	MISSED APPROACH: Climb to 2000 on track 348° to ZUNEG and on track 315° to GRIME and hold.
<p>▼ For uncompensated Baro-VNAV systems, procedure NA below -2°C or above 54°C.</p>	

D-ATIS 126.75	NORCAL APP CON 125.4 259.1 (W-NE) 125.25 257.9 (SW) 127.4 317.5 (E-SE)	CAPITOL TOWER 125.7 256.7	GND CON 121.7 256.7	CLNC DEL 121.1 256.7	CPDLC
-------------------------	--	-------------------------------------	-------------------------------	--------------------------------	-------



JUNBO 1100	2000	ZUNEG	tr 315°	GRIME Δ
1100	↑ tr 348°			
GP 3.00° TCH 64	See planview for multiple IF locations.			
3.2 NM				
CATEGORY	A	B	C	D
RNP 0.10 DA	316/45 292 (300-7/8)			
RNP 0.30 DA	384/55 360 (400-1)			
AUTHORIZATION REQUIRED				



SW-2, 11 JUL 2024 to 08 AUG 2024

SW-2, 11 JUL 2024 to 08 AUG 2024