

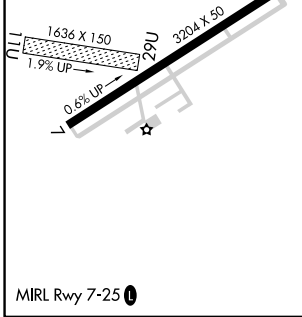
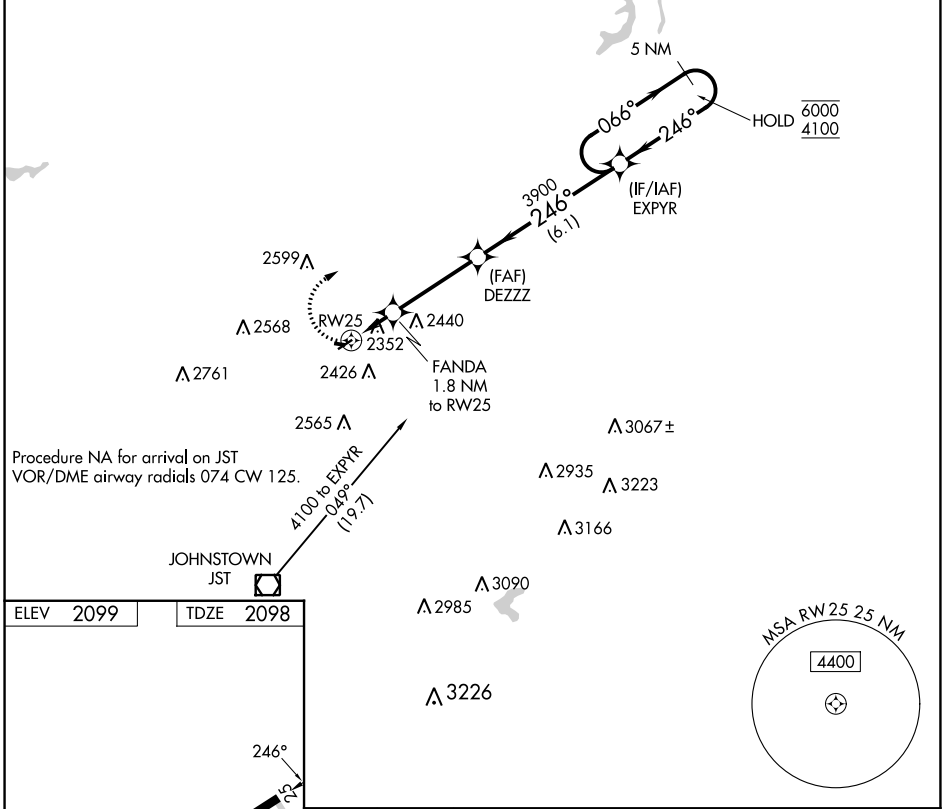
APP CRS	Rwy Idg	3204
246°	TDZE	2098
	Apt Elev	2099

RNAV (GPS) RWY 25

EBENSBURG (9G8)

RNP APCH - GPS.		MISSED APPROACH: Climbing right turn to 4100 direct EXPYR and hold.
<p>Procedure NA at night. Rwy 25 helicopter visibility reduction below 1 SM NA.</p> <p>Obtain local altimeter setting on CTAF; when not received, use Johnstown altimeter setting and increase all MDA 60 feet and visibility Cat C ¼ SM.</p>		

JOHNSTOWN APP CON ★ 121.2 299.2	UNICOM 122.8 (CTAF)
---	-------------------------------



ELEV 2099	TDZE 2098	4100 EXPYR Visual Segment - Obstacles.		5 NM Holding Pattern
		<p>FANDA 1.8 NM to RWY 25</p> <p>DEZZZ 3900</p> <p>EXPYR 4100</p> <p>HOLD 6000/4100</p>		
CATEGORY	A	B	C	D
LNAV MDA	2620-1	522 (600-1)	2620-1½ 522 (600-1½)	NA

NE-4, 11 JUL 2024 to 08 AUG 2024

NE-4, 11 JUL 2024 to 08 AUG 2024