

FORT BELVOIR, VIRGINIA

# ILS or LOC RWY 32

LOC/DME I-DAA <b>108.9</b> Chan <b>26</b>	APCH CRS <b>322°</b>	Rwy Ildg TDZE Arprt Elev <b>4529</b> <b>68</b> <b>74</b>
---	-------------------------	---

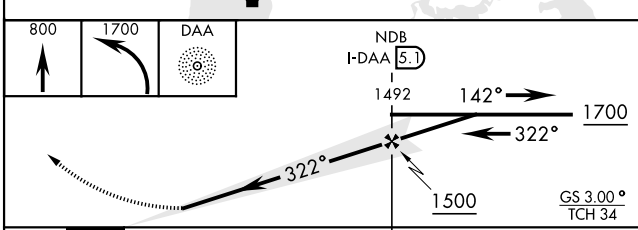
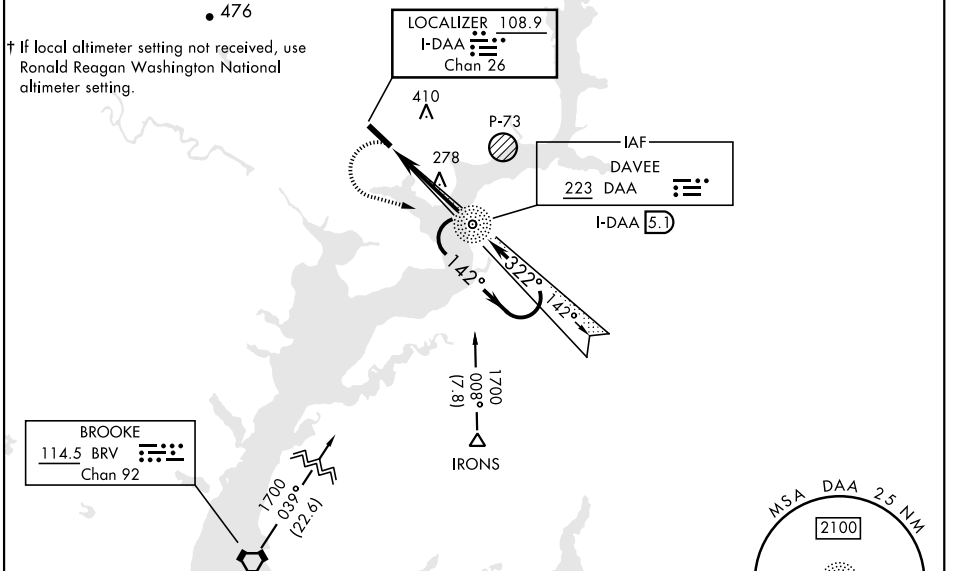
AL-5504 [USA]

DAVISON AAF (KDAV)

ADF required.	MALSF (A4)	MISSED APPROACH: Climb to 800, then climbing left turn to 1700 direct DAA NDB and hold; or when directed by ATC, climb to 800, then climbing left turn to 2000 hdg 190° to 10 NM, expect RADAR vectors.
<p>▼ * When ALS inop, increase CAT D vis to 1½ miles. ** When ALS inop, increase CAT C vis to 1½ miles, CAT D vis to 1¾ miles.</p>		

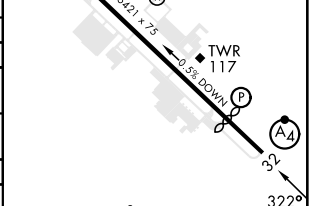
ATIS <b>128.175</b>	POTOMAC APP CON <b>118.95 319.1</b>	TOWER ★ <b>124.275 (CTAF) 0 229.4</b>	GND CON <b>121.9 351.8</b>	CLNC DEL <b>351.8</b>	PAR
------------------------	--	--	-------------------------------	--------------------------	-----

Visibility reduction by helicopters NA.  
Inoperative table does not apply to S-32 CAT A and B.



ELEV 74	TDZE 68
Rwy 14 Ildg 4930' Rwy 32 Ildg 4529'	

CATEGORY	A	B	C	D
S-ILS 32	348/50		280 (300-1)	
S-LOC 32*	540/50	472 (500-1)		540/60 472 (500-1¼)
CIRCLING	740-1	666 (700-1)	740-1¾ 666 (700-1¾)	760-2¼ 686 (700-2¼)
† RONALD REAGAN WASHINGTON NATIONAL ALTIMETER SETTING MINIMUMS				
S-ILS 32	381/50		313 (400-1)	
S-LOC 32**	580/50	512 (600-1)	580/60 512 (600-1¼)	580-1½ 512 (600-1½)
CIRCLING	780-1	706 (800-1)	780-2 706 (800-2)	800-2¼ 726 (800-2¼)



HIRL Rwy 14-32	FAF to MAP 4.3 NM				
Knots	60	90	120	150	180
Min:Sec	4:18	2:52	2:09	1:43	1:26

FORT BELVOIR, VIRGINIA  
Amdt 12C 16JUL20

38°43'N-77°11'W

DAVISON AAF (KDAV)

# ILS or LOC RWY 32

NE-3, 11 JUL 2024 to 08 AUG 2024

NE-3, 11 JUL 2024 to 08 AUG 2024